

D

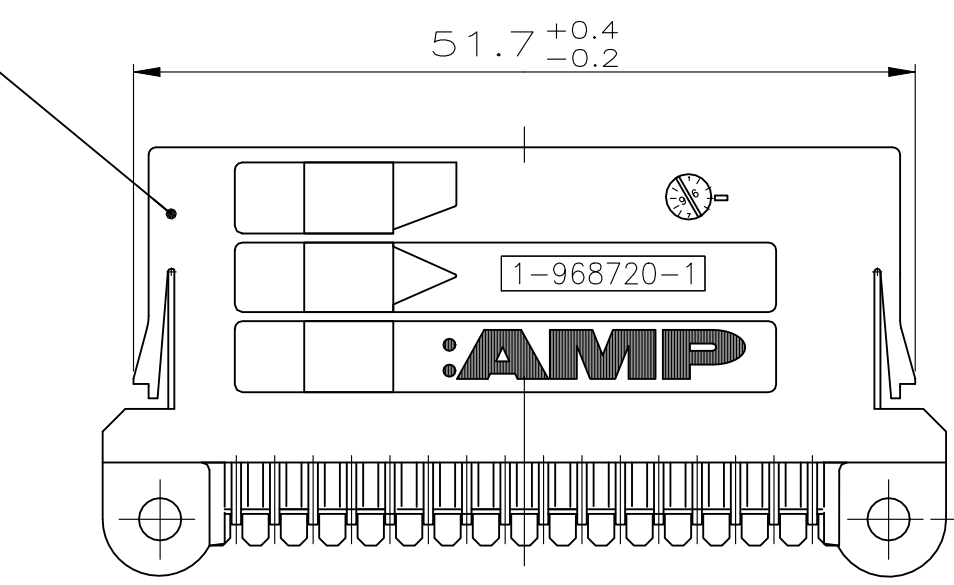
C

B

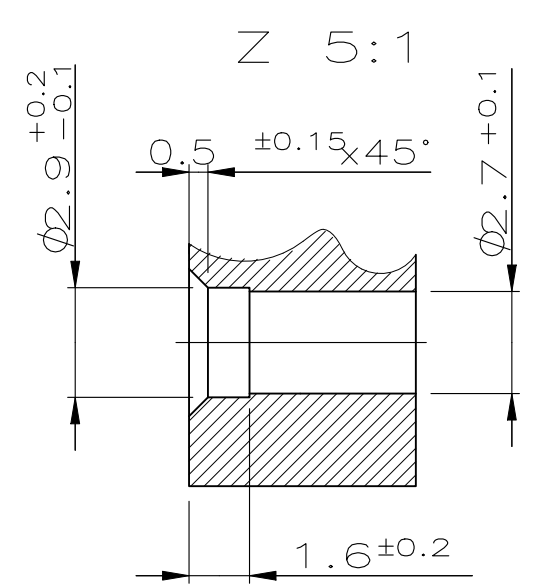
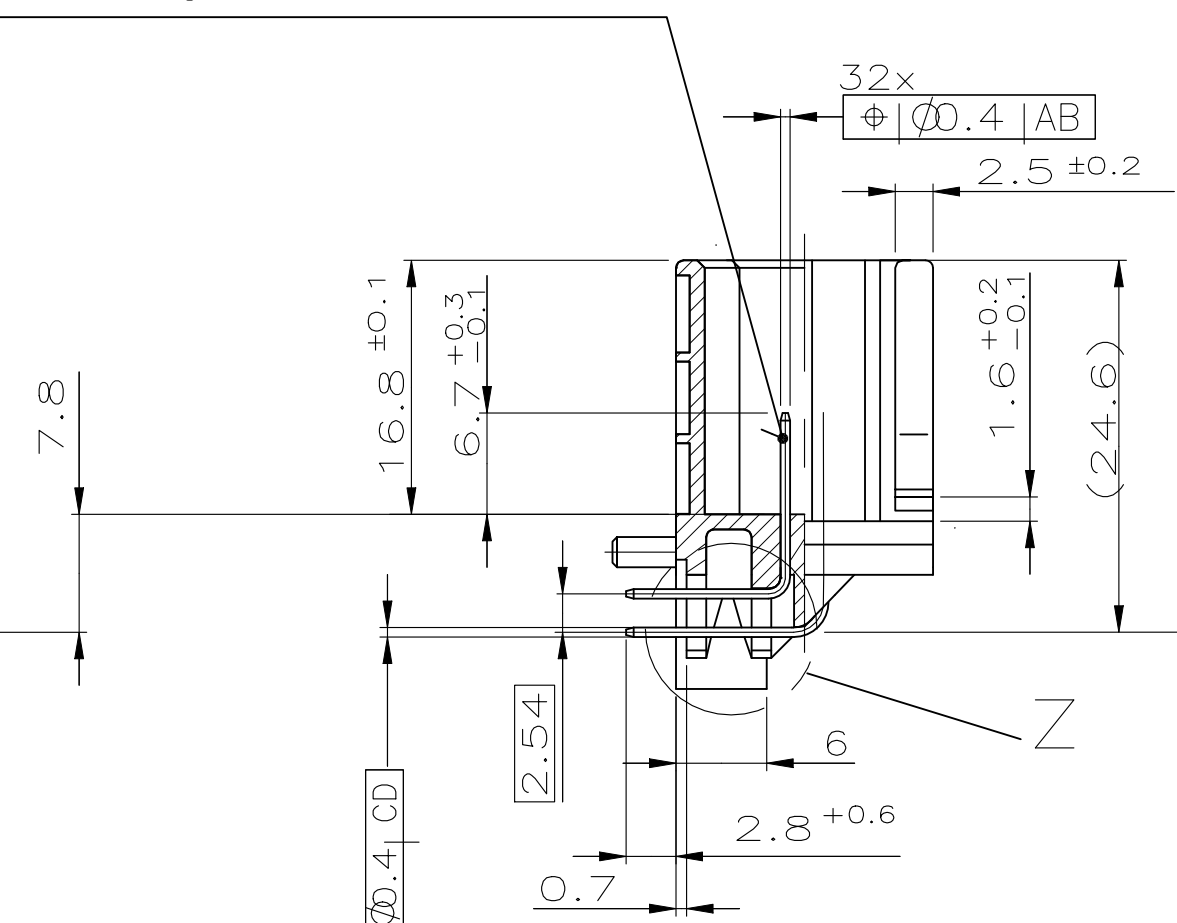
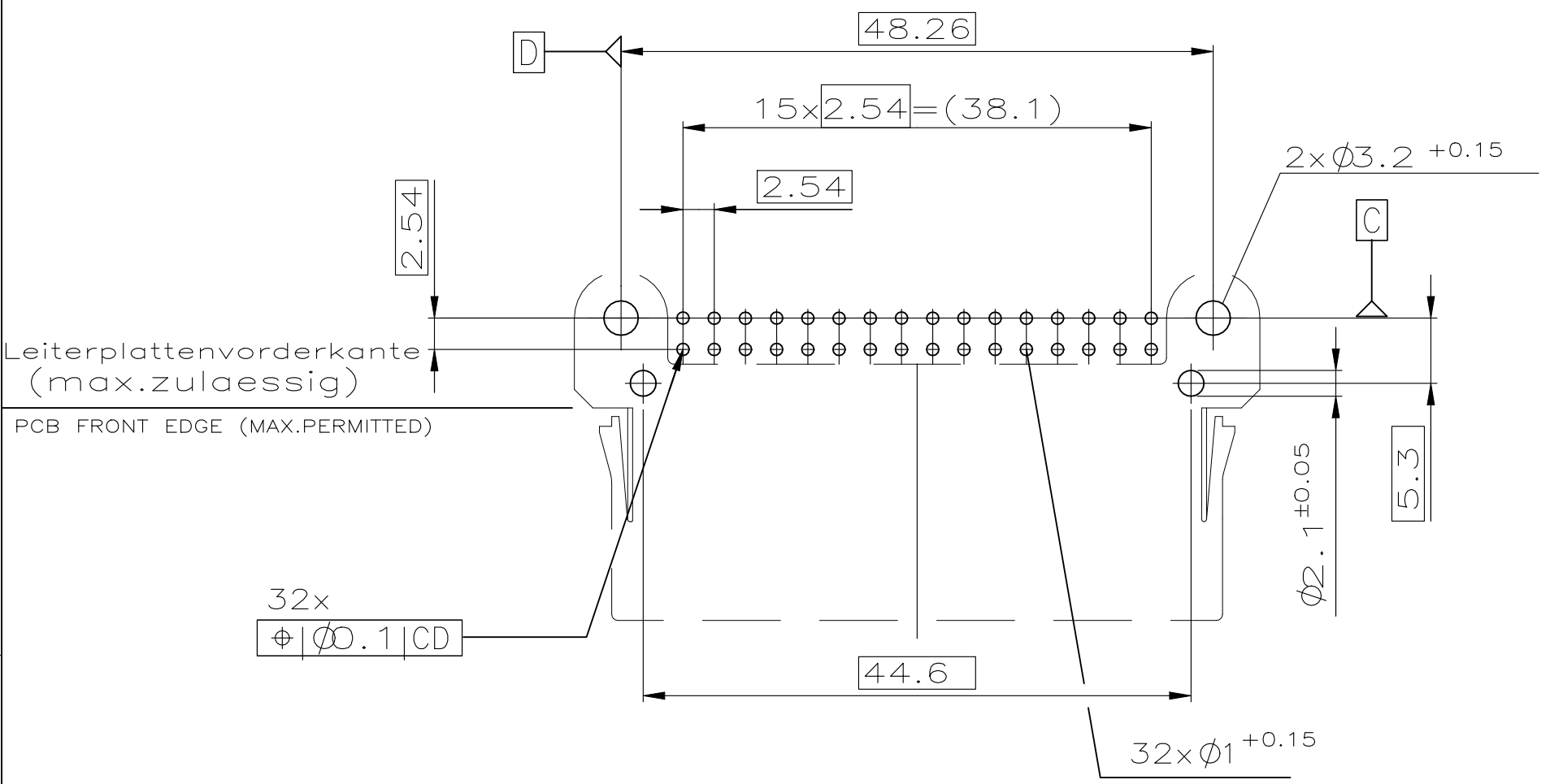
A

Stiftwanne / PIN HEADER  
MATERIAL:  
Werkst.:siehe Tabelle/SEE TABLE  
Farbe/COLOR: siehe Tabelle/SEE TABLE

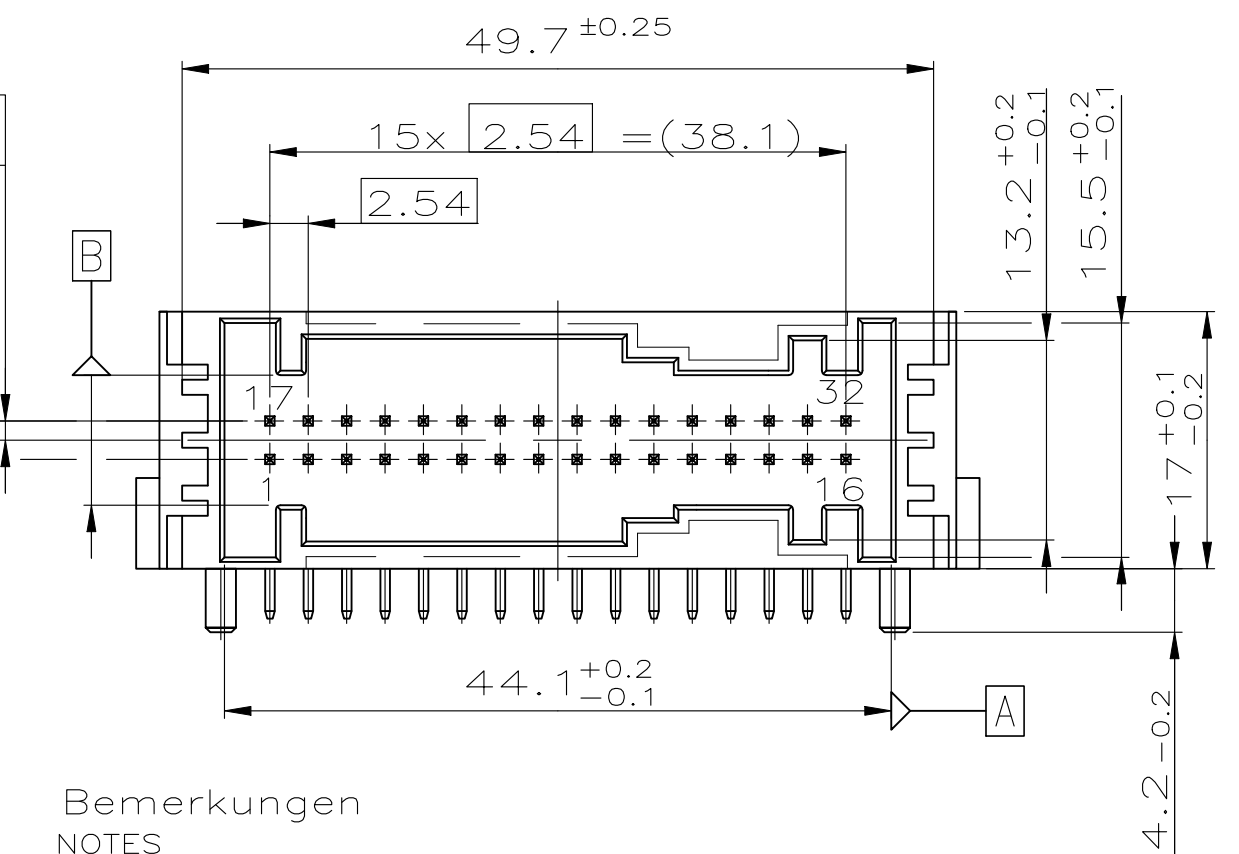
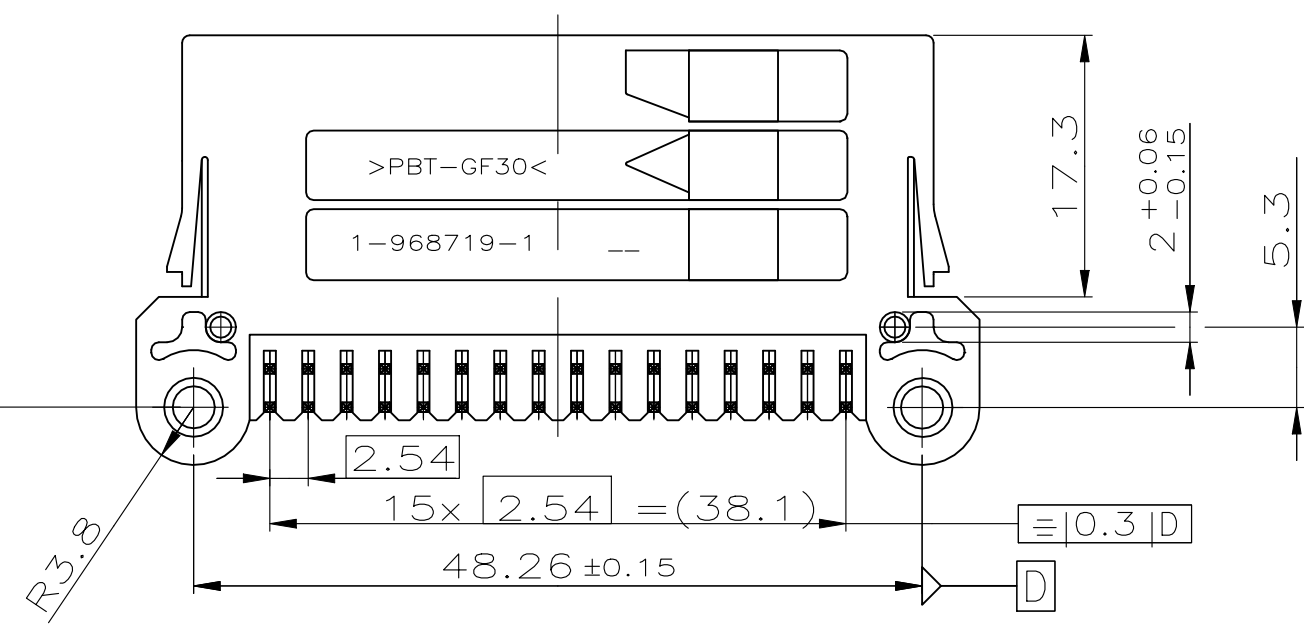
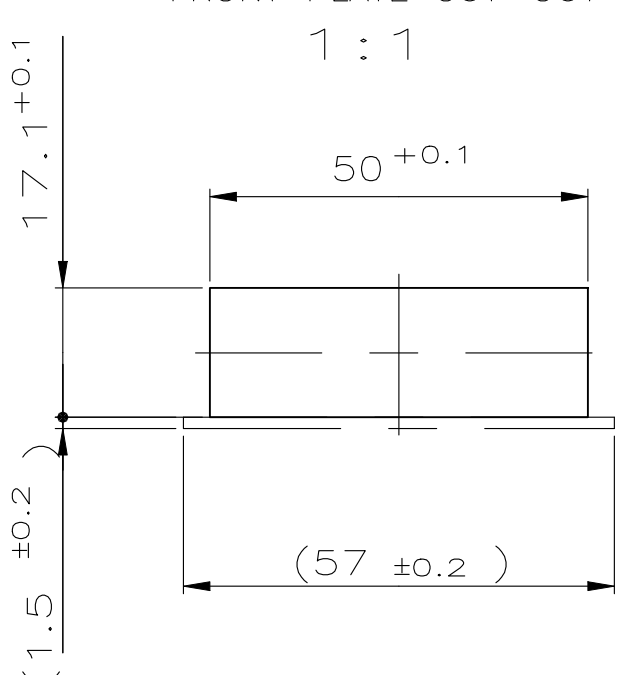
2 Kontaktstift/CONTACT PIN  
siehe Zeichnung AMP 114-18063



Leiterplattenlayout (Bestückungsseite)  
PCB-LAYOUT (MOUNTING SIDE)



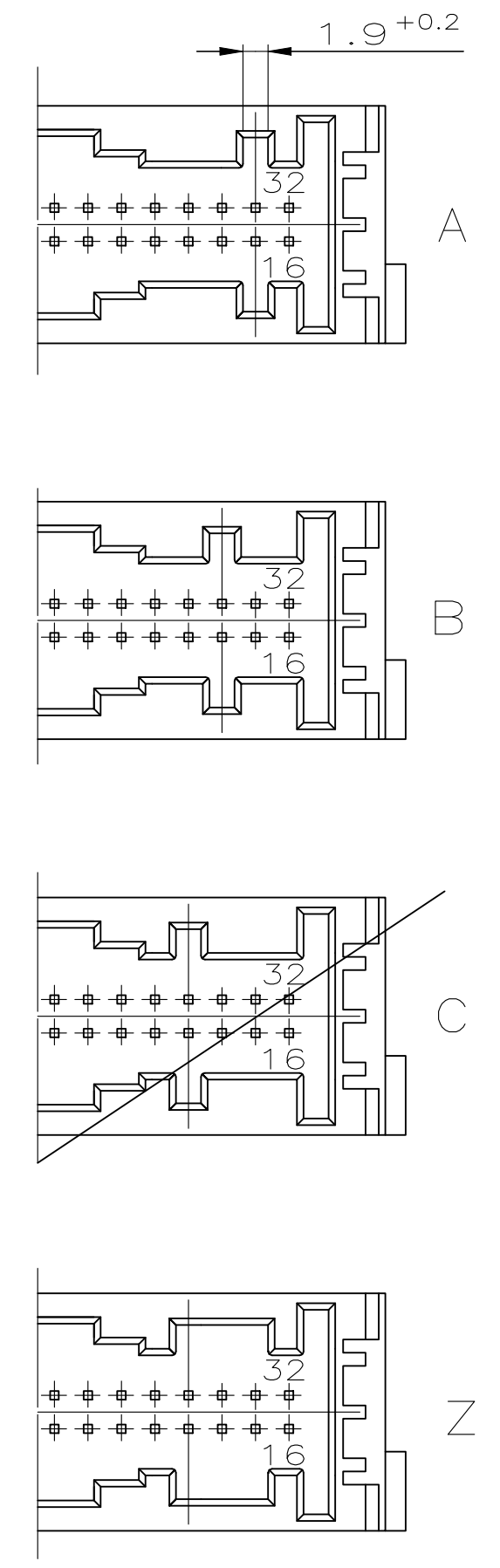
Frontplattenausschnitt  
FRONT PLATE CUT-OUT





Bemerkungen  
NOTES

- Maßgebend ist der deutsche Text  
ONLY THE GERMAN-LANGUAGE VERSION SHALL BE BINDING
- Lötbarkeit gemäß DIN IEC 60068-2-20, Alterung 3  
SOLDERABILITY ACCORDING TO DIN IEC 60068-2-20, AGEING 3
- Kontaktausdrückkraft >25N mit Vorschub 25mm/min  
PRESS OUT FORCE >25N WITH FORCE 25mm/min
- Kodierung A gezeichnet  
CODING A AS SHOWN
- Anwendbar fuer Reflow-Loetprozess  
APPLICABLE FOR REFLOW SOLDERING PROCESS
- Verpackung:Produkttraeger  
PACKAGING:TRAY
- Formteilungsgrat max.0.3 zulaessig  
MOULD BURRS MAX.0.3 PERMITTED
- Einzelheiten der Ausfuehrung bleiben dem Hersteller ueberlassen  
DETAILS OF DESIGN ARE LEFT TO MANUFACTURER

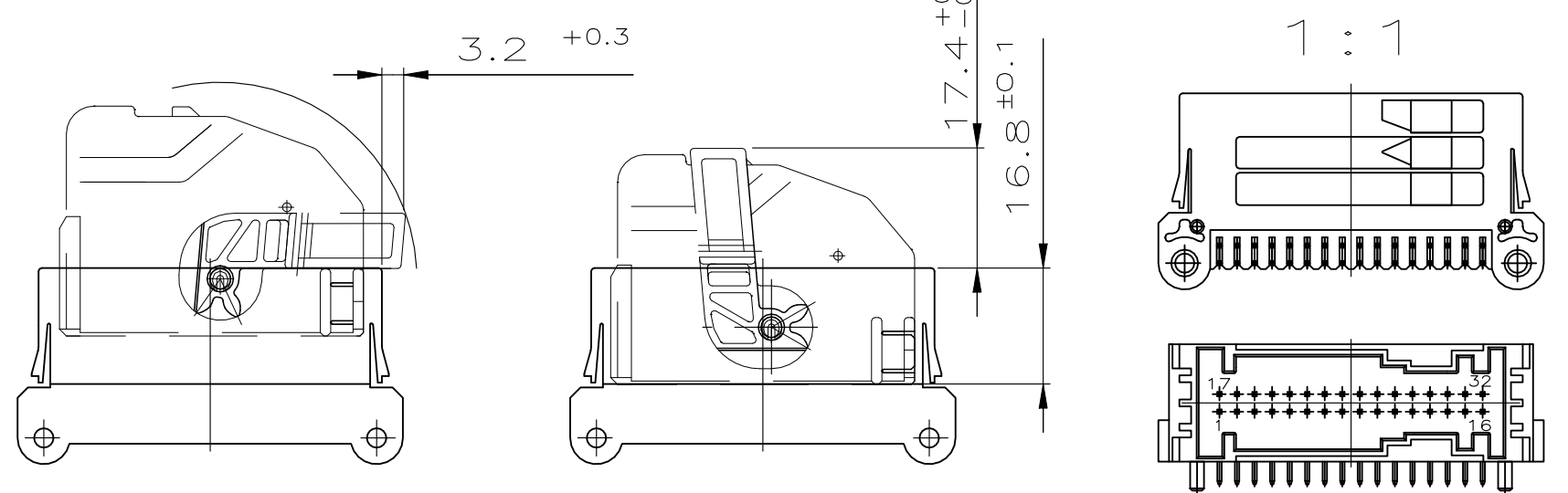
Kodierungen  
CODING



2-968720-4	B	B	Hergestellt aus PN 2-968720-2,verpackt in Verpackungsschale MADE FROM PN.2-968720-2,PACKAGING IN TRAY								
1-968720-4	B	A	Hergestellt aus PN 1-968720-2,verpackt in Verpackungsschale MADE FROM PN.1-968720-2,PACKAGING IN TRAY								
1-968720-3	B	A	Hergestellt aus PN 1-968720-2,verpackt in Verpackungsrohr MADE FROM PN.1-968720-2,PACKAGING IN TUBE								
2-968720-2	B	B	2	Stiftkontakt/PIN CONTACT		TIN PLATING VERZINNT	S	12.4	2-967348-1	0-965612-1	0-965343-1
			1	Stiftwanne/PIN HEADER	SPS-GF20	natur/NATURAL					
1-968720-2	B	A	2	Stiftkontakt/PIN CONTACT		TIN PLATING VERZINNT	S	12.4	1-967348-1	0-965612-1	0-965343-1
			1	Stiftwanne/PIN HEADER	SPS-GF20	schwarz/BLACK					
9-968720-1	B	Z	2	Stiftkontakt/PIN CONTACT		GOLD PLATING vergoldet	S	12.4	9-968775-1	968778-1	-
			1	Stiftwanne/PIN HEADER	PBT-GF30	wasserblau WATER BLUE					
1-968720-1	B	A	2	Stiftkontakt/PIN CONTACT		GOLD PLATING vergoldet	S	12.4	1-968775-1		
			1	Stiftwanne/PIN HEADER	PBT-GF30	schwarz/BLACK					
AMP BESTELL-NR. ORDER NO.	REV.	KOD. COD.	REV.	BENENNUNG DESCRIPTION	Werkstoff MATERIAL	OBERFLÄCHE FARBE SURFACE/COLOUR	ART KIND	GRAMM GEWICHT	PASSEND ZU: Abdeckkappe SUITABLE FOR: SHIELD	DAZU GEHÖRT: Buchsengehäuse USED WITH: SOCKET HOUSING	DAZU GEHÖRT: Decke USED WITH: LEVEL

Freiraum für Hebel  
in Vorraststellung  
an Stiftwanne  
FREE AREA FOR LEVER  
IN PRELOCKED POSITION  
AT PIN HEADER

Freiraum für Hebel  
in Endraststellung  
an Stiftwanne  
FREE AREA FOR LEVER  
IN ENDOCKED POSITION  
AT PIN HEADER



THIS DRAWING IS A CONTROLLED DOCUMENT.		DWN C.Beul CHK T.Stieler APVD	10-AUG-00 10-AUG-00 -	TE Connectivity	
DIMENSIONS: mm	TOLERANCES UNLESS OTHERWISE SPECIFIED: ALL DIMENSIONS IN MILLIMETERS 1. DIM 16901 - 140 0.1 1. PLC ± - 2. PLC ± - 3. PLC ± - 4. PLC ± - ANGLES/WINKEL - ± -	PRODUCT SPEC 108-18214	NAME	MOS,PIN HEADER,32 POS. MOS,Stiftwanne,32-polig	
MATERIAL	FINISH	WEIGHT 12.4g	SIZE A1	CAGE CODE 00779	DRAWING NO. 968720
CUSTOMER DRAWING		SCALE 2:1	SHEET 1 of 1	REV B3	RESTRICTED TO

# Mouser Electronics

Authorized Distributor

Click to View Pricing, Inventory, Delivery & Lifecycle Information:

[TE Connectivity:](#)

[1-968720-2](#)