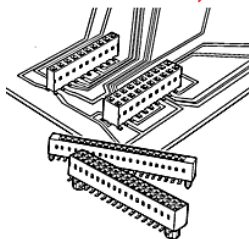


89898-309LF - DUBOX™ : 18
Position Vertical Card
Connector, Surface Mount,
Double row, Dual entry



www.fci.com

Mating Half

➤ 77313-101-18LF

➤ 95278-101-18LF

Specifications

General

Hold Down Style	No Locating Pegs
Number of contacts (per row)	9
Number of contacts (Total)	18
Number of rows	2
Orientation	Vertical
Packaging	Tube
Mating half	Mates with 0.64 mm (0.025 in.) Square pins.
Series Number	89898

Dimensional

Thickness (Board)	1.6 mm (0.062 in.) or 2.36 mm (0.093 in.)
Footprint (Board)	2.54 mm x 7.2 mm (0.1 in. x 0.283 in.)

Electrical

Current rating	3A max. per Contact/2A max. per Contact for Full Load
Resistance (Contact)	15 milli ohms Initial, 20 milli ohms After test
Resistance (Insulation)	100000 M-ohms
Voltage rating	1000V rms

Mechanical

Insertion force	1.50N (150 gf) per Contact
Withdrawal Force	0.3N (30 gf) min. per Contact

Mounting

Solder process	Compatible with Wave, Vapor - Phase
----------------	-------------------------------------

Physical

Color (Housing)	Grey
Material (Contact)	Phosphor Bronze
Material (Housing)	High Temperature Thermoplastic
Plating (Contact area)	0.76 µm (30 µin.) Gold
Plating (Tail)	2.54 µm (100 µin.) Tin
Underplating (Contact)	1.27 µm (50 µin.) Nickel
Flammability rating	UL 94 V-0

Temperature (Range)	-65 °C to +125 °C
Approvals / Certifications	
UL File Number	E66906
Approvals / Certifications	UL and CSA Approved

PRODUCT NUMBER

89898-YYYZHFLF

WHEN NEEDED, SUFFIX LETTER "LF" INDICATES THE PRODUCT IS RoHS COMPATIBLE, SEE NOTE 6

OPTION LETTERS, NOTE 1b, OMIT FROM PRODUCT NUMBER IF NOT APPLICABLE

A - PRODUCT WITH PICK UP CAP IN TAPE & REEL, SEE TA856.

B - PRODUCT WITH PICK UP CAP PACKED IN TUBE.

K - PRODUCT WITHOUT PICK UP CAP IN TAPE & REEL.

NUMBER OF POSITIONS PER ROW: 02 TO 30.
OVER THAN 30 POSITIONS ON SPECIAL REQUEST.

PLATING CODE

3= 0.76µm GOLD ON CONTACT AREA.

3.81µm TIN-LEAD ON TAIL.

4= 5µm TIN-LEAD ON CONTACT AREA.

3.81µm TIN-LEAD ON TAIL.

WHEN SUFFIX "LF" IS REQUIRED, 2µm MIN MATTE TIN OVER 1.27 MIN Ni IS SUPPLIED INSTEAD OF SnPb.

NOTES:

1a- HOUSING & PICK UP CAP MAT'L: THERMOPLASTIC GLASS FILLED FLAME RETARDANT PER UL 94 V-O COLOR: GREY.

b- HIGH TEMPERATURE PLASTIC 30% GLASS REINFORCED NON HALOGEN FLAME RETARDED MOLDING COMPOUND COLOR BLACK.

2 - TERMINAL MATERIAL: PHOSPHOR BRONZE.

3 - PACKAGING:

2 UP TO 4 POSITIONS PRODUCT PACKED IN PLASTIC BOX.

5 UP TO 30 POSITIONS PRODUCT PACKED IN TUBE.

WHOLE 89898-304B PACKED IN TUBE.

4 - TO DETERMINE DIMENSIONS:

N = NUMBER OF POSITIONS PER ROW

EXAMPLE: 8 POS: (N×2.54)-0.08=20.24 mm.

5 - RECOMMENDED IR PROFILE PER TA842.

6 - RoHS COMPATIBLE PRODUCT SPECIFICATIONS

a - PLATING:

- "LF" MEANS THE PRODUCT IS LEAD-FREE,
2µm MINIMUM MATTE TIN OVER 1.27µm
MINIMUM NICKEL UNDERPLATE.

b - MANUFACTURING PROCESS COMPATIBILITY

- THE HOUSING WILL WITHSTAND EXPOSURE TO 260°C PEAK TEMPERATURE FOR 30 SECONDS MAX IN A CONVECTION INFRA-RED OR VAPOR PHASE OR REFLOW OVEN.

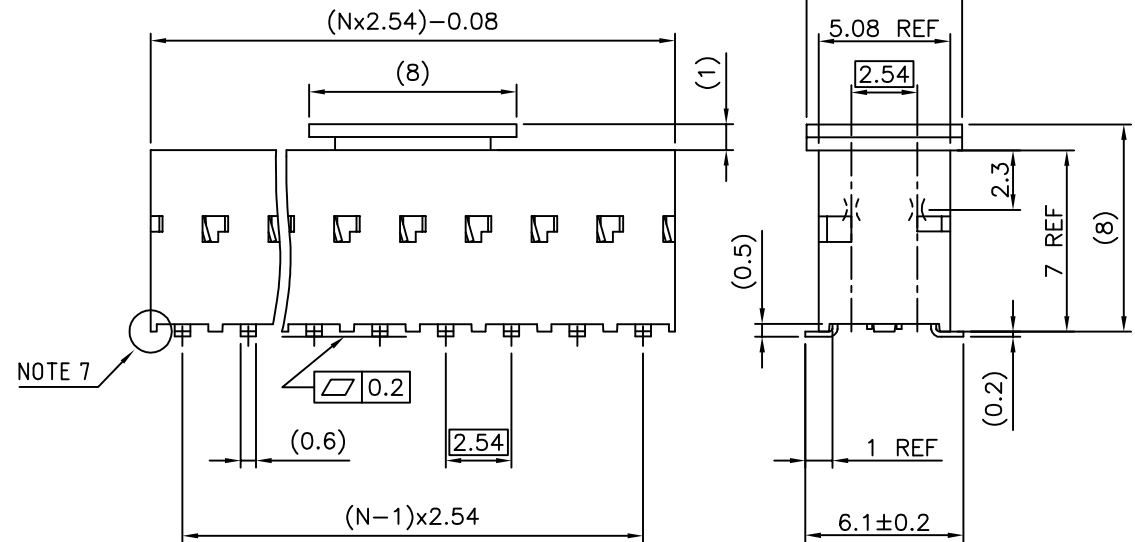
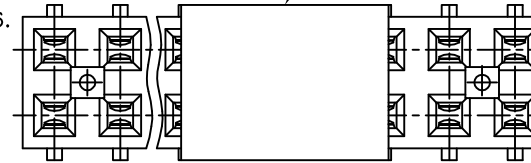
c - LABELING:

- MEETS PACKAGING SPECS AS PER GS-14-920

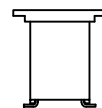
d - LEGAL STATEMENT: SEE GS-22-008

7 - END STAND-OFFS FOR 2x2 UP TO 2x5 POS
NO END STAND-OFFS FOR 2x6 UP TO 2x50 POS

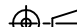

OPTIONAL PICK UP CAP



NOTE 7



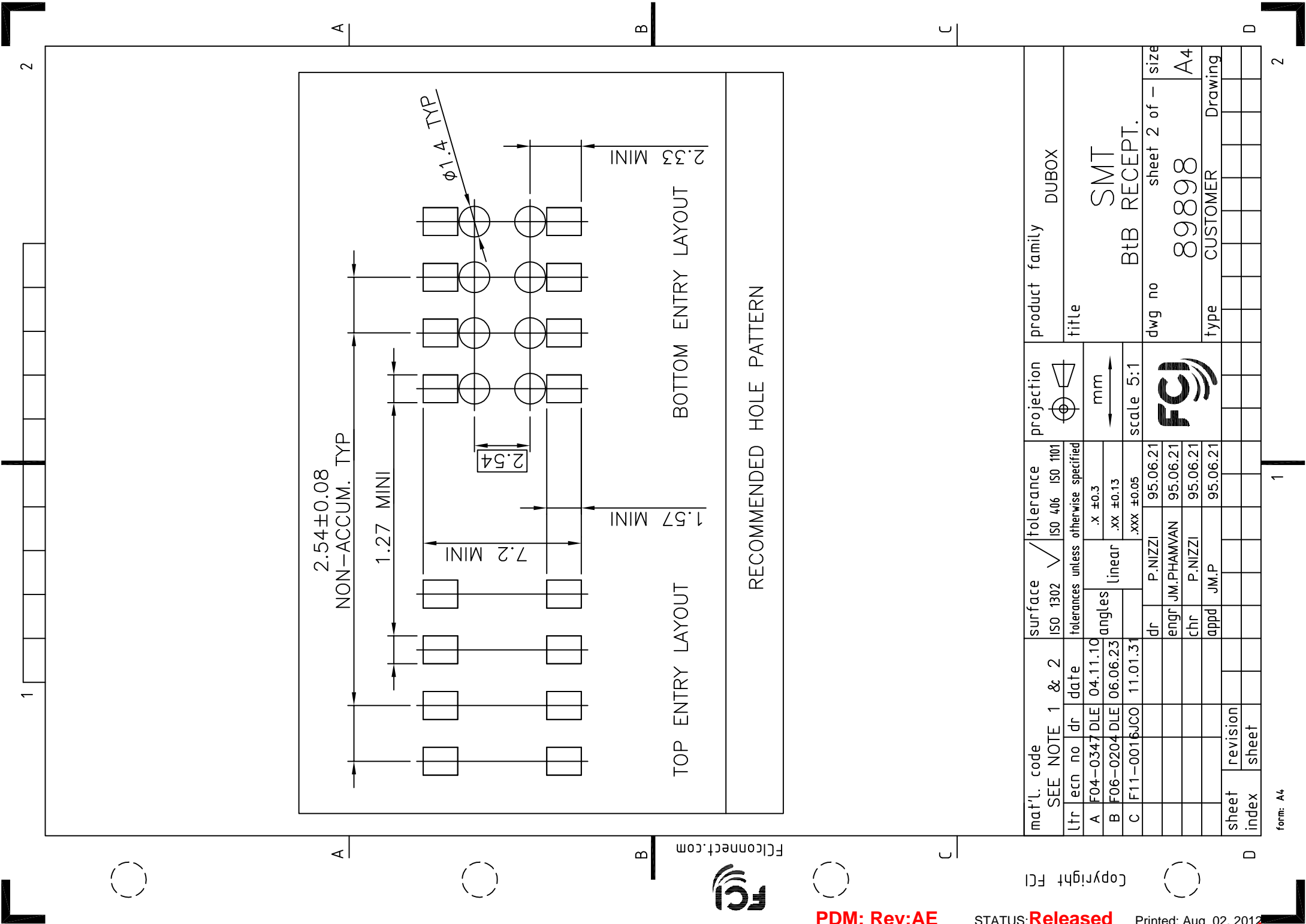
CAP ORIENTATION FOR
2x2 POSITIONS ONLY

mat'l. code SEE NOTE 1 & 2					surface ISO 1302 ✓		tolerance ISO 406 ISO 1101		projection 		product family DUBOX				
lfr ecn no dr date					tolerances unless otherwise specified					title					
AE F12-0047 JCO 12.07.16					angles linear		.X ±0.3				SMT BtB RECEPT.				
							.XX ±0.13								
							.XXX ±0.05								
Y F06-0137 DLE 06.02.27							.XXX ±0.05		scale 5:1						
AA F06-0204 DLE 06.06.23					dr		P.NIZZI		95.06.21		dwg no sheet 1 of 2 size 89898 A3				
AB F09-0210 JCO 09.10.27					enfr		JM.PHAMVAN		95.06.21						
AC F11-0016 JCO 11.01.31					chr		P.NIZZI		95.06.21						
AD F11-0043 JCO 12.02.22					appd		JM.P		95.06.21		type CUSTOMER Drawing				
sheet		revision		AD		C									
index		sheet		1		2									

PDM: Rev:AE

STATUS:Released

Printed: Aug 02, 2012



1

2

1

2

Fciconnect.com



PDM: Rev:AE

STATUS: Released

Printed: Aug 02, 2012

Copyright FCI

sheet index revision sheet

mat'l. code	SEE NOTE 1 & 2	surface	ISO 1302	tolerance	ISO 406	ISO 1101
ltr	ecn no	ldr	date	date	date	date
A	F04-0347	DLE	04.11.10	04.11.10	04.11.10	04.11.10
B	F06-0204	DLE	06.06.23	06.06.23	06.06.23	06.06.23
C	F11-0016	UCO	11.01.31	11.01.31	11.01.31	11.01.31
		dr	P.NIZZI	95.06.21	95.06.21	95.06.21
		enr	JM.PHAMVAN	95.06.21	95.06.21	95.06.21
		chr	P.NIZZI	95.06.21	95.06.21	95.06.21
		appd	JM.P	95.06.21	95.06.21	95.06.21
sheet	revision					
index	sheet					

projection	
mm	
scale	5:1
FCI	

product family	DUBOX
title	SMT
dwg no	89898
type	CUSTOMER
sheet 2 of 2	A4
Drawing	

form: A4

1

2