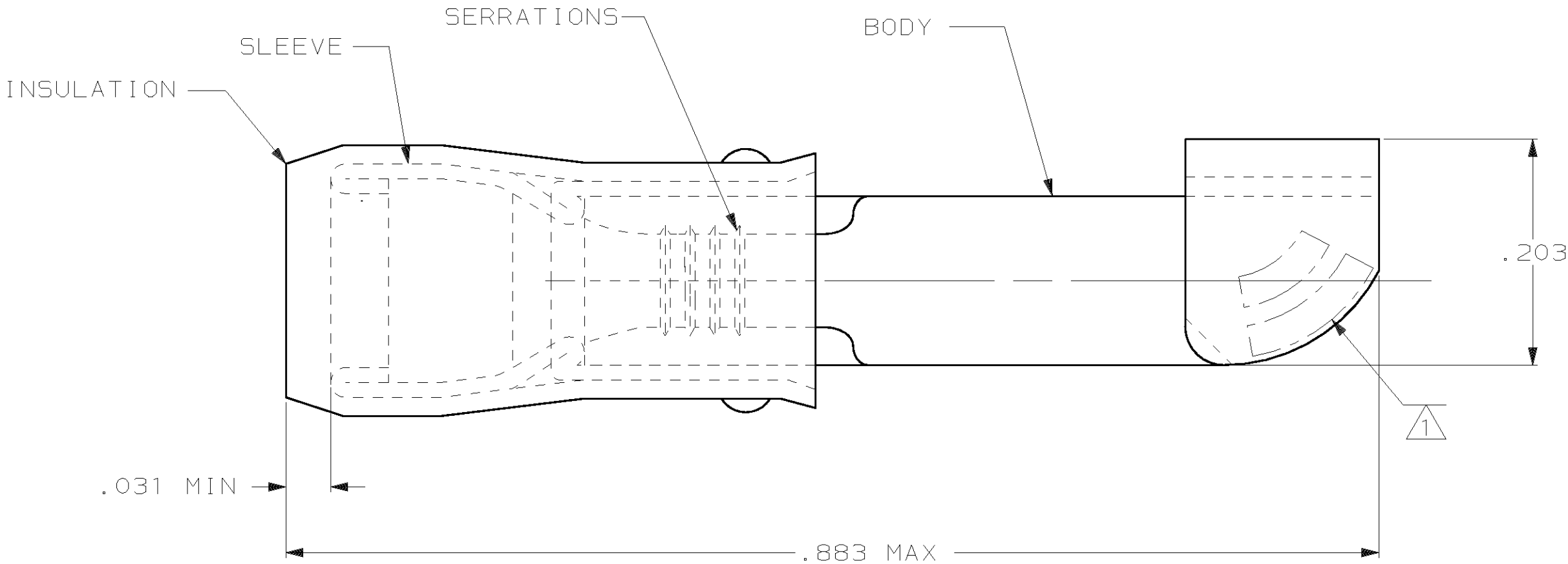


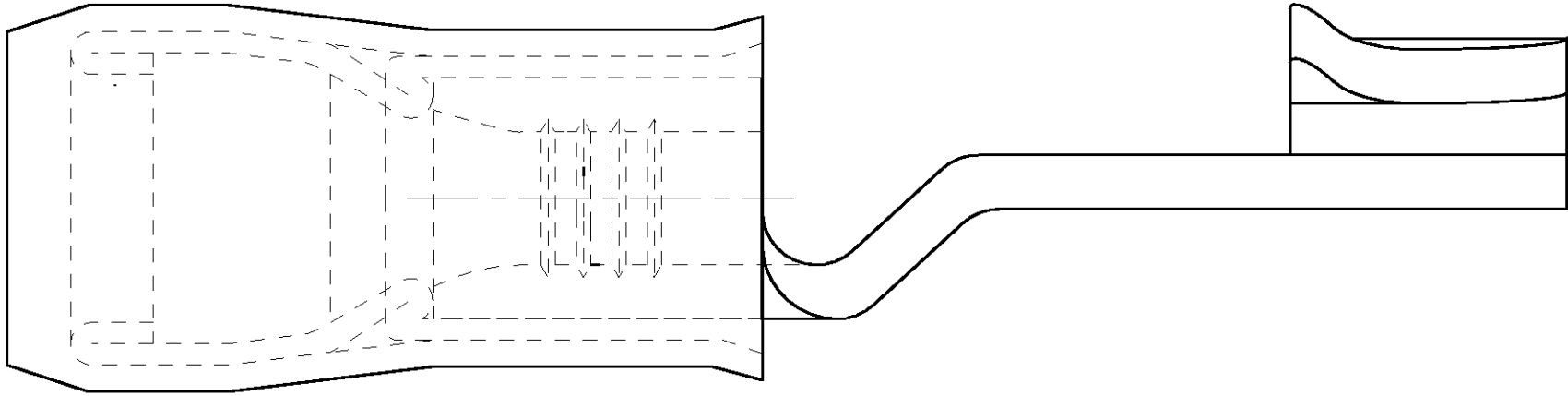
| LOC | DIST | P | F | REVISIONS |     |                      |         |       |
|-----|------|---|---|-----------|-----|----------------------|---------|-------|
|     |      |   |   | ZONE      | LTR | DESCRIPTION          | DATE    | APPD  |
| G   | 14   |   |   |           | A   | REL PER 0G3A-0221-02 | 02MAY02 | JR/TM |



**AMP**  
WIRE RANGE

22-16 AWG  
SOLID OR STRANDED

- 1 MARKED "AMP 22-18\*" FOR MILITARY COMMERCIAL RANGE IS 22-16
- 2 DESIGNED FOR WIRE INSULATION DIA .080-.125
- 3 TONGUE MATERIAL THK .033 MAX.
- 4 PREPRODUCTION - FASR REQ



AMP INCORPORATED  
CUSTOMER SERVICE SYSTEMS

|   |  |
|---|--|
| FOR ADDITIONAL<br>PRODUCT INFORMATION OR<br>COPIES OF DRAWINGS<br>AND TECHNICAL DOCUMENTS | PRODUCT INFORMATION CENTER<br>1-800-522-6752 |
| FOR APPLICATION<br>TOOLING INFORMATION  | TOOLING ASSISTANCE CENTER<br>1-800-722-1111  |
| FOR ORDER ENTRY   | 1-800-526-5142                               |

MAX RECOMMENDED OPERATING  
TEMPERATURE:  
105°C [221°F]

VOLTAGE RATING:  
300V MAX

WIRE CROSS SECTIONAL AREA RANGE:  
0.26-1.65mm<sup>2</sup> [509-3,260] CIR MILS  
SOLID OR STRANDED

THIS DRAWING IS A CONTROLLED DOCUMENT FOR  
AMP INCORPORATED. IT IS SUBJECT TO CHANGE  
AND THE CONTROLLING ENGINEERING ORGANIZATION  
SHOULD BE CONTACTED FOR THE LATEST REVISION.

DO NOT SCALE PRINT.  
UNLESS SPECIFIED  
DIMENSIONS IN mm [INCHES]  
TOLERANCES ON :  
2 PLC DEC ± -  
3 PLC DEC ± .008  
ANGLES ± -

MATERIAL  
COPPER ASTM B-152  
SLEEVE, RED NYLON

FINISH  
NICKEL PL PER  
ASTM B162

|                               |            |
|-------------------------------|------------|
| DR 04APR02<br>JR RUTH         | NAME       |
| CHK 04APR02<br>T MICHIELLUTI  |            |
| APPD 04APR02<br>T MICHIELLUTI | SIZE       |
| APPD 04APR02<br>T MICHIELLUTI |            |
| PRODUCT SPEC<br>-             | CAGE CODE  |
| APPLICATION SPEC<br>-         | DRAWING NO |
| WEIGHT<br>-                   | SCALE 10:1 |

**AMP** AMP Incorporated  
Harrisburg, PA 17105-3608

TERMINAL, PIDG™,  
KNIFE DISCONNECT,  
WIRE SIZE: 22-16 AWG

|        |        |
|--------|--------|
| 00779  | 696451 |
| 1 OF 1 |        |

# Mouser Electronics

Authorized Distributor

Click to View Pricing, Inventory, Delivery & Lifecycle Information:

[TE Connectivity:](#)

[696451-1](#)