

REVISIONS					
P	LTR	DESCRIPTION	DATE	DWN	APVD
	E	FREE STATE DIMENSION UPDATED	01JUL2019	MB	PKS

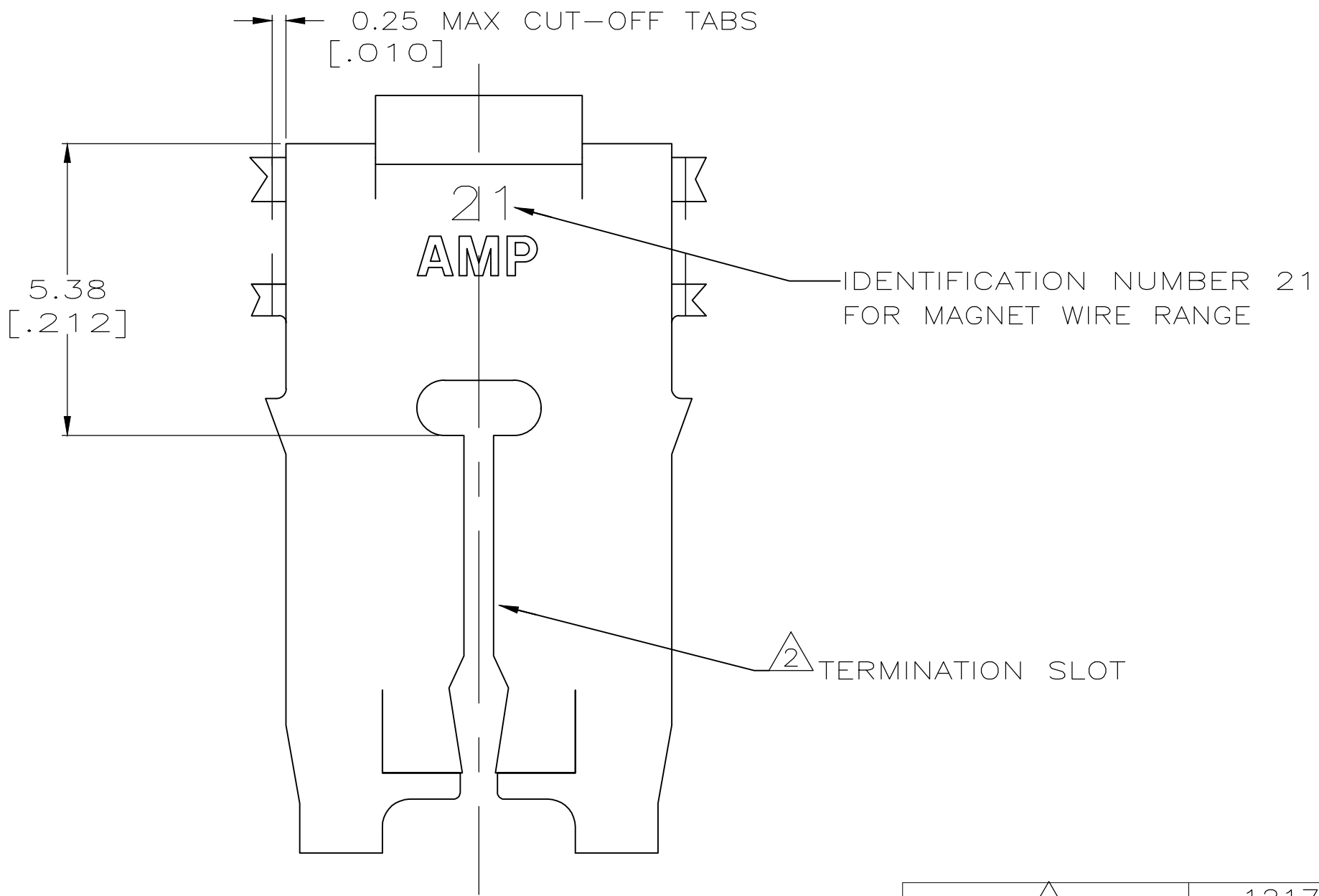
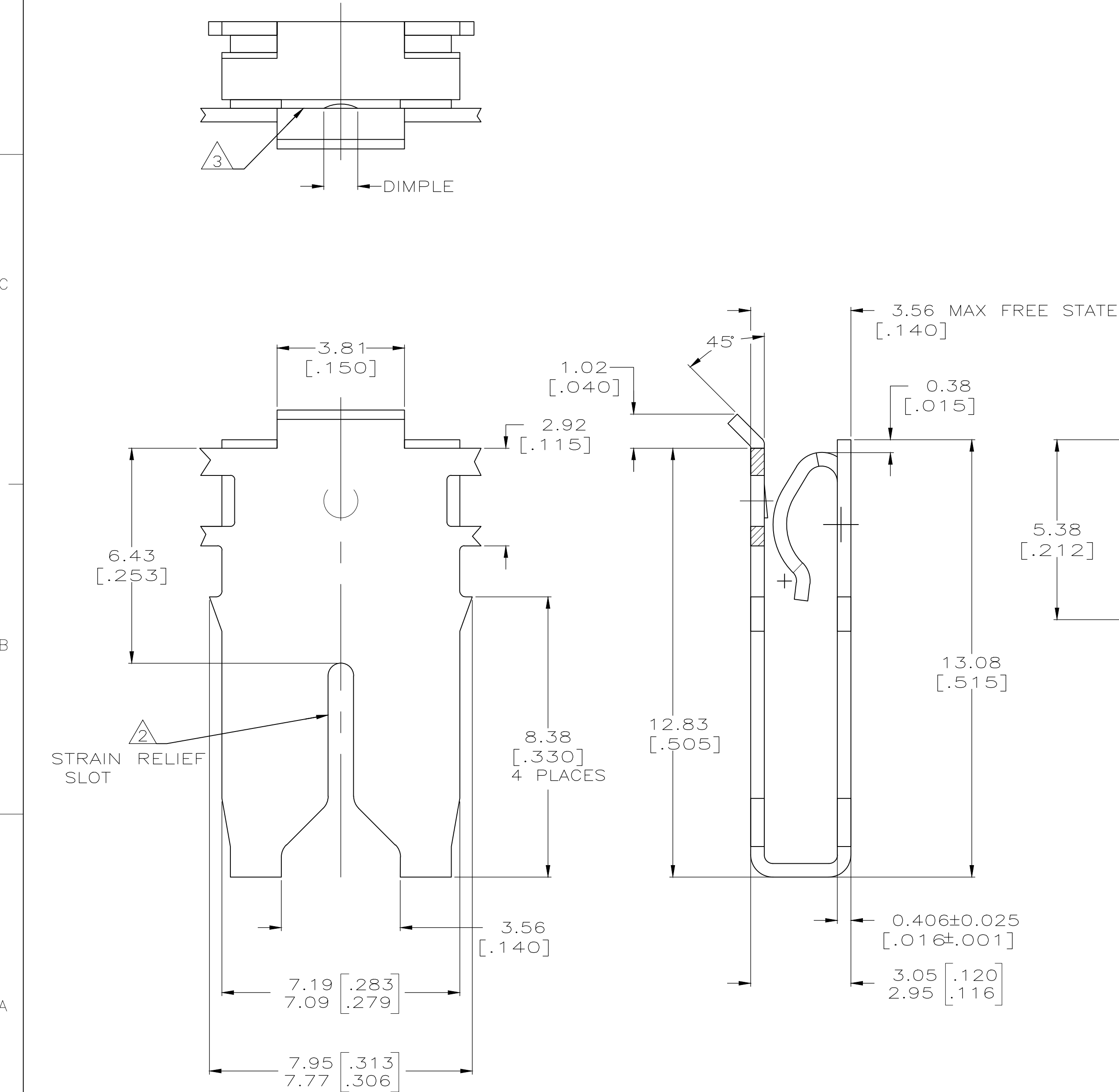
- 1 CONTINUOUS STRIP ON REELS WITH TERMINALS  
LOCATED ON 10.41±0.08[.410±.003] CENTERS.
- 2 SLOT ACCEPTS 0.72–0.86mm [#21–#19.5] AWG COPPER MAGNET WIRE.  
2 WIRES OF THE SAME SIZE MAX PER SLOT.
- 3 CONTACT LEAF ACCEPTS 0.81[.032] THICK POKE-IN TAB,  
(REFERENCE TAB DRAWING 1217324–1).
- 4 TIN PLATE OVER NICKEL UNDERPLATE.
- 5 TIN PLATE.

D

C

B

A



THIS DRAWING IS A CONTROLLED DOCUMENT.		DWN MICHAEL S. FEHER 12FEB2007	<div><div>TE</div>TE Connectivity</div> <div>SPECIAL LEAF CONTACT, 500 SERIES MAG-MATE</div>		
DIMENSIONS: mm[INCHES]		CHK KURT A. RANDOLPH 12FEB2007			
TOLERANCES UNLESS OTHERWISE SPECIFIED:		APVD KURT A. RANDOLPH 12FEB2007			
0 PLC ± - 1 PLC ± - 2 PLC ± 0.25[.010] 3 PLC ± - 4 PLC ± - ANGLES ± -		PRODUCT SPEC 108-2053 APPLICATION SPEC 114-2066			
MATERIAL BRASS		FINISH -	WEIGHT	SIZE A2	CAGE CODE 00779
			CUSTOMER DRAWING	DRAWING NO C=1217357	RESTRICTED TO -
			SCALE 10:1	SHEET 1 OF 1	REV E

# Mouser Electronics

Authorized Distributor

Click to View Pricing, Inventory, Delivery & Lifecycle Information:

[TE Connectivity:](#)

[1217357-1](#)