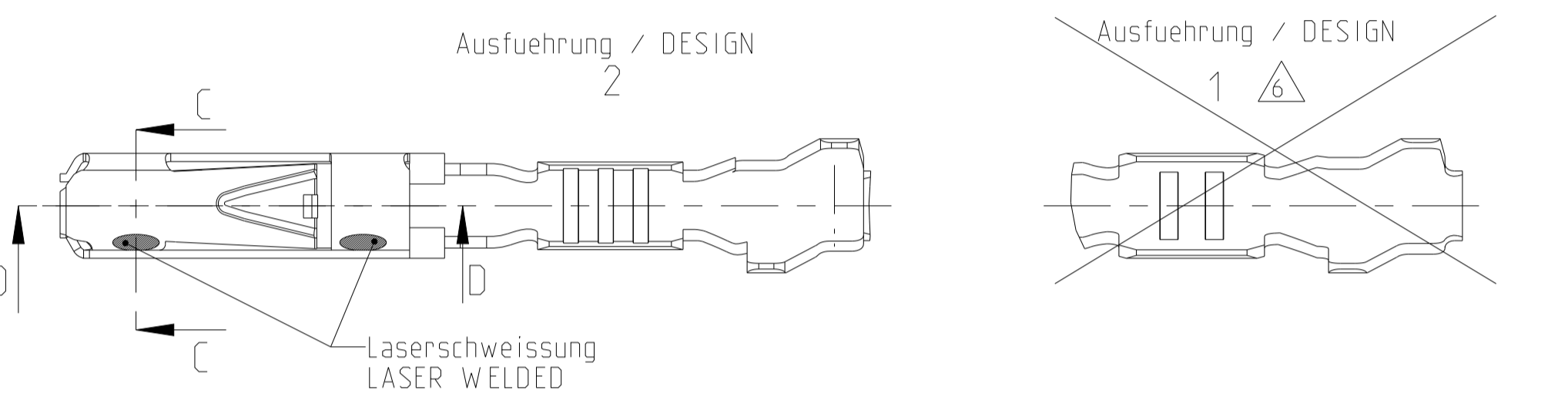
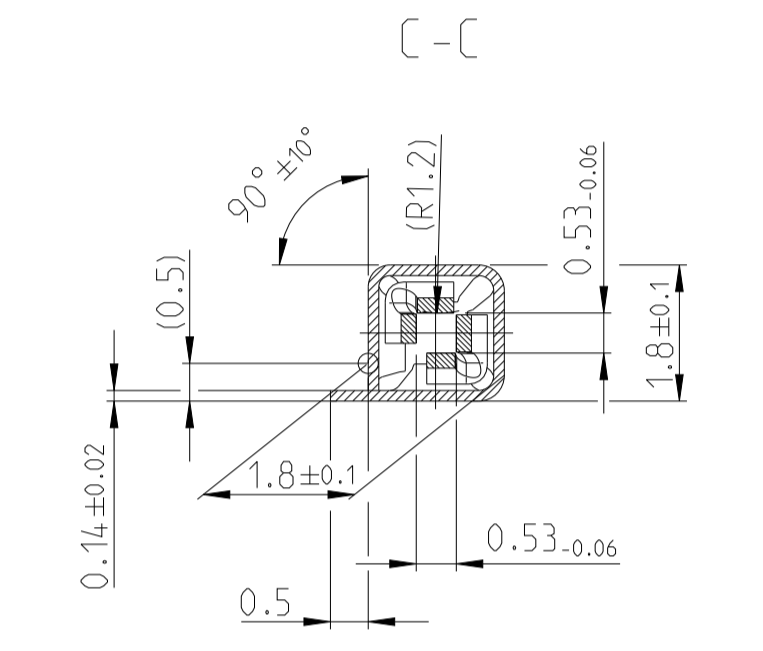
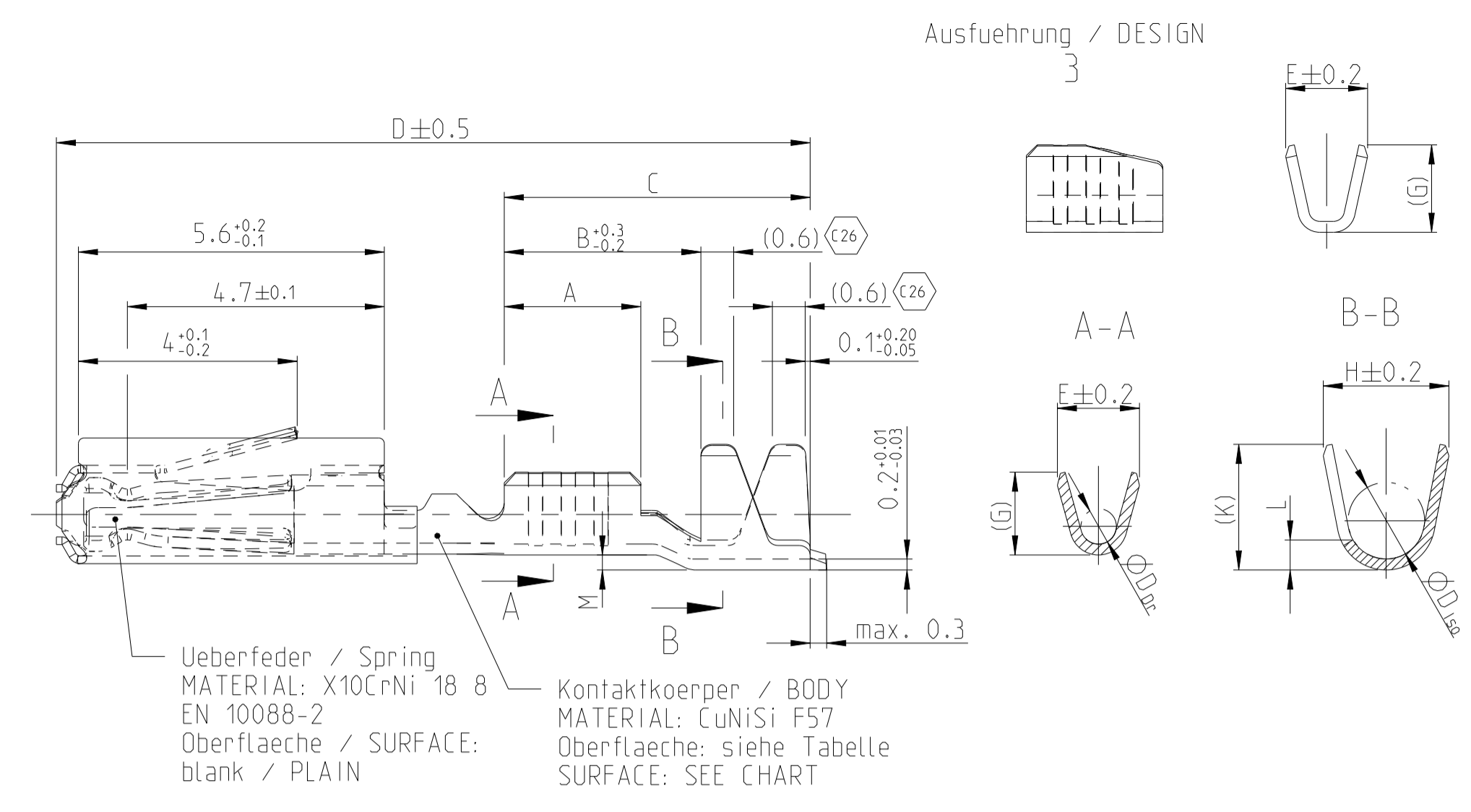
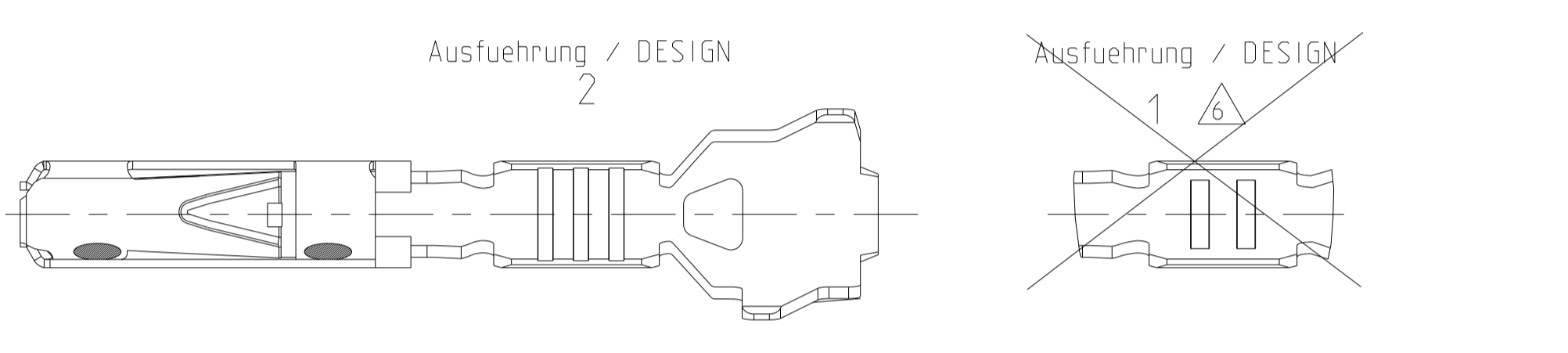
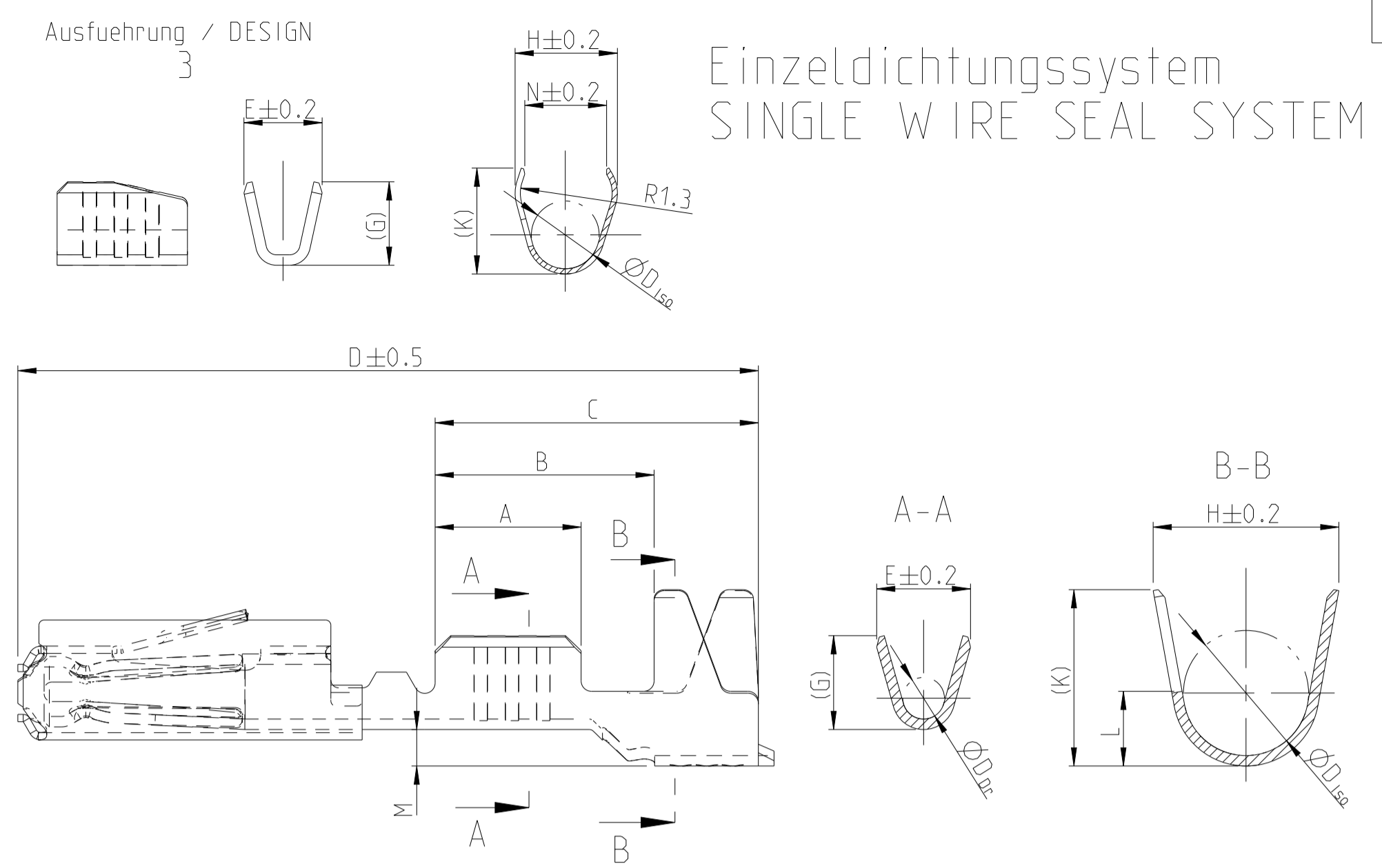


# Normale Anwendung USUAL APPLICATION

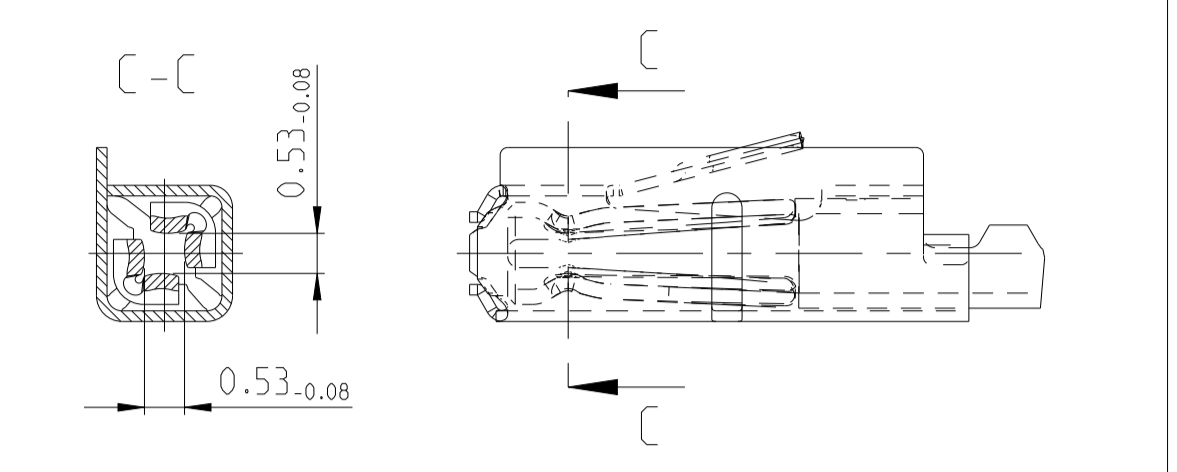


# Ausfuehrung / DESIGN 3 Einzeldichtungssystem SINGLE WIRE SEAL SYSTEM

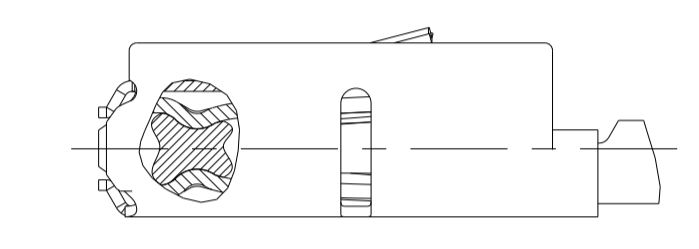


LOC	DIST	REV	DATE	BY	APPV
A1	-	-	-	-	-
C23			30APR2019	FRAN BERG	
C24			09DEC2019	MAH. BERG	
C25			28AUG2020	MAH. BERG	
C26			20AUG2021	FRAN BERG	

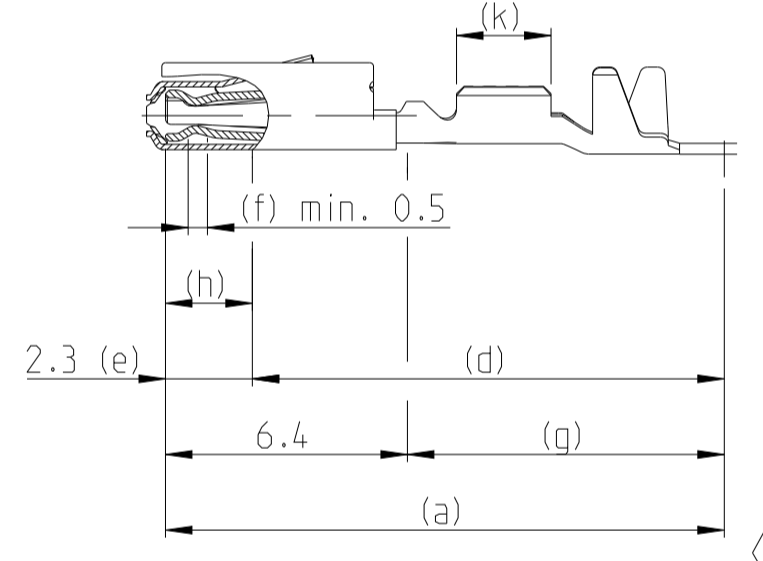
# versilberte/vergoldete Ausfuehrung SILVER/GOLD VERSION



# GEL VERSION



# Oberflaeche / FINISH



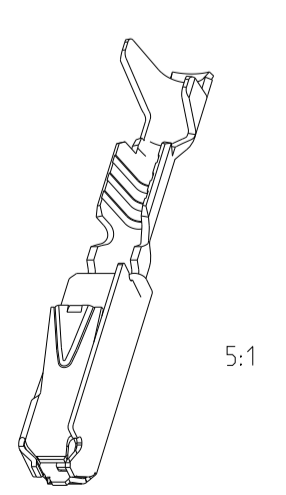
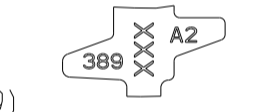
Sn: verzinnete Ausfuehrung  
TINNED  
(a) Kontaktkoerper: 0.8 - 2 µm Sn  
BODY: 0.8 - 2 µm Sn

Ag: versilbert  
SILVER  
(e) min. 0.3 µm Ag  
(f) min. 2.8 µm Ag INSIDE  
min. 2.8 µm Ag innen  
(g) min. 0.2 µm Sn  
(k) min. 0.8 - 2 µm Sn

Au (galvanisch): galvanisch vergoldet  
GOLD-ELECTROPLATED  
(d) 0.05-1 µm Ni, beidseitig  
0.05-1 µm Ni, ON BOTH SIDES  
(e) 1-3 µm Ni, beidseitig  
1-3 µm Ni, ON BOTH SIDES  
(f) min. 1.8 µm Au ueber (e), innen  
MIN. 1.8 µm Au OVER (e), INSIDE  
(g) min. 0.2 µm Sn ueber (d), beidseitig  
MIN. 0.2 µm Sn OVER (d), ON BOTH SIDES  
(h) Au galvanisch aufaufend  
Au OVERPLATING  
(k) min. 0.8 - 2.0 µm Sn

# Bemerkungen

- Datumscode (Woche/Jahr z.B. KW 38/Jahr2009) und TE-Revision (z.B. Rev.A) DATE CODE (WEEK/YEAR E.G. WEEK NUMBER 38/YEAR2009) AND TE REVISION (E.G. REV. A)
- Passend zu Stiftkontakt siehe Zeichnung 929453 SUITABLE FOR PIN CONTACT SEE DRAWING 929453
- Einzelheiten der Ausfuehrung bleiben dem Hersteller ueberlassen DETAILS OF DESIGN ARE LEFT TO MANUFACTURER
- Nur fuer FLR-Leitung nach DIN 72551 Teil 6 FOR FLR-CONDUCTOR ACCORDING TO DIN 72551-6 ONLY
- 
- nicht fuer Neuanwendung NOT FOR NEW APPLICATION
- zugverstaerkte Leitung nach LV 112-4 REINFORCED WIRE ACCORDING LV 112-4
- Bei doppelt fallenden Werkzeugen wird die erste Ueberfeder mit einer Kennzeichnung "-" versehen WITH DOUBLE OUT DIES THE FIRST SPRING WILL BE PROVIDED WITH AN INDICATION "-"
- Varianten von Design1 werden durch die entsprechenden Versionen von Design2 ersetzt VARIANTS OF DESIGN1 ARE SUPERSEDED BY CORRESPONDING VERSIONS OF DESIGN2



Bestell-Nr. Ausfuehrung ORDER NO. DESIGN	Bestell-Nr. Ausfuehrung ORDER NO. DESIGN	Rev.	Bestell-Nr. Ausfuehrung ORDER NO. DESIGN	Rev.	VERSION	DGB Wire Size Range mm <sup>2</sup>	Oberflaeche SURFACE	Laenge LENGTH mm	Drahtcrimp WIRE CRIMP mm	Iso-crimp INSU-CRIMP mm	Gewicht WEIGHT g	Vergaeltung Spez. APPLICATION SPEC.	DGB Wire Size Range mm <sup>2</sup>	Isolations Ø INSULATIN DIA. mm	fuer Kammer Ø3.45 FOR CAVITY DIA. 3.45 mm	Blindstopfen RUBBER PLUG	fuer Kammer Ø4 FOR CAVITY DIA. 4 mm	Blindstopfen RUBBER PLUG	zugehoerige Einzeldichtung / SUITABLE SINGLE WIRE SEAL		
6-965906-5	5-965906-6	E	1-965906-5	D	Einzeldichtungssystem SINGLE WIRE SEAL SYSTEM	0.50-0.75	Au-Gel	A = 2.8 B = 4.2 C = 6.2 D = 14.3 M = 0.7	E = 2 G = 2.1 D <sub>Dr</sub> = 1	H = 3.5 K = 3.4 L = 1.5 D <sub>Iso</sub> = 2.4	0.13	114-18025	0.75	1.4-1.9	967067-1	967056-1 blau / BLUE	963142-1	967056-1 blau / BLUE			
5-965906-6	5-965906-5	D	965906-6	C			Ag	A = 2.5 B = 3.9 C = 5.9 D = 14 M = 0.7	E = 1.8 G = 1.8 D <sub>Dr</sub> = 0.8	H = 3.5 K = 3.4 L = 1.5 D <sub>Iso</sub> = 2.4					0.35		0.9-1.4			967067-2	963142-2
5-965906-5	5-965906-1	E	965906-5	D			Au	A = 2.5 B = 4.3 C = 6.2 D = 14.2 M = 0.6 (C26)	E = 1.5 G = 1.4	H = 4 K = 3.9 L = 3.1 D <sub>Iso</sub> = 2.6					0.13		0.85-1.25			967067-2	963142-2
5-965906-1	5-962885-6	D	965906-1	C			Sn	A = 2.5 B = 3.9 C = 5.9 D = 14 M = 0.7	E = 1.8 G = 1.8 D <sub>Dr</sub> = 0.8	H = 3.5 K = 3.4 L = 1.5 D <sub>Iso</sub> = 2.4					0.2					gelb YELLOW	grau GREY
5-962885-6	5-962885-5	J	962885-6	H	normale Anwendung USUAL APPLICATION	0.13 / 0.17	Au-Gel	A = 2.5 B = 3.9 C = 5.9 D = 14 M = 0.7	E = 1.8 G = 1.8 D <sub>Dr</sub> = 0.8	H = 2.3 K = 2.3 L = 0.6 D <sub>Iso</sub> = 1.4	0.11	114-18021	0.13	0.17	967067-2	967056-1 blau / BLUE	963142-2	967056-1 blau / BLUE			
5-962885-5	5-962885-1	K	962885-5	J			Ag	A = 2.5 B = 3.9 C = 5.9 D = 14 M = 0.7	E = 1.5 G = 1.4	H = 2.7 K = 2.9 L = 0.7 D <sub>Iso</sub> = 1.6					0.35		0.9-1.4			gelb YELLOW	grau GREY
5-962885-1	2141826-6	J	962885-1	H			Au	A = 2.5 B = 3.9 C = 5.9 D = 14 M = 0.7	E = 1.5 G = 1.4	H = 2.7 K = 2.9 L = 0.7 D <sub>Iso</sub> = 1.6					0.2					gelb YELLOW	grau GREY
2141826-6	2141826-5	A					Sn	A = 2.5 B = 3.9 C = 5.9 D = 14 M = 0.7	E = 1.5 G = 1.4	H = 2.7 K = 2.9 L = 0.7 D <sub>Iso</sub> = 1.6					0.17					gelb YELLOW	grau GREY
2141826-5	2141826-1	A			normale Anwendung USUAL APPLICATION	0.13 / 0.17	Au-Gel	A = 2.5 B = 3.9 C = 5.9 D = 14 M = 0.7	E = 1.8 G = 1.8 D <sub>Dr</sub> = 0.8	H = 2.3 K = 2.3 L = 0.6 D <sub>Iso</sub> = 1.4	0.11	114-18021	0.13	0.17	967067-2	967056-1 blau / BLUE	963142-2	967056-1 blau / BLUE			
2141826-1	6-963715-5	A	1-963715-5	J			Ag	A = 2.5 B = 3.9 C = 5.9 D = 14 M = 0.7	E = 1.5 G = 1.4	H = 2.7 K = 2.9 L = 0.7 D <sub>Iso</sub> = 1.6					0.13		0.85-1.25			gelb YELLOW	grau GREY
6-963715-5	5-963715-6	K	963715-5	J			Au	A = 2.5 B = 3.9 C = 5.9 D = 14 M = 0.7	E = 1.5 G = 1.4	H = 2.7 K = 2.9 L = 0.7 D <sub>Iso</sub> = 1.6					0.17					gelb YELLOW	grau GREY
5-963715-6	5-963715-5	J	963715-6	H			Sn	A = 2.5 B = 3.9 C = 5.9 D = 14 M = 0.7	E = 1.5 G = 1.4	H = 2.7 K = 2.9 L = 0.7 D <sub>Iso</sub> = 1.6					0.1					gelb YELLOW	grau GREY
5-963715-5	6-928999-5	K	963715-5	J	normale Anwendung USUAL APPLICATION	0.08-0.22	Au-Gel	A = 2.5 B = 3.9 C = 5.9 D = 14 M = 0.7	E = 1.8 G = 1.8 D <sub>Dr</sub> = 0.8	H = 2.3 K = 2.3 L = 0.6 D <sub>Iso</sub> = 1.4	0.11	114-18021	0.13	0.17	967067-2	967056-1 blau / BLUE	963142-2	967056-1 blau / BLUE			
5-963715-1	5-928999-6	J	963715-1	H			Ag	A = 2.5 B = 3.9 C = 5.9 D = 14 M = 0.7	E = 1.5 G = 1.4	H = 2.7 K = 2.9 L = 0.7 D <sub>Iso</sub> = 1.6					0.13		0.85-1.25			gelb YELLOW	grau GREY
6-928999-5	5-928999-6	T	1-928999-5	S			Au	A = 2.5 B = 3.9 C = 5.9 D = 14 M = 0.7	E = 1.5 G = 1.4	H = 2.7 K = 2.9 L = 0.7 D <sub>Iso</sub> = 1.6					0.17					gelb YELLOW	grau GREY
5-928999-6	5-928999-5	S	928999-6	R			Sn	A = 2.5 B = 3.9 C = 5.9 D = 14 M = 0.7	E = 1.5 G = 1.4	H = 2.7 K = 2.9 L = 0.7 D <sub>Iso</sub> = 1.6					0.1					gelb YELLOW	grau GREY
5-928999-5	5-928999-1	T	928999-5	S	normale Anwendung USUAL APPLICATION	0.08-0.22	Au-Gel	A = 2.5 B = 3.9 C = 5.9 D = 14 M = 0.7	E = 1.8 G = 1.8 D <sub>Dr</sub> = 0.8	H = 2.3 K = 2.3 L = 0.6 D <sub>Iso</sub> = 1.4	0.11	114-18021	0.13	0.17	967067-2	967056-1 blau / BLUE	963142-2	967056-1 blau / BLUE			
5-928999-1	2141824-6	S	928999-1	R			Ag	A = 2.5 B = 3.9 C = 5.9 D = 14 M = 0.7	E = 1.5 G = 1.4	H = 2.7 K = 2.9 L = 0.7 D <sub>Iso</sub> = 1.6					0.13		0.85-1.25			gelb YELLOW	grau GREY
2141824-6	2141824-5	A					Au	A = 2.5 B = 3.9 C = 5.9 D = 14 M = 0.7	E = 1.5 G = 1.4	H = 2.7 K = 2.9 L = 0.7 D <sub>Iso</sub> = 1.6					0.17					gelb YELLOW	grau GREY
2141824-5	2141824-1	A					Sn	A = 2.5 B = 3.9 C = 5.9 D = 14 M = 0.7	E = 1.5 G = 1.4	H = 2.7 K = 2.9 L = 0.7 D <sub>Iso</sub> = 1.6					0.1					gelb YELLOW	grau GREY
2141824-1	1355717-6	A			normale Anwendung USUAL APPLICATION	0.08-0.22	Au-Gel	A = 2.5 B = 3.9 C = 5.9 D = 14 M = 0.7	E = 1.8 G = 1.8 D <sub>Dr</sub> = 0.8	H = 2.3 K = 2.3 L = 0.6 D <sub>Iso</sub> = 1.4	0.11	114-18021	0.13	0.17	967067-2	967056-1 blau / BLUE	963142-2	967056-1 blau / BLUE			
1355717-6	1355717-5	A	1-963715-5	J			Ag	A = 2.5 B = 3.9 C = 5.9 D = 14 M = 0.7	E = 1.5 G = 1.4	H = 2.7 K = 2.9 L = 0.7 D <sub>Iso</sub> = 1.6					0.13		0.85-1.25			gelb YELLOW	grau GREY
1355717-5	1355717-1	C	963715-5	J			Au	A = 2.5 B = 3.9 C = 5.9 D = 14 M = 0.7	E = 1.5 G = 1.4	H = 2.7 K = 2.9 L = 0.7 D <sub>Iso</sub> = 1.6					0.17					gelb YELLOW	grau GREY
1355717-1		C					Sn	A = 2.5 B = 3.9 C = 5.9 D = 14 M = 0.7	E = 1.5 G = 1.4	H = 2.7 K = 2.9 L = 0.7 D <sub>Iso</sub> = 1.6					0.1					gelb YELLOW	grau GREY

THIS DRAWING IS A CONTROLLED DOCUMENT.		OWN S. Garcia 05JAN1999		TE Connectivity
DIMENSIONS: mm		CHK M. Bleicher 13AUG2003		NAME MQS Tabellenzeichnung Buchsenkontakt TABLE SOCKET CONTACT
TOLERANCES UNLESS OTHERWISE SPECIFIED: ±0.2		APVD R. Jetter 13AUG2003	SIZE 108-18030 APPLICATION SPEC	
MATERIAL: -		114-18021 / 114-18025	RESTRICTED TO	
CUSTOMER DRAWING		WEIGHT: -	SCALE 10:1 SHEET 1 of 1 REV C26	

# Mouser Electronics

Authorized Distributor

Click to View Pricing, Inventory, Delivery & Lifecycle Information:

[TE Connectivity:](#)

[1355717-1](#)