

THIS DRAWING IS UNPUBLISHED

RELEASED FOR PUBLICATION

COPYRIGHT

ALL RIGHTS RESERVED

LOC

DIST

REVISIONS

FB

00

P LTR

DESCRIPTION

DATE

DWN

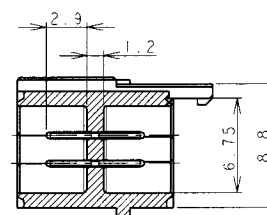
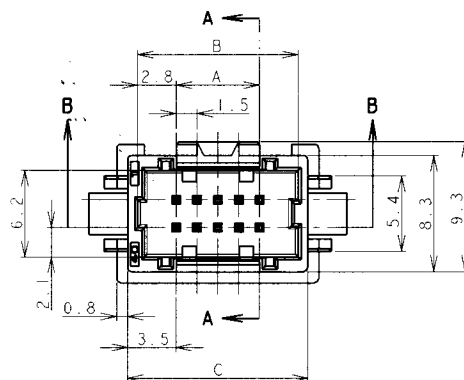
APVD

P REVISED PER ECO-11-005033

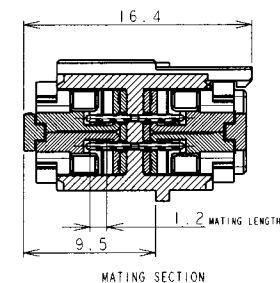
19APR11

RK

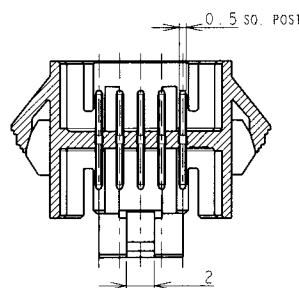
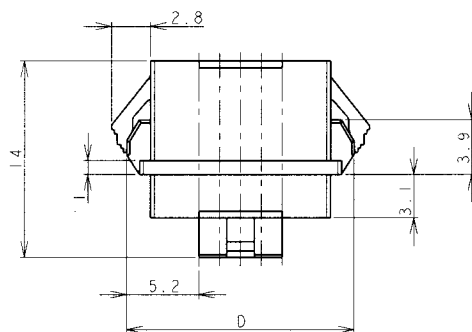
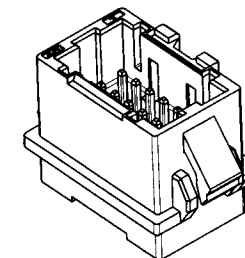
HMR



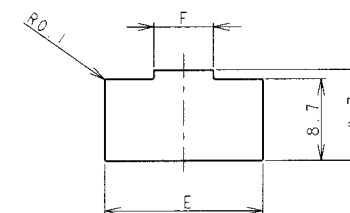
SECT A-A



MATING SECTION



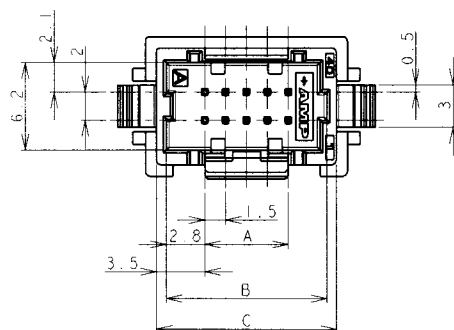
SECT B-B



PANEL CUTOUT DIMENSION (TOLERANCE ± 0.1 mm)
(RECOMMENDED PANEL THICKNESS: 0.8mm-1.6mm)

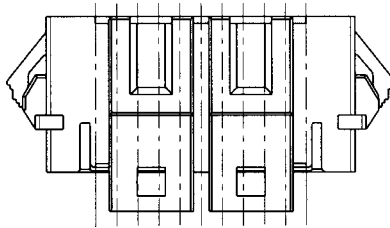
NOTES

1. MATERIAL
HOUSING: 66NYLON(94V-0), COLOR: WHITE, BLUE
POST: TIN BRASS WIRE
2. THE PANEL SHOULD BE PUNCHED SO THAT THE HOUSING ENTERS THE PANEL IN THE SAME DIRECTION AS PUNCH.

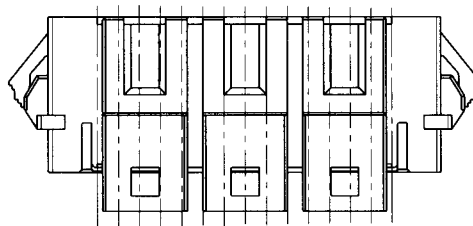


DIMENSIONS mm		TOLERANCES UNLESS OTHERWISE SPECIFIED:		DWN J. JIANG 04FEB03	TE Connectivity	
				CHK S. YAO 04FEB03		
				APVD T. SASAKI 04FEB03	NAME	
				PRODUCT SPEC	AMP MINI COMMON TERMINATED (CT) CONNECTOR 1.5 mm PITCH	
				APPLICATION SPEC	DOUBLE ROW POST HEADER ASS'Y PANEL MOUNT TYPE	
				114-5223	RESTRICTED TO	
MATERIAL		FINISH		WEIGHT	SIZE A3	CAGE CODE 00779
SEE NOTE 1		SEE NOTE 1		CUSTOMER DRAWING	DRAWING NO. C-292216	SHEET 1 OF 2
					SCALE	REV P

LOC	DIST	REVISIONS					
FB	00	P	LTR	DESCRIPTION	DATE	DWN	APVD
			-	SEE SHEET 1	-	-	-



22~28 Pos.



30~40 Pos.



2.37	20.6	39.5	38.9	35.5	34.1	28.5	40	9-292216-0	4-292216-0
2.30	20.6	38.0	37.4	34.0	32.6	27.0	38	8-292216-8	3-292216-8
2.21	20.6	36.5	35.9	32.5	31.1	25.5	36	8-292216-6	3-292216-6
2.13	20.6	35.0	34.4	31.0	29.6	24.0	34	8-292216-4	3-292216-4
2.05	20.6	33.5	32.9	29.5	28.1	22.5	32	8-292216-2	3-292216-2
1.97	20.6	32.0	31.4	28.0	26.6	21.0	30	8-292216-0	3-292216-0
1.82	13.5	30.5	29.9	26.5	25.1	19.5	28	7-292216-8	2-292216-8
1.74	13.5	29.0	28.4	25.0	23.6	18.0	26	7-292216-6	2-292216-6
1.63	13.5	27.5	26.9	23.5	22.1	16.5	24	7-292216-4	2-292216-4
1.55	13.5	26.0	25.4	22.0	20.6	15.0	22	7-292216-2	2-292216-2
WEIGHT (g)	F	E	D	C	B	A	Pos	BLUE	WHITE
DIMENSIONS							P/N		

RELEASED FOR PUBLICATION

ALL RIGHTS RESERVED.

COPYRIGHT BY

THIS DRAWING IS UNPUBLISHED

DIMENSIONS: mm		DWN	MATERIAL SEE SHEET 1		FINISH SEE SHEET 1	
TOLERANCES UNLESS OTHERWISE SPECIFIED: 10 > : ±0.2 30 > 10 : ±0.25 100 > 30 : ±0.3 ANGLE : ±3°		CHK	 TE Connectivity			
		APVD				
		PRODUCT SPEC	NAME AMP MINI COMMON TERMINATED (CT) CONNECTOR 1.5 mm PITCH DOUBLE ROW POST HDR ASS'Y PANEL MOUNT TYPE			
		APPLICATION SPEC	SIZE A4	CAGE CODE 00779	DRAWING NO C-292216	RESTRICTED TO
		WEIGHT	CUSTOMER DRAWING			
		SCALE NON		SHEET 2		OF 2
		REV P				

Mouser Electronics

Authorized Distributor

Click to View Pricing, Inventory, Delivery & Lifecycle Information:

[TE Connectivity:](#)

[3-292216-0](#)