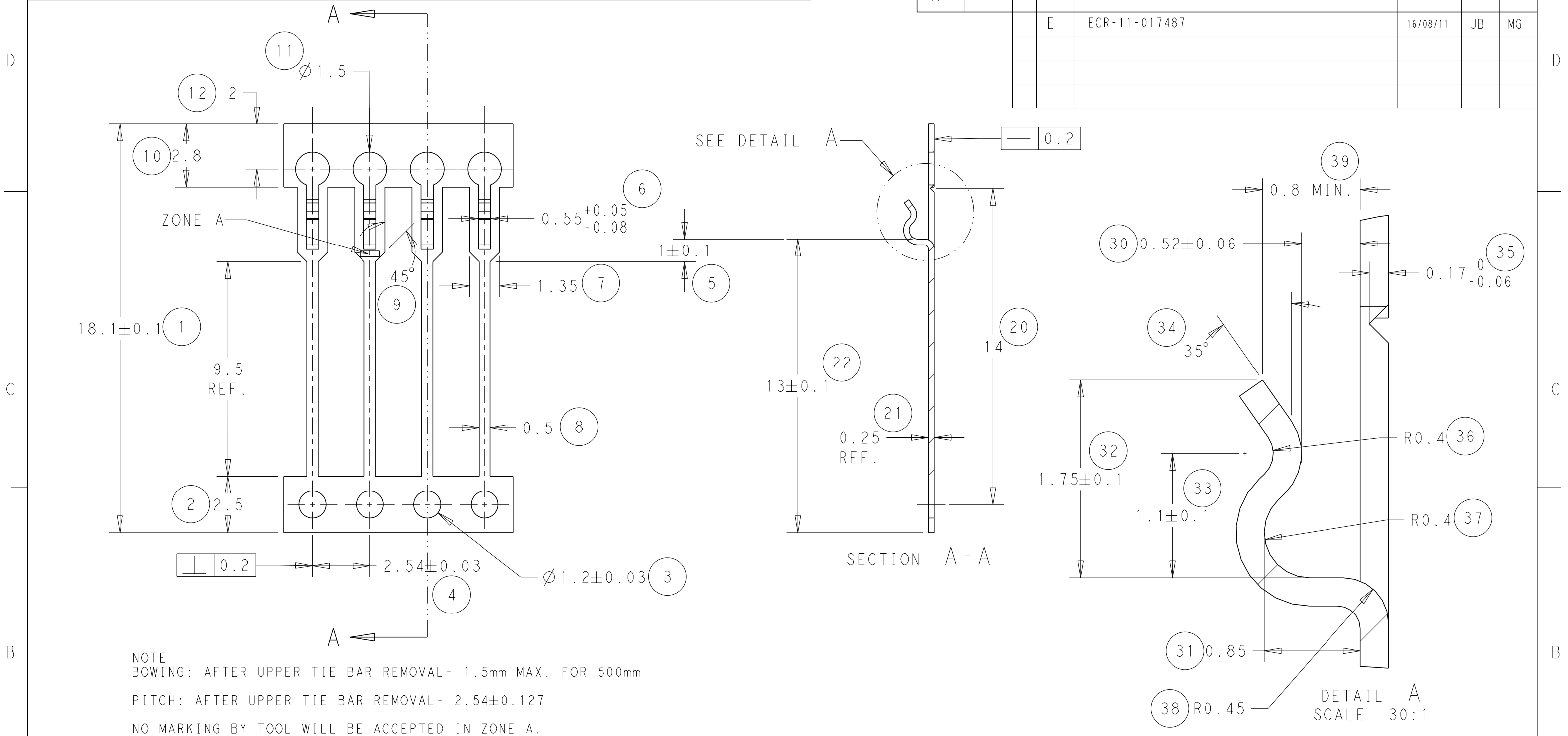
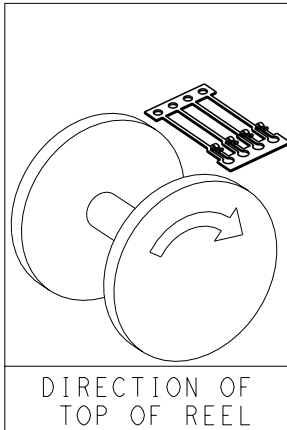
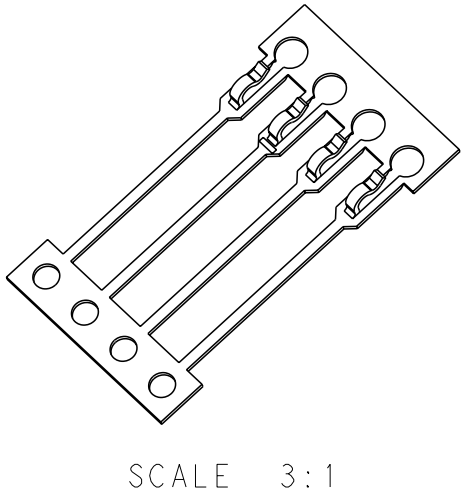


2		1					
LOC	DIST	REVISIONS					
B	-	P	LTR	DESCRIPTION	DATE	DWN	APVD
			E	ECR-11-017487	16/08/11	JB	MG

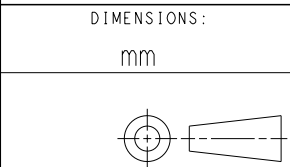


NOTE  
BOWING: AFTER UPPER TIE BAR REMOVAL- 1.5mm MAX. FOR 500mm  
PITCH: AFTER UPPER TIE BAR REMOVAL- 2.54±0.127  
NO MARKING BY TOOL WILL BE ACCEPTED IN ZONE A.



DIRECTION "0"	CONTACTS DOWN
DIRECTION "1"	CONTACTS UPWARDS
DIRECTION	

THIS DRAWING IS A CONTROLLED DOCUMENT.



MATERIAL SEE ABOVE

DIMENSIONS:		TOLERANCES UNLESS OTHERWISE SPECIFIED:	
mm			
0 PLC	±		
1 PLC	±		
2 PLC	±0.05		
3 PLC	±		
4 PLC	±		
ANGLES	±0.5		
FINISH	-		

DWN	J. BRIGHT	16/08/11
CHK	M. GREENER	16/08/11
APVD	D. PENNINGTON	16/08/11
PRODUCT SPEC	-	
APPLICATION SPEC	-	
WEIGHT	-	

0	Ni & Sn	1544425-2
0	Sn	1544425-1
REELING	FINISH	PART NUMBER



TE Connectivity

NAME				SIL CONTACT			
-				-			
SIZE	CAGE CODE	DRAWING NO	RESTRICTED TO				
A3	00779	C=1544425	-				
CUSTOMER DRAWING		SCALE	NTS	SHEET	1	OF	1
		REV	E				

# Mouser Electronics

Authorized Distributor

Click to View Pricing, Inventory, Delivery & Lifecycle Information:

[TE Connectivity:](#)

[1544425-2](#)