
$$-C \begin{matrix} +.010 \\ -.005 \end{matrix}$$
$$-D \begin{matrix} +.010 \\ -.005 \end{matrix}$$

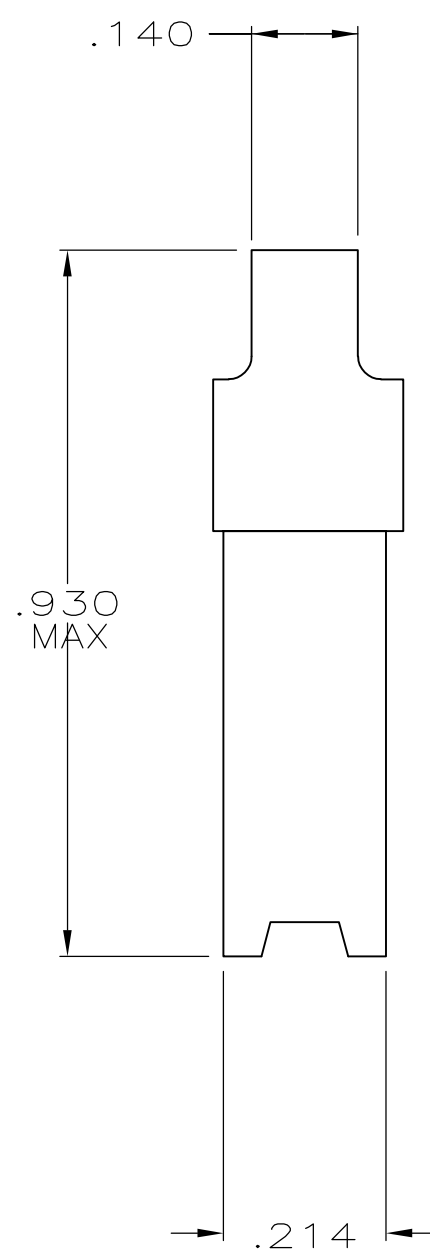
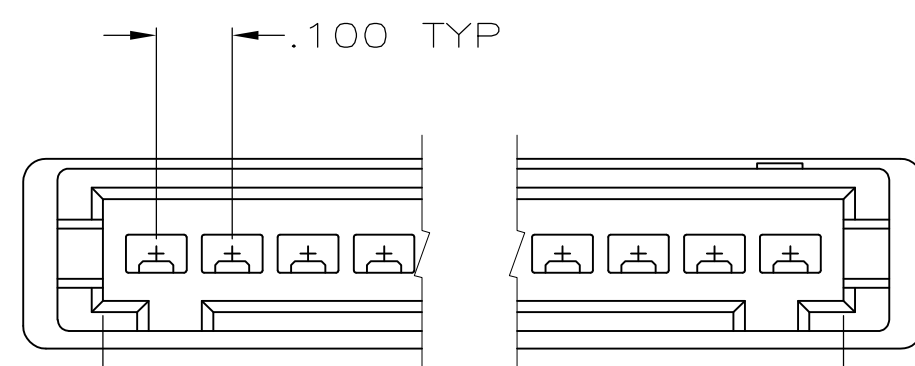
.200

.560

$$\begin{array}{r} B + .010 \\ - .005 \\ \hline \end{array}$$

-.100 TYP

.250

$$A \begin{matrix} +.010 \\ -.004 \end{matrix}$$


-CABLE AND/OR WIRE
SUPPLIED BY CUSTOMER

5 OBSOLETE

-PIN CONTACTS
MUST BE ORDERED
SEPARATELY

CRIMPED CONTACT SHOWN
FOR REFERENCE ONLY

3.750	3.626	3.660	3.540	35	\triangle_4	3-485893-3
3.650	3.526	3.560	3.440	34	\triangle_4	3-485893-2
3.550	3.426	3.460	3.340	33	\triangle_4	3-485893-1
3.450	3.326	3.360	3.240	32	\triangle_4	3-485893-0
3.350	3.226	3.260	3.140	31	\triangle_4	2-485893-9
3.250	3.126	3.160	3.040	30	\triangle_4	2-485893-8
3.150	3.026	3.060	2.940	29	\triangle_4	2-485893-7
3.050	2.926	2.960	2.840	28	\triangle_4	2-485893-6
2.950	2.826	2.860	2.740	27	\triangle_4	2-485893-5
2.850	2.726	2.760	2.640	26	\triangle_4	2-485893-4
2.750	2.626	2.660	2.540	25		2-485893-3
2.650	2.526	2.560	2.440	24	\triangle_4	2-485893-2
2.550	2.426	2.460	2.340	23	\triangle_4	2-485893-1
2.450	2.326	2.360	2.240	22	\triangle_4	2-485893-0
2.350	2.226	2.260	1.140	21	\triangle_4	1-485893-9
2.250	2.126	2.160	2.040	20		1-485893-8
2.150	2.026	2.060	1.940	19	\triangle_4	1-485893-7
2.050	1.926	1.960	1.840	18		1-485893-6
1.950	1.826	1.860	1.740	17	\triangle_4	1-485893-5
1.850	1.726	1.760	1.640	16		1-485893-4
1.750	1.626	1.660	1.540	15		1-485893-3
1.650	1.526	1.560	1.440	14		1-485893-2
1.550	1.426	1.460	1.340	13		1-485893-1
1.450	1.326	1.360	1.240	12		1-485893-0
1.350	1.226	1.260	1.140	11		485893-9
1.250	1.126	1.160	1.040	10		485893-8
1.150	1.026	1.060	.940	9		485893-7
1.050	.926	.960	.840	8		485893-6
.950	.826	.860	.740	7		485893-5
.850	.726	.760	.640	6		485893-4
.750	.626	.660	.540	5		485893-3
.650	.526	.560	.440	4		485893-2
2.550	.426	.460	.340	3		485893-1

SUPERSEDED BY 494032-2

1. HOUSING WILL ACCOMMODATE FLEXIBLE FLAT CONDUCTOR CABLE
.050 OR .062 WIDE CONDUCTORS ON .100 CENTERS AND/OR
#32-22 AWG WIRE WITH INSULATION RANGE .025-.056 DIAMETER.
- 2 AMP TRADEMARK MOLDED IN THIS AREA
- 3 INDICATES FIRST POSITION
- 4 OBSOLETE PART NUMBER
- 5 OBSOLETE PARTS: OBSOLETE CIS STREAMLINING PER D.RENAUD/D.SINIS

Mouser Electronics

Authorized Distributor

Click to View Pricing, Inventory, Delivery & Lifecycle Information:

[TE Connectivity:](#)

[1-485893-4](#)