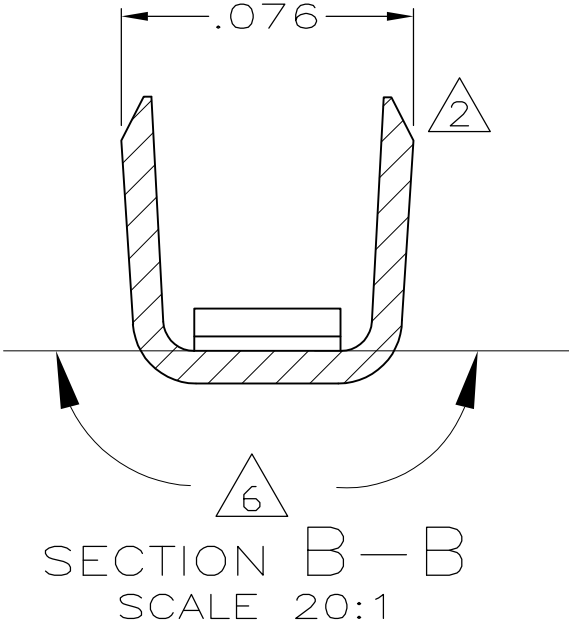
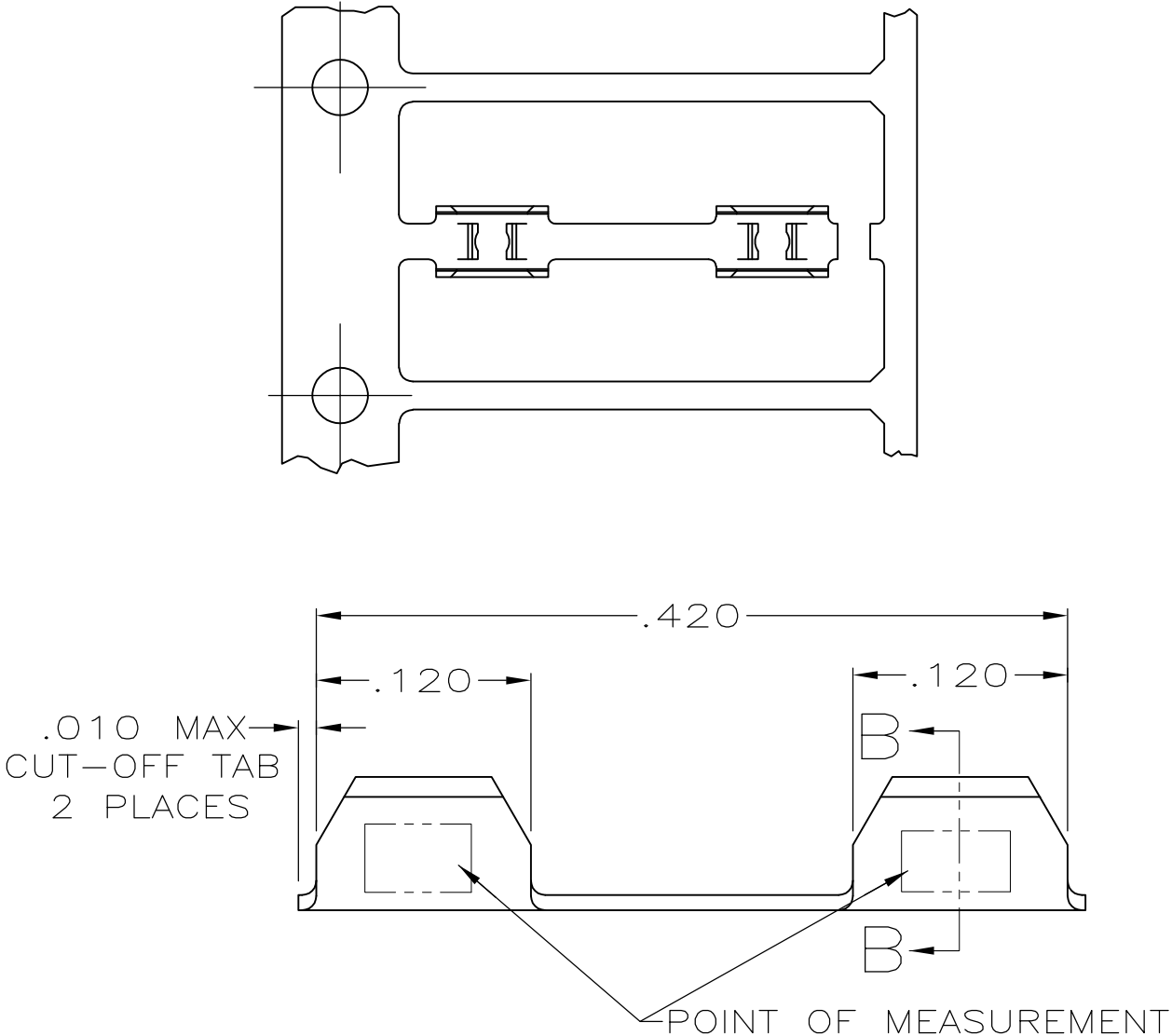


| | | | | | | | |
|-----|------|-----------|-----|---------------------------|---------|-----|------|
| 2 | | 1 | | | | | |
| LOC | DIST | REVISIONS | | | | | |
| GP | 00 | P | LTR | DESCRIPTION | DATE | DWN | APVD |
| | | | H1 | REVISED PER ECO-09-021510 | 09SEP09 | KK | AEG |
| | | | H2 | REVISED PER ECO-12-011709 | 26JUN12 | RW | SY |

- 1
- .000100-.000200 BRIGHT TIN-LEAD OVER .000050 MIN. NICKEL.
- 2
- SPLICE WILL ACCOMMODATE FLEXIBLE FLAT CABLE .050 OR .062 WIDE CONDUCTORS ON .100 CENTERS (CABLE=.015 MAX THK).
- 3
- FOR FFC MACHINE.
- 4
- GOLD FLASH IN CRIMP BARRELS OVER .000050 MIN NICKEL ON ENTIRE CONTACT.
- 5
- OBSOLETE PARTS: OBSOLETE CIS STREAMLINING PER D.RENAUD/D.SINISI
- 6
- GOLD PLATING MAY OR MAY NOT BE PRESENT ON THE BOTTOM OF THE CRIMP BARREL IN THIS AREA



| | | | | |
|---|----------|-------------|--------|-------------|
| 5 | OBSOLETE | LOOSE PIECE | 4 | 487787-5 |
| | | REEL | 3 | 487787-4 |
| | | LOOSE PIECE | 1 | 487787-3 |
| | | REEL | 3 | 487787-2 |
| | | REMARKS | FINISH | PART NUMBER |

| | | | | |
|--|--|---|---|--------------------|
| THIS DRAWING IS A CONTROLLED DOCUMENT. | | DWN J. GALLUCCI 3-23-89 | Tyco Electronics Corporation Harrisburg, PA 17105-3608 | |
| | | CHK D.L. ROCKER 3-23-89 | | |
| DIMENSIONS: INCHES | TOLERANCES UNLESS OTHERWISE SPECIFIED: | APVD 4-6-89 - W.T. PARKER | NAME SPLICE, FFC TO FFC, .100CL - | |
| | | PRODUCT SPEC 4-6-89 108-9024 G.D. MILLER | | |
| | 0 PLC ± - 1 PLC ± - 2 PLC ± - 3 PLC ± .005 4 PLC ± - ANGLES ± - | APPLICATION SPEC 114-16002 | SIZE A3 | CAGE CODE 00779 |
| | | WEIGHT - | DRAWING NO C-487787 | RESTRICTED TO - |
| MATERIAL PHOS. BRONZE | FINISH SEE TABLE | CUSTOMER DRAWING | | SCALE 10:1 |
| | | SHEET 1 OF 1 | | REV H2 |

Mouser Electronics

Authorized Distributor

Click to View Pricing, Inventory, Delivery & Lifecycle Information:

[TE Connectivity:](#)

[487787-2](#)