

4

3

2

1

THIS DRAWING IS UNPUBLISHED.

RELEASED FOR PUBLICATION

ALL RIGHTS RESERVED.

© COPYRIGHT - By -

LOC

DIST

REVISIONS

G

86

P

LTR

DESCRIPTION

DATE

DWN

APVD

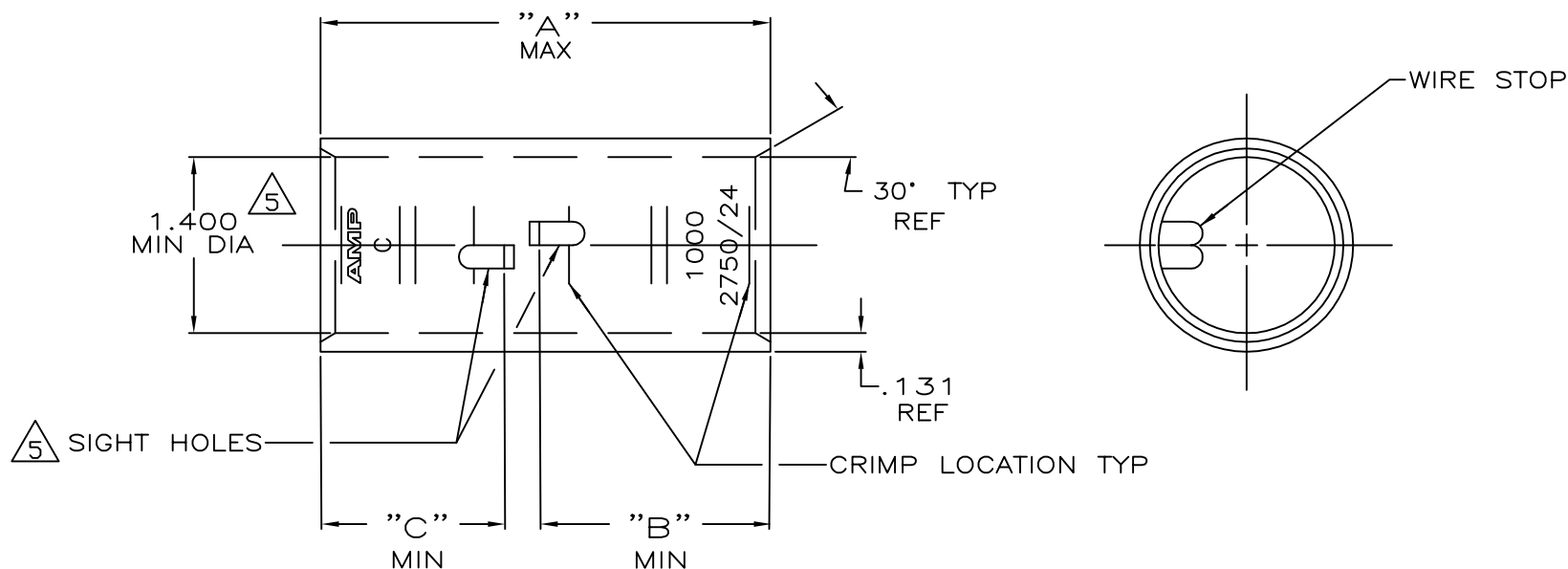
S

ECR-13-000998

11FEB2013

PK

HS



1 TIN PL .000150 MIN THK
MIL-T 10727

2 WIRE RANGE: 950 - 1125 MCM

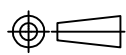
3 PART NO: 324471; .665 LB.
PART NO: 1-324471-0; .665 LB.
PART NO: 2-324471-1; .743 LB.

4 PREPRODUCTION - FASR REQ.

5 .045 MAX BURR ALLOWED INSIDE THE WIRE
BARREL ID IN AREA OF SIGHT HOLE.

1.46	1.83	3.64	1	COPPER	4 2-324471-1
1.46	1.46	3.27	CLEANED	ASTM-B-75	1-324471-0
			1	ANNEALED	324471
"C"	"B"	"A"	FINISH	MATERIAL	PART No

THIS DRAWING IS A CONTROLLED DOCUMENT.

DIMENSIONS:
INCHESMATERIAL
SEE TABLETOLERANCES UNLESS
OTHERWISE SPECIFIED:

0 PLC ± -
1 PLC ± -
2 PLC ± -
3 PLC ± -
4 PLC ± -
ANGLES ± -

FINISH
SEE TABLE

DWN 4/24/89

CHK DK SCHRUM

MS FEHER 4/24/89

APVD 11/8/89

WJ VOCKROTH

PRODUCT SPEC

APPLICATION SPEC

WEIGHT

3

CUSTOMER DRAWING



TE Connectivity

SPLICE, BUTT, AMPPOWER
WIRE SIZE: 1000 MCM

SIZE

CAGE CODE

DRAWING NO

A3 00779 C=324471

RESTRICTED TO

- S

Mouser Electronics

Authorized Distributor

Click to View Pricing, Inventory, Delivery & Lifecycle Information:

[TE Connectivity:](#)

[324471](#)