

LOC	DIST	REVISIONS					
		P	LTR	DESCRIPTION	DATE	DWN	APVD
AG	53		L	REVISED PER ECO-15-006927	17JUN2015	NK	MM

- 7

PART NO. DENOTES INDIVIDUAL TWO POSITION SHUNT WHICH IS PACKAGED LOOSE PIECE.
- 8

CONTACT PLATED WITH 0.00076[.000030] GOLD IN CONTACT AREA OVER 0.00127[.000050] NICKEL OVERALL.
- 9

CONTACT PLATED WITH 0.00254[.000100] MATTE TIN OVER ALL.

- 1

MATERIAL:
HOUSING: GLASS-FILLED POLYESTER, COLOR-SEE TABLE.
- 2

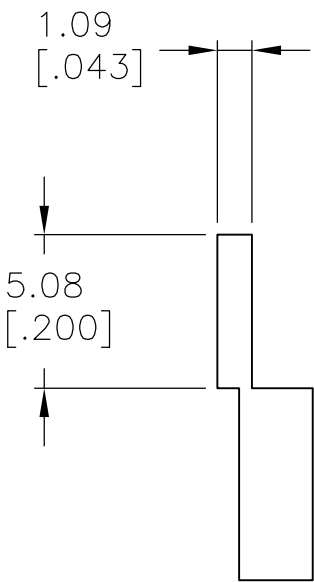
CONTACT PLATED WITH 0.00254[.000100] TIN-LEAD OVER ALL.
- 3

CONTACT PLATED WITH 0.00038[.000015] GOLD IN CONTACT AREA OVER 0.00127[.000050] NICKEL OVER ALL.
- 4

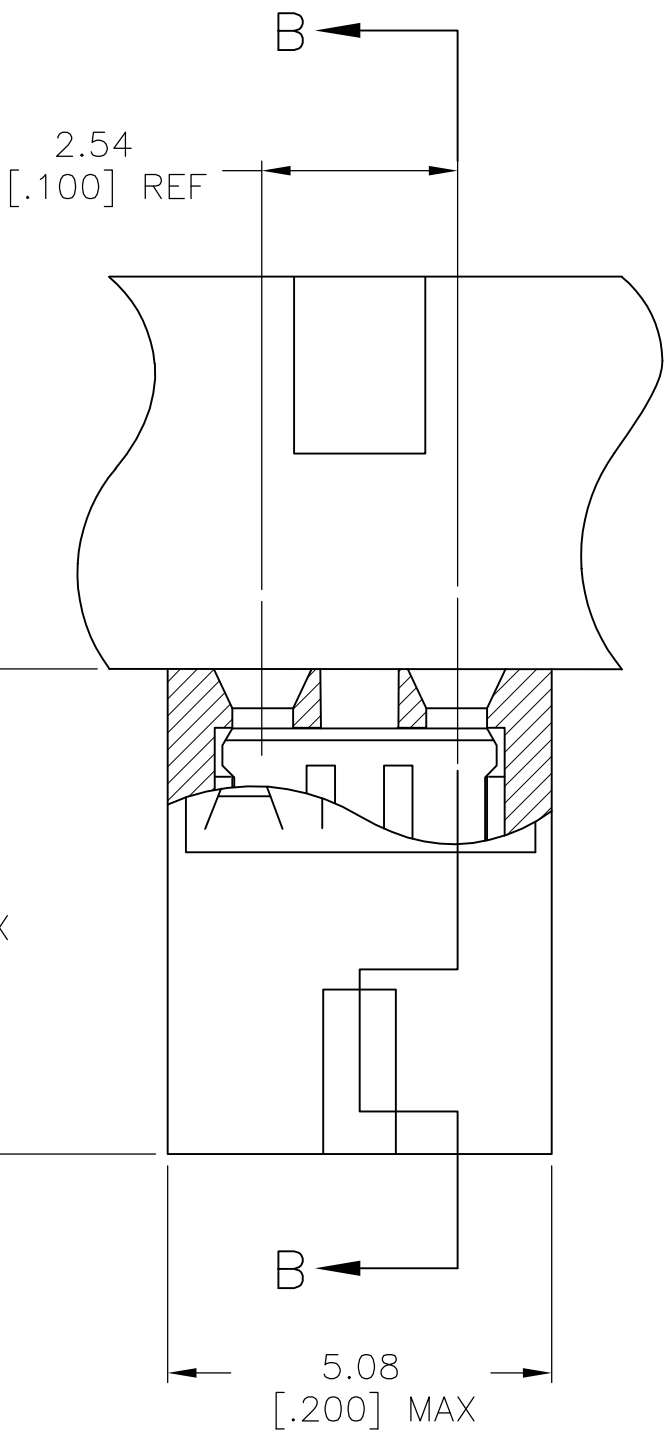
PART NO. DENOTES INDIVIDUAL TWO POSITION SHUNT, WHICH IS PACKAGED ON BREAKAWAY COMBS OF TEN SHUNTS.
- 5

CONNECTOR MATES WITH WIRE WRAP POSTS, 0.64[.025] SQUARE OR ROUND AND 0.56[.022] X 0.66[.026] POSTS. LENGTH 5.08[.200] MINIMUM.
- 6

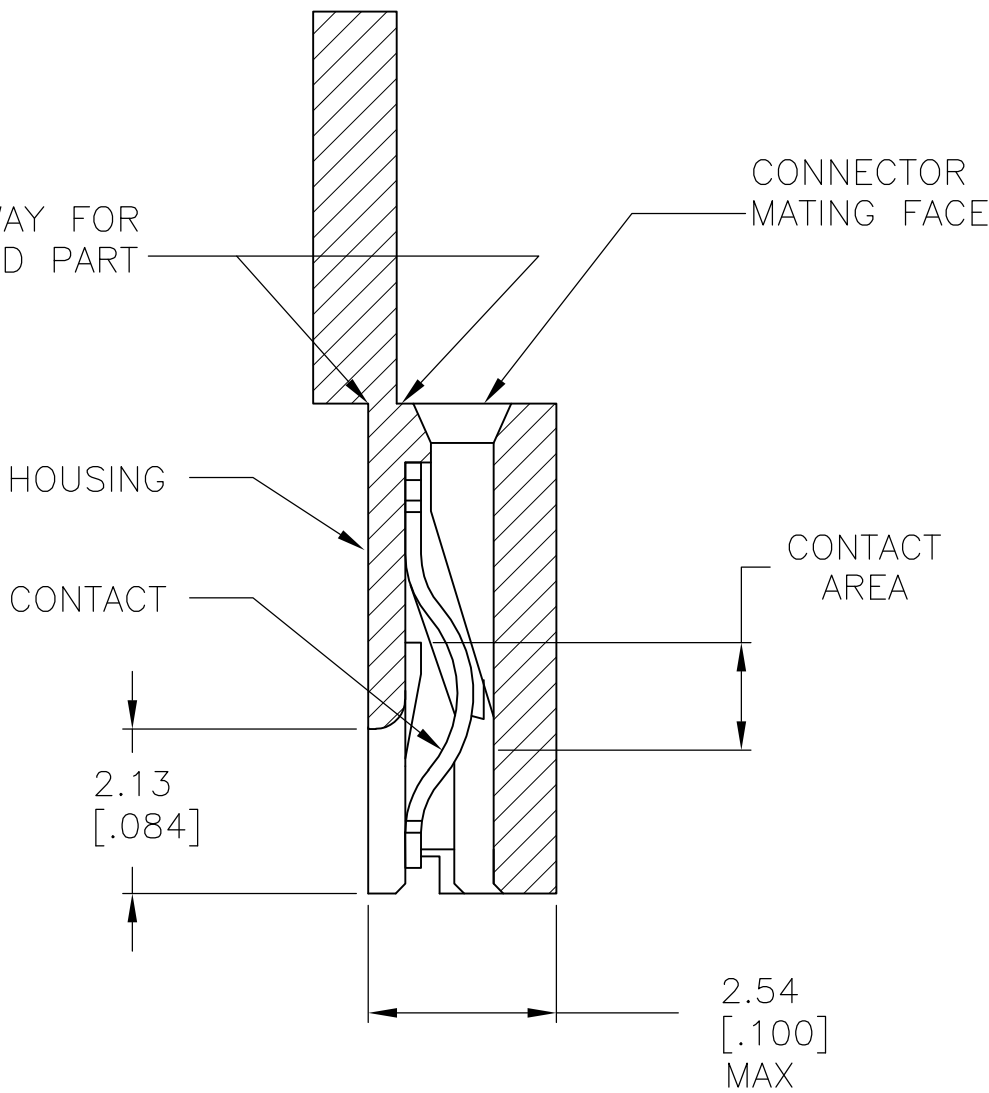
CONTACT PLATED WITH 0.00013[.000005] GOLD IN CONTACT AREA OVER 0.00127[.000050] NICKEL OVER ALL.



SEE DETAIL A





BREAK AWAY FOR
2 POSN FINISHED PART



SECTION B-B
SCALE 10:1

DETAIL A
SCALE 10:1

	PHOSPHOR BRONZE	BLACK	<div>9</div>	2-382811-1	<div>4</div>
		BLACK	<div>8</div>	2-382811-0	<div>4</div>
		BLACK	<div>2</div>	1-382811-9	<div>7</div>
		BLACK	<div>6</div>	1-382811-8	<div>7</div>
		RED	<div>2</div>	1-382811-7	<div>4</div>
		BLACK	<div>3</div>	1-382811-6	<div>7</div>
		BLACK	<div>8</div>	1-382811-5	<div>7</div>
		RED	<div>8</div>	1-382811-4	<div>4</div>
		BLUE	<div>8</div>	1-382811-3	<div>4</div>
		BLACK	<div>9</div>	1-382811-2	<div>7</div>
		BLUE	<div>9</div>	1-382811-1	<div>4</div>
OBSOLETE	BERYLLIUM COPPER	BLACK	<div>3</div>	1-382811-0	<div>4</div>
	PHOSPHOR BRONZE	RED	<div>3</div>	382811-9	<div>4</div>
		BLACK	<div>6</div>	382811-8	<div>4</div>
		RED	<div>9</div>	382811-7	<div>4</div>
		BLACK	<div>3</div>	382811-6	<div>4</div>
		BLACK	<div>2</div>	382811-5	<div>4</div>
		BLUE	<div>6</div>	382811-4	<div>4</div>
		RED	<div>6</div>	382811-3	<div>4</div>
		BLUE	<div>3</div>	382811-2	<div>4</div>
		BLUE	<div>2</div>	382811-1	<div>4</div>
	CONTACT MATERIAL	HOUSING COLOR	FINISH	PART NO	

THIS DRAWING IS A CONTROLLED DOCUMENT.			DWN W. SORAH	8-18-93	 TE Connectivity			
DIMENSIONS: mm [INCHES]			CHK R. TALLEY	8-23-93				
TOLERANCES UNLESS OTHERWISE SPECIFIED:			APVD D. HUFFMAN	8-23-93	NAME			
			PRODUCT SPEC					ECONOMY SHUNT ASSEMBLY
			108-1476					
			APPLICATION SPEC					
			114-1059					
MATERIAL			WEIGHT		SIZE	CAGE CODE	DRAWING NO	RESTRICTED TO
HOUSING CONTACT: SEE TABLE			-		A2	00779	C=382811	-
SEE TABLE			CUSTOMER DRAWING		SCALE		SHEET	REV
					4:1		1 of 1	L

Mouser Electronics

Authorized Distributor

Click to View Pricing, Inventory, Delivery & Lifecycle Information:

[TE Connectivity:](#)

[382811-5](#)