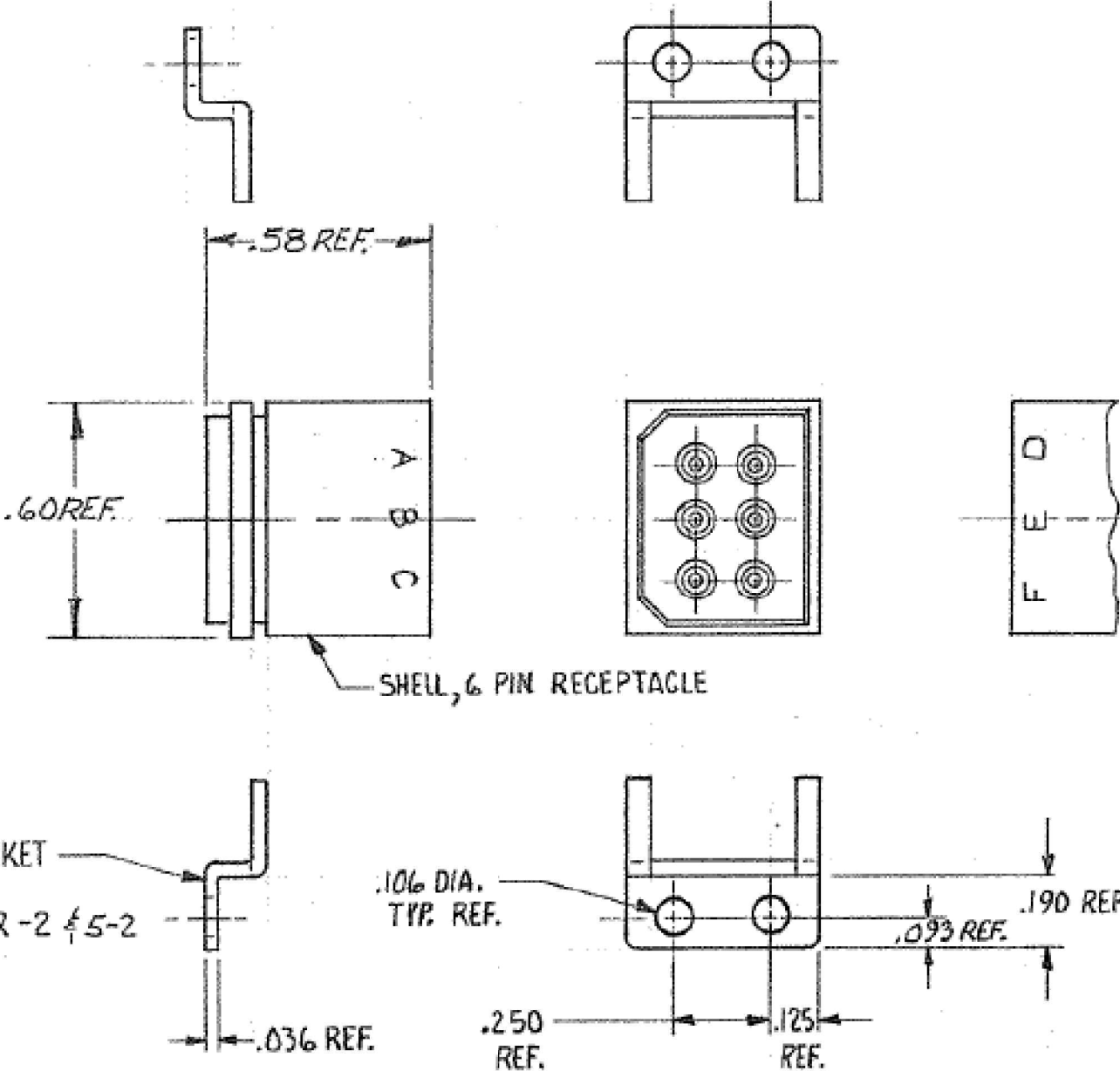
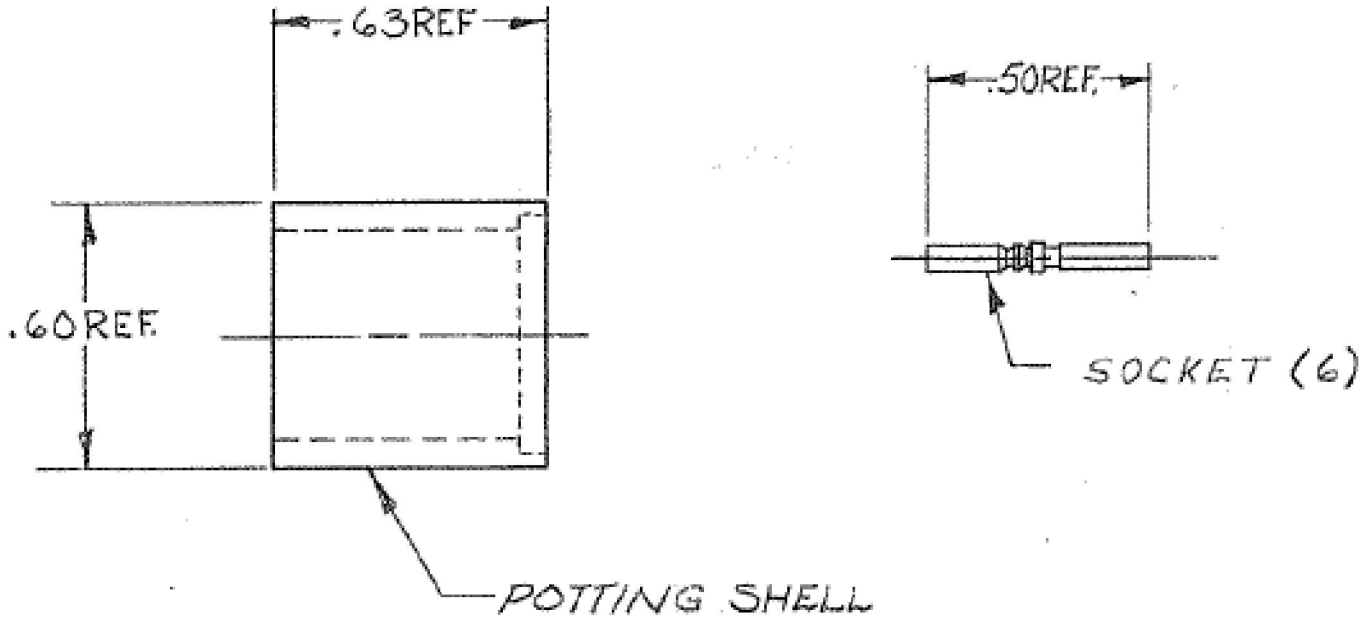

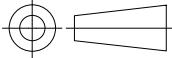


LOC	DIST	REVISIONS				
		P	LTR	DESCRIPTION	DATE	DWN APVD
—	—		E	ECO-14-006390	12AUG2014	MGM CT



5-861393-2	WITH MOUNTING BRACKETS TIN PLATED PER ASTM-B-545
861393-2	WITH MOUNTING BRACKETS 93/7 TIN-LEAD PLATED
861393-1	W/O MOUNTING BRACKETS
PART NO.	DESCRIPTION

- NOTE:
- 1) CAVITY LETTERS MARKED
  - 2) SEE 862091-1 FOR ASSEMBLY INSTRUCTIONS.

THIS DRAWING IS A CONTROLLED DOCUMENT.		DWN C. KUSTER 05AUG1974	<div> TE Connectivity</div>			
		CHK C. KUSTER 05AUG1974				
DIMENSIONS: INCHES	TOLERANCES UNLESS OTHERWISE SPECIFIED:  0 PLC ± - 1 PLC ± - 2 PLC ± - 3 PLC ± - 4 PLC ± - ANGLES ± -	APVD —	NAME  —  RECEPTACLE ASSY KIT, LGH  —			
		PRODUCT SPEC —				
		APPLICATION SPEC —				
		MATERIAL —	FINISH —	SIZE A3	CAGE CODE 00779	DRAWING NO C-861393
		WEIGHT —				
CUSTOMER DRAWING			SCALE 1:1	SHEET 1 OF 1	REV E	

# Mouser Electronics

Authorized Distributor

Click to View Pricing, Inventory, Delivery & Lifecycle Information:

[TE Connectivity:](#)

[861393-1](#)