

Sealing for Appliance Inlets



6100 with sealing to appliance

Approvals and Compliances

Description

- Protects from ingressing fluids and dust into the appliance
- 1 Function

Weblinks


[pdf datasheet](#), [html-datasheet](#), [General Product Information](#), [Distributor-Stock-Check](#), [Accessories](#), [Detailed request for product](#)

Approvals and Compliances

Detailed information on product approvals, code requirements, usage instructions and detailed test conditions can be looked up in [Details about Approvals](#)



Application standards

Application standards where the product can be used

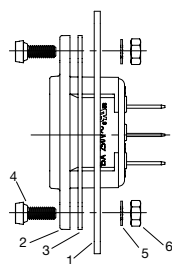
Organization	Design	Standard	Description
	Designed for applications acc.	IEC/UL 60950	IEC 60950-1 includes the basic requirements for the safety of information technology equipment.

Compliances

The product complies with following Guide Lines

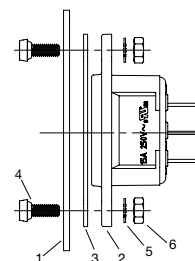
Identification	Details	Initiator	Description
	RoHS	SCHURTER AG	EU Directive RoHS 2011/65/EU
	REACH	SCHURTER AG	On 1 June 2007, Regulation (EC) No 1907/2006 on the Registration, Evaluation, Authorization and Restriction of Chemicals 1 (abbreviated as "REACH") entered into force.

Assembly Instructions



- Panel thickness max. 3 mm
Tightening torque max 0.1 Nm
- 1 Chassis
 - 2 Appliance inlet
 - 3 Flat gasket (included in 0098.0103)
 - 4 Screw with sealing (included in 0098.0103)
 - 5 Lock washer (not part of kit)
 - 6 Nut 0.8d (not part of kit)

1) Mounted from rear side



- Panel thickness max. 3 mm
Tightening torque max 0.1 Nm

All Variants

Suitable for	Degree of Protection	Mounting side	Mounting instruction	Mounting option	Order Number
6100-3, 6120-3	IP 54	Front-/Rear-Side	1)	Screws included	0098.0103

Most Popular.

Availability for all products can be searched real-time:<https://www.schurter.com/en/Stock-Check/Stock-Check-SCHURTER>

Mouser Electronics

Authorized Distributor

Click to View Pricing, Inventory, Delivery & Lifecycle Information:

[Schurter:](#)

[0098.0103](#)