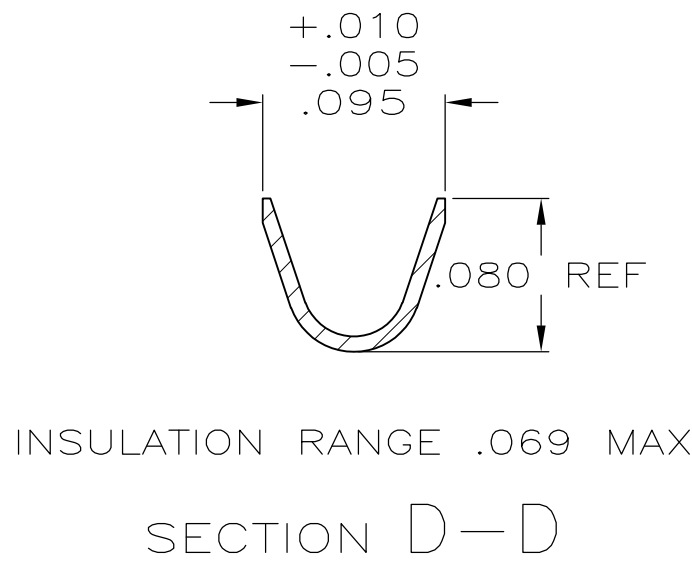
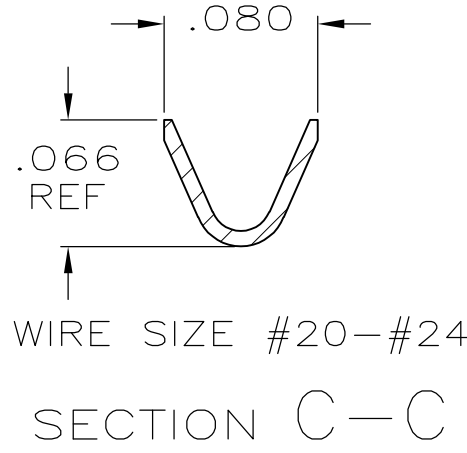
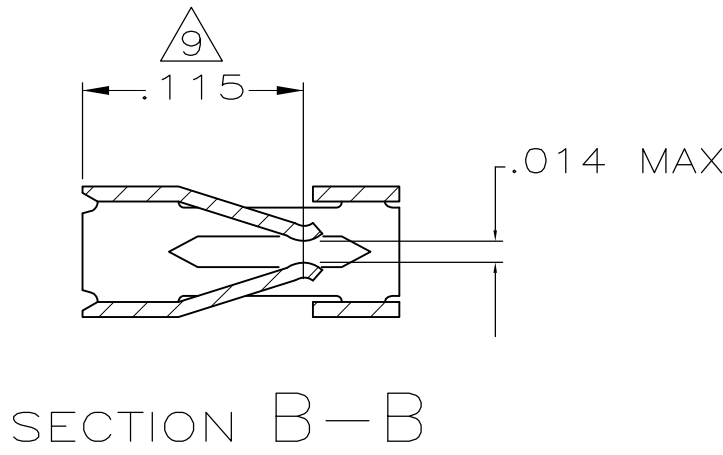
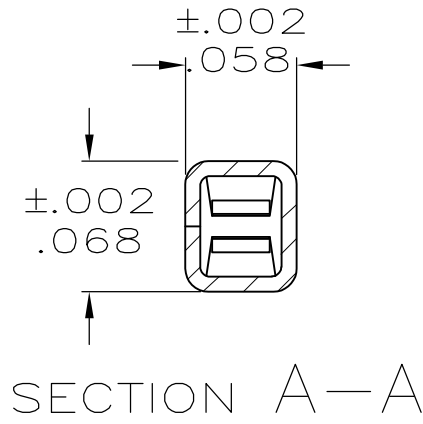
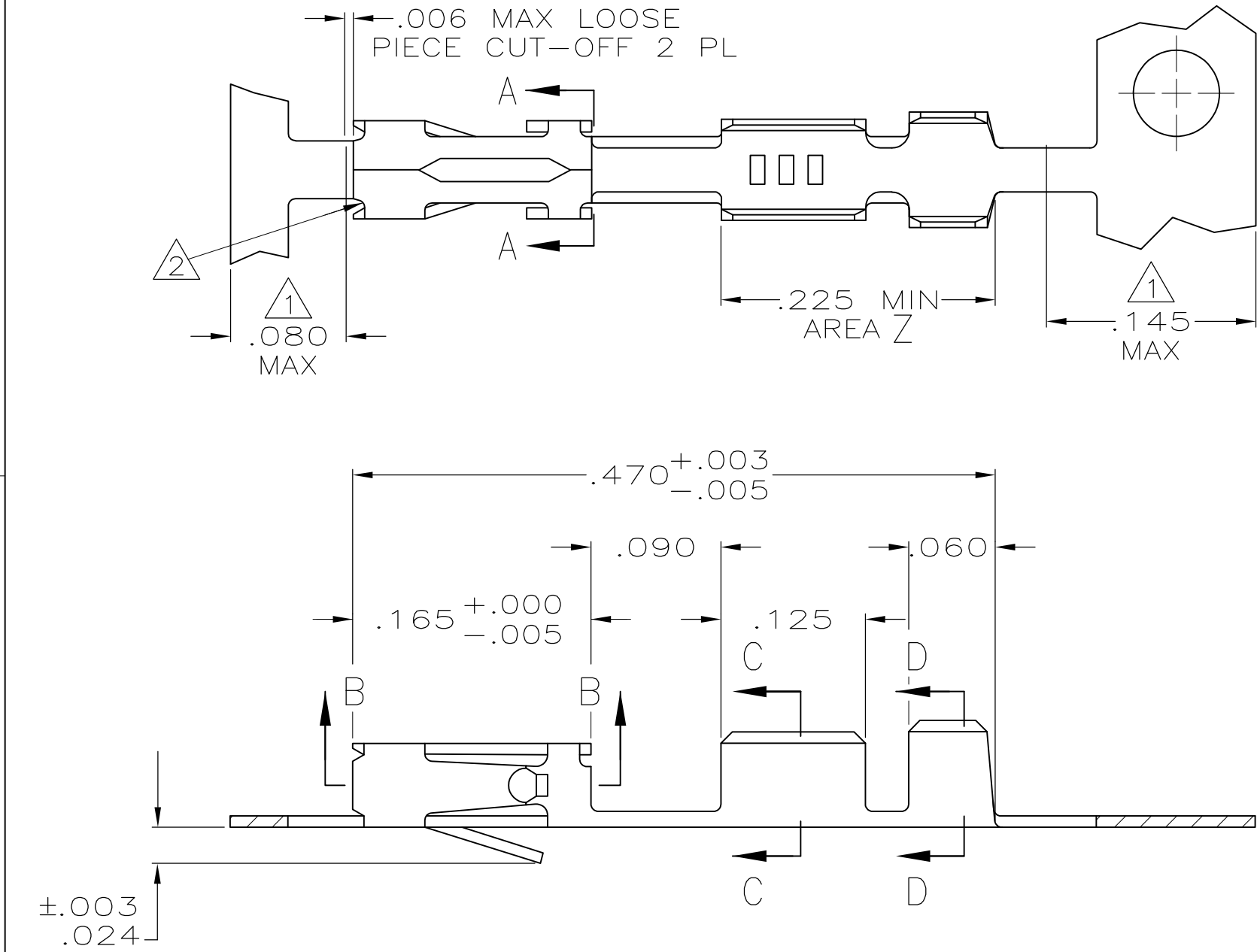




LOC	DIST	REVISIONS					
		P	LTR	DESCRIPTION	DATE	DWN	APVD
AD	00		M1	REVISED PER ECO-11-004917	11MAR11	RK	HMR



- 1 GOLD PLATING IS NOT REQUIRED IN THIS AREA.
- 2 CUT-OUTS ON THE BOX ARE AT MANUFACTURERS OPTION.
- 3 THIS TERMINAL IS REELED FOR THE STANDARD APPLICATOR.
- 4 THIS TERMINAL IS REELED FOR THE MINI APPLICATOR.
- 5 .000015 GOLD ON THE CONTACT AREA, GOLD FLASH ON THE REMAINDER ALL OVER .000050 NICKEL.
- 6 .000030 GOLD OVER .000050 NICKEL.
- 7 .000030 GOLD ON THE CONTACT AREA, GOLD FLASH ON THE REMAINDER ALL OVER .000050 NICKEL.
- 8 .000100-.000200 BRIGHT TIN-LEAD OVER .000050 NICKEL.
- 9 POINT OF MEASUREMENT FOR PLATING THICKNESS (INSIDE BEAMS).
- 10 SHEARED EDGES ARE PERMITTED TO BE UNPLATED.
- 11 .000015 GOLD ON THE CONTACT AREA, .000100-.000200 BRIGHT TIN-LEAD ON AREA Z, ALL OVER .000050 NICKEL.
- 12 .000030 GOLD ON THE CONTACT AREA, .000100-.000200 BRIGHT TIN-LEAD ON AREA Z, ALL OVER .000050 NICKEL.
- 13 .000030 GOLD ON CONTACT AREA, .000100-.000200 TIN ON AREA Z, ALL OVER .000050 NICKEL.
- 14 .000015 GOLD ON CONTACT AREA, .000100-.000200 TIN ON AREA Z, ALL OVER .000050 NICKEL.

4	10	14	2-87195-5	2-87195-4
4	10	13	2-87195-6	2-87195-3
4	10	12	2-87195-1	2-87195-0
4	10	11	1-87195-8	1-87195-7
4	8	8	1-87195-6	1-87195-5
3	8	8	1-87195-6	1-87195-4
4	7	7	1-87195-0	87195-9
3	7	7	1-87195-0	87195-8
4	6	6	87195-7	87195-6
3	6	6	87195-7	87195-5
4	5	5	87195-4	87195-3
3	5	5	87195-4	87195-2
REMARKS		FINISH	LOOSE PIECE PART NUMBER	PART NUMBER

THIS DRAWING IS A CONTROLLED DOCUMENT.		DWN L.D.RINGLEY	1-6-86	 TE Connectivity						
		CHK J.L.GESFORD	1-6-86							
DIMENSIONS: INCHES	TOLERANCES, UNLESS OTHERWISE SPECIFIED:	APVD J. GESFORD	1-6-86	NAME						
	0 PLC ± -	PRODUCT SPEC	CONTACT,MOD IV 1/2, RECEPTACLE, CRIMP							
	1 PLC ± -	108-25,021								
	2 PLC ± -	APPLICATION SPEC								
	3 PLC ± -.005	114-25,003								
4 PLC ± -	ANGLES ± ±	WEIGHT	—	SIZE	CAGE CODE	DRAWING NO	RESTRICTED TO			
MATERIAL	FINISH			A2	00779	C=87195	—			
CU-SN-P, ALLOY	SEE TABLE	CUSTOMER DRAWING		SCALE		10:1	SHEET	1 of 1	REV	M1

Mouser Electronics

Authorized Distributor

Click to View Pricing, Inventory, Delivery & Lifecycle Information:

[TE Connectivity:](#)

[2-87195-6](#)