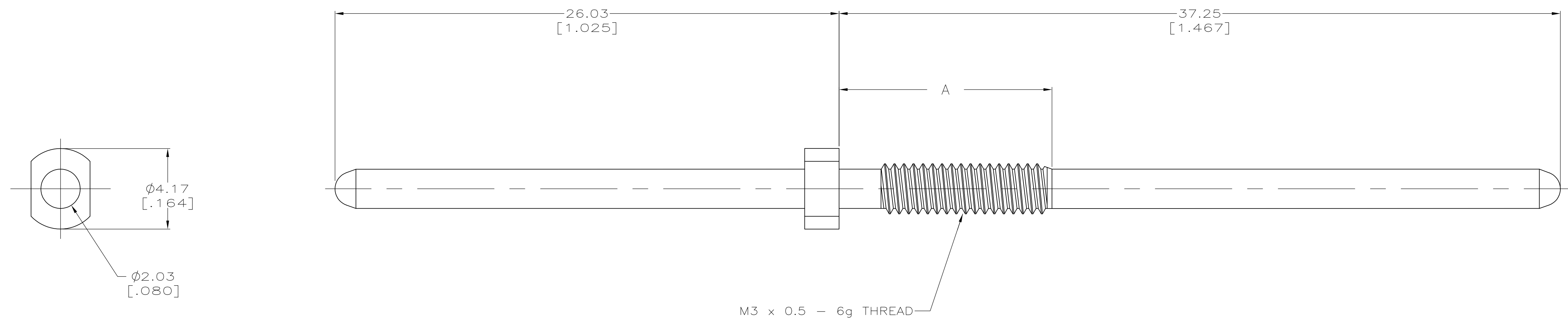


- 1

BRASS PER AMP SPECIFICATION 100-110 1/2 HARD OR  
BRASS PER AMP SPECIFICATION 100-380 1/4 HARD.
- 2

CONTACT MATING AREA MEETS THE PERFORMANCE REQUIREMENTS OF  
TE CONNECTIVITY PRODUCT SPECIFICATION 108-1957; BASED ON  
TELCORDIA GR-1217-CORE, APPLICATIONS IN UNCONTROLLED ENVIRONMENTS.
- 3

RECOMMENDED HOLE SIZE 3.1mm.



THIS DRAWING IS A CONTROLLED DOCUMENT.

DWN  
DK SCHRUM

CHK  
HW ANDREWS

APVD  
HW ANDREWS

PRODUCT SPEC  
---

APPLICATION SPEC  
---

WEIGHT  
---

CUSTOMER DRAWING

25AUG99

NAME  
GUIDE PIN,  
STATIC DISCHARGE

SIZE  
A1

CAGE CODE  
00779

DRAWING NO  
120759

RESTRICTED TO  
---

SCALE  
8:1

SHEET  
1

OF  
1

REV  
B

11.00 [.433]

120759-2

A

PART NUMBER

**TE** TE Connectivity

# Mouser Electronics

Authorized Distributor

Click to View Pricing, Inventory, Delivery & Lifecycle Information:

[TE Connectivity:](#)

[120759-2](#)