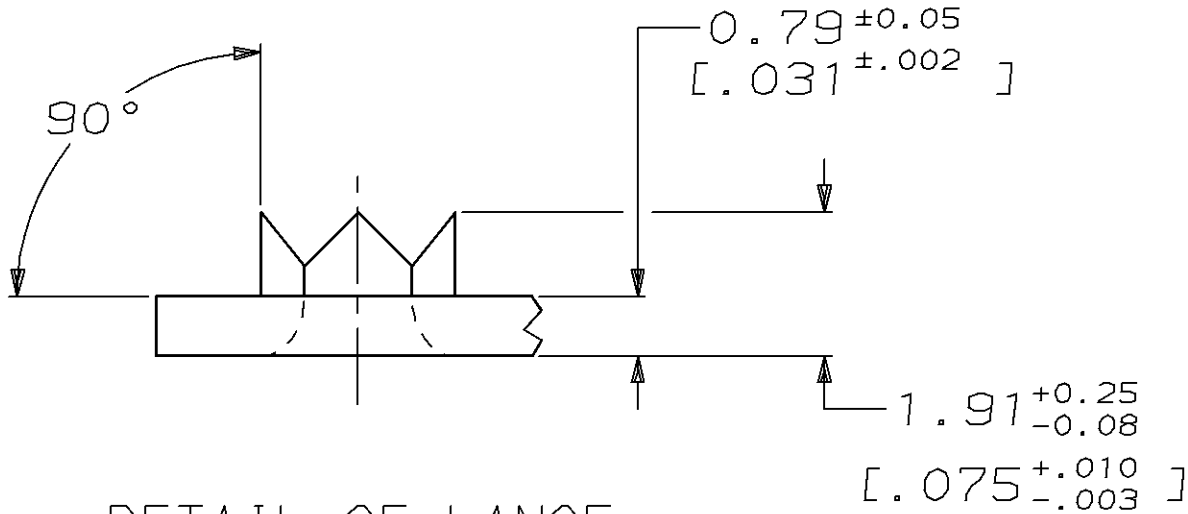
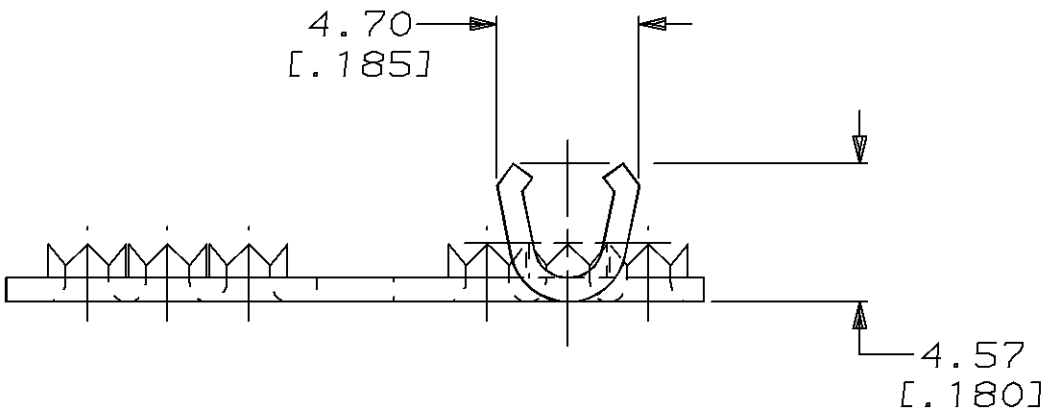
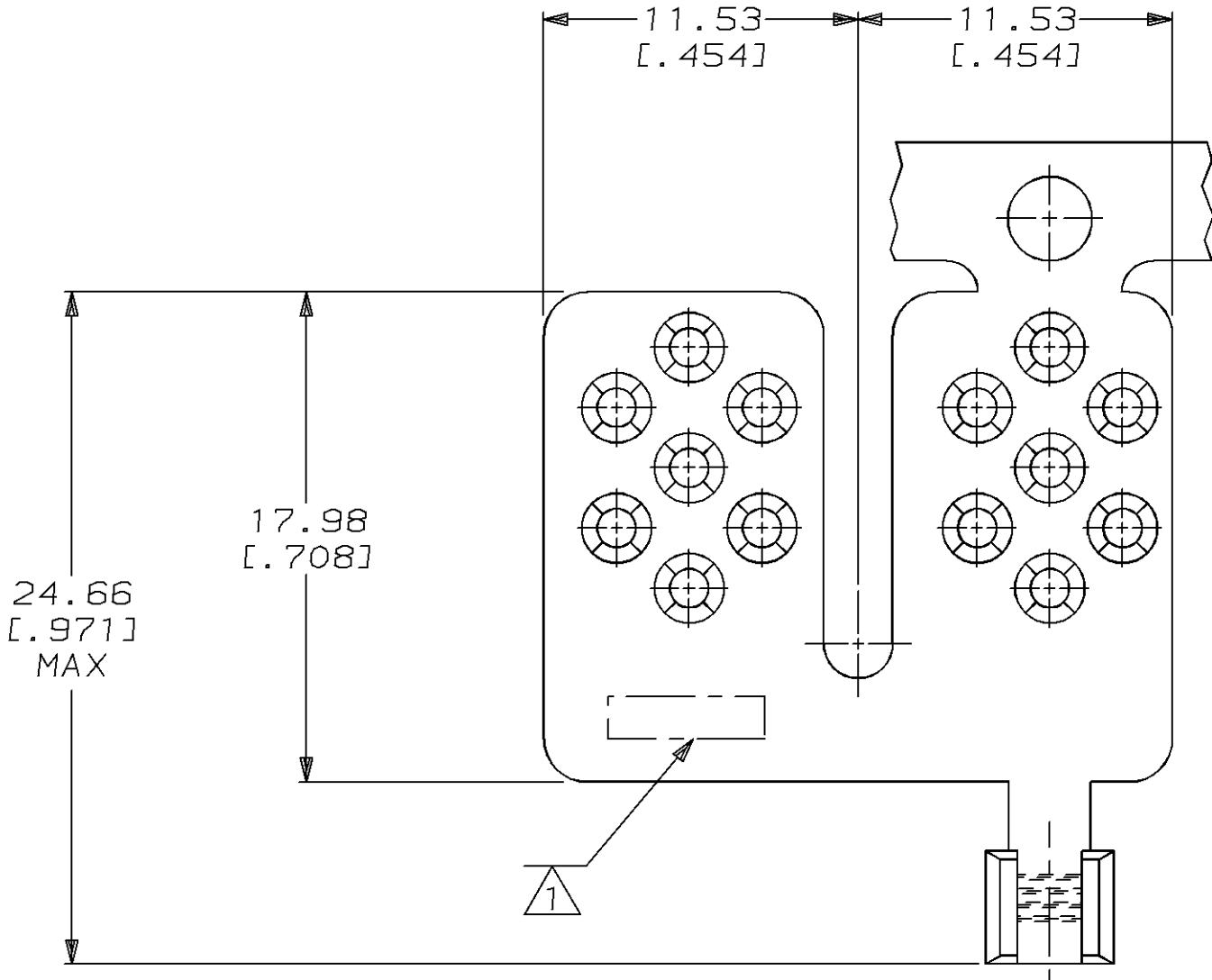


LOC		DIST						REVISIONS		
G		86		P	F	ZONE	LTR	DESCRIPTION	DATE	APPD
							0	RELEASED PER 0720-0052-94	6/16/94	OKS AJK

METRIC

DIMENSIONS LISTED IN mm [ INCHES ]

1

 STAMP AMP APPROX AS SHOWN

DETAIL OF LANCE  
SCALE 10:1

AMP INCORPORATED  
CUSTOMER SERVICE SYSTEMS

FOR ADDITIONAL PRODUCT INFORMATION OR COPIES OF DRAWINGS AND TECHNICAL DOCUMENTS	PRODUCT INFORMATION CENTER 1-800-522-6752
FOR APPLICATION TOOLING INFORMATION	TOOLING ASSISTANCE CENTER 1-800-722-1111
FOR ORDER ENTRY	1-800-526-5142

MAX RECOMMENDED OPERATING  
TEMPERATURE:  
170°C MAX

VOLTAGE RATING:  
NOT APPLICABLE

WIRE CROSS SECTIONAL AREA RANGE:  
1.04-2.62mm² [2,050-5,180] CIR MILS  
SOLID OR STRANDED

THIS DRAWING IS A CONTROLLED DOCUMENT FOR  
AMP INCORPORATED. IT IS SUBJECT TO CHANGE  
AND THE CONTROLLING ENGINEERING ORGANIZATION  
SHOULD BE CONTACTED FOR THE LATEST REVISION.

DO NOT SCALE PRINT.  
UNLESS SPECIFIED  
~~DIMENSIONS IN mm [INCHES]~~  
TOLERANCES ON :  
2 PLC DEC ± -  
3 PLC DEC ± -  
ANGLES ± -  
MATERIAL  
COPPER PER ASTM B-152  
FINISH  
TIN PLATE  
0.00254[.000100] MIN  
THK PER MIL-T-10727

DR 6/16/94 DK SCHRUM	CHK 6/20/94 AJ KAUFMAN
APPD 6/20/94 RE ROSER	APPD 6/20/94 JL MECKLEY
PRODUCT SPEC -	APPLICATION SPEC -
WEIGHT -	

53645-2 PART NO		
<b>AMP</b> AMP Incorporated Harrisburg, PA 17105-3608		
NAME TERMINAL, W/ OPEN BARREL, TAP, TERMI-FOIL™, WIRE SIZE: 16-14 AWG		
SIZE C	CAGE CODE 00779	DRAWING NO C=53645
SCALE 4:1	SHEET 1 OF 1	

# Mouser Electronics

Authorized Distributor

Click to View Pricing, Inventory, Delivery & Lifecycle Information:

[TE Connectivity:](#)

[53645-2](#)