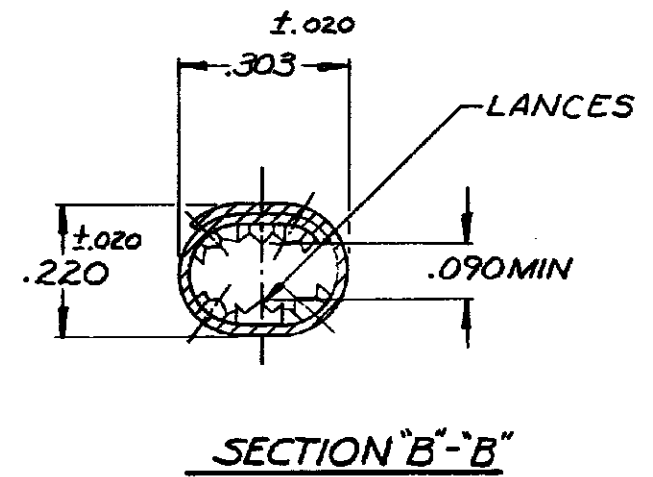
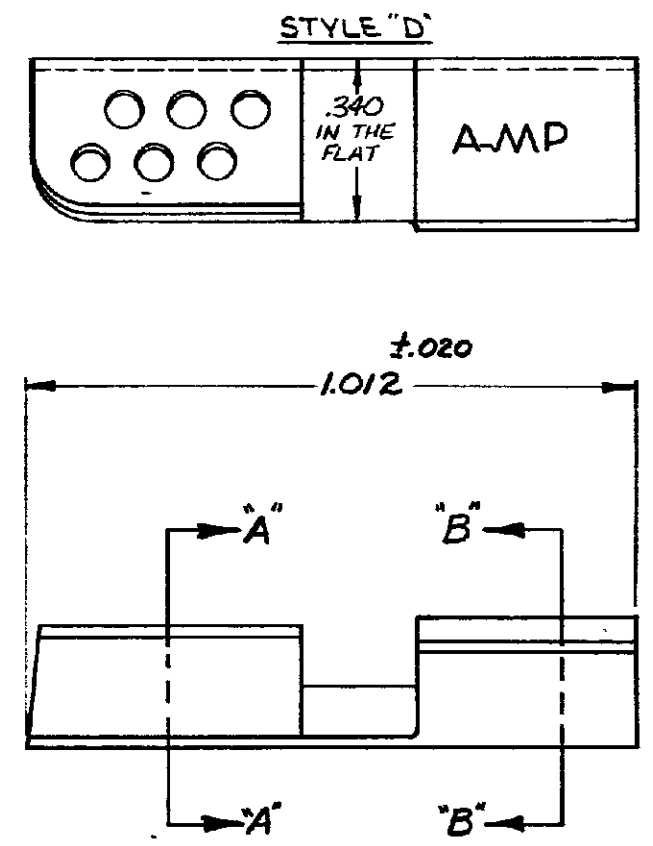
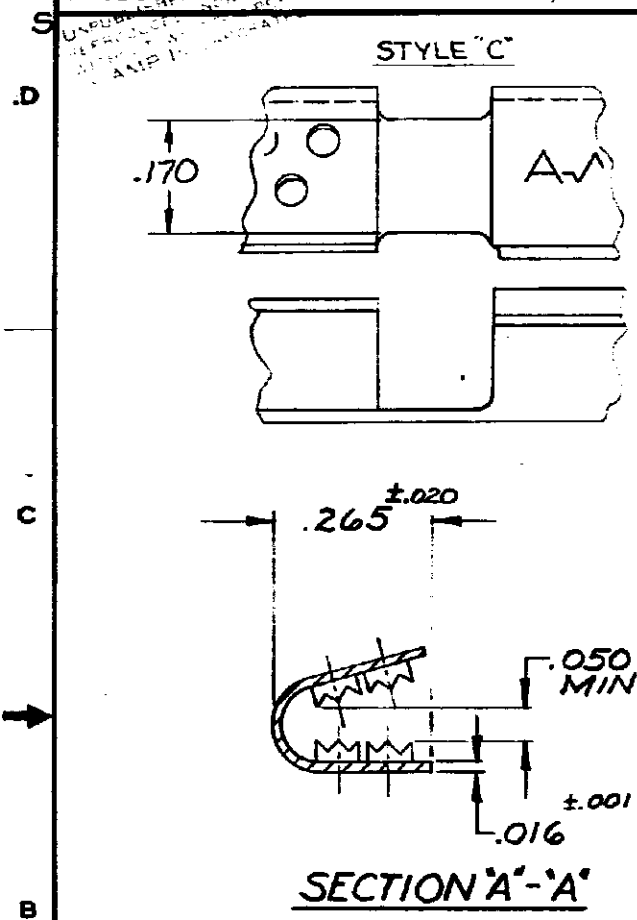


DRAWING MADE IN AMERICAN PROJECTION

© 1965 BY AMP INCORPORATED. ALL RIGHTS RESERVED. AMP PRODUCTS COVERED BY PATENTS AND/OR PATENTS PENDING.

REVISIONS				
ZONE	LTR	DESCRIPTION	DATE	APPROVED
B		NPS 73-0008	7-2-73	<i>Chen</i>
C		REVISED PER ECN P-7615	11/20/75	2-11-26-75



1-332006-2	"D"
1-332006-0	"C"
PART NO.	STYLE

AMP 1470-1 REV (7/68) 4

UNLESS OTHERWISE SPECIFIED DIMENSIONS ARE IN INCHES  
TOLERANCES ON:  
DECIMALS ±.008  
ANGLES ±5°

MATERIAL  
COPPER  
(QQ-C-576)  
TIN PLATE  
(MIL-T-10727)  
0001 MIN THK.

CONTRACT NO. *H*

DR. *Thomas Podes* 7-2-73

CHK *John Greening* 7-2-73

APPD *Abel 7-2-73*

DESIGN APPD

OTHER APPD

<b>AMP</b>		AMP INCORPORATED HARRISBURG, PENNSYLVANIA	
NAME <b>TERMI-FOIL BOND CLIP CMA-6925</b>			
SIZE <b>B</b>	CODE IDENT NO. <b>00779</b>	NUMBER <b>332006</b>	
SCALE <b>4:1</b>		SHEET <b>1 OF 1</b>	

# Mouser Electronics

Authorized Distributor

Click to View Pricing, Inventory, Delivery & Lifecycle Information:

[TE Connectivity:](#)

[1-332006-2](#)