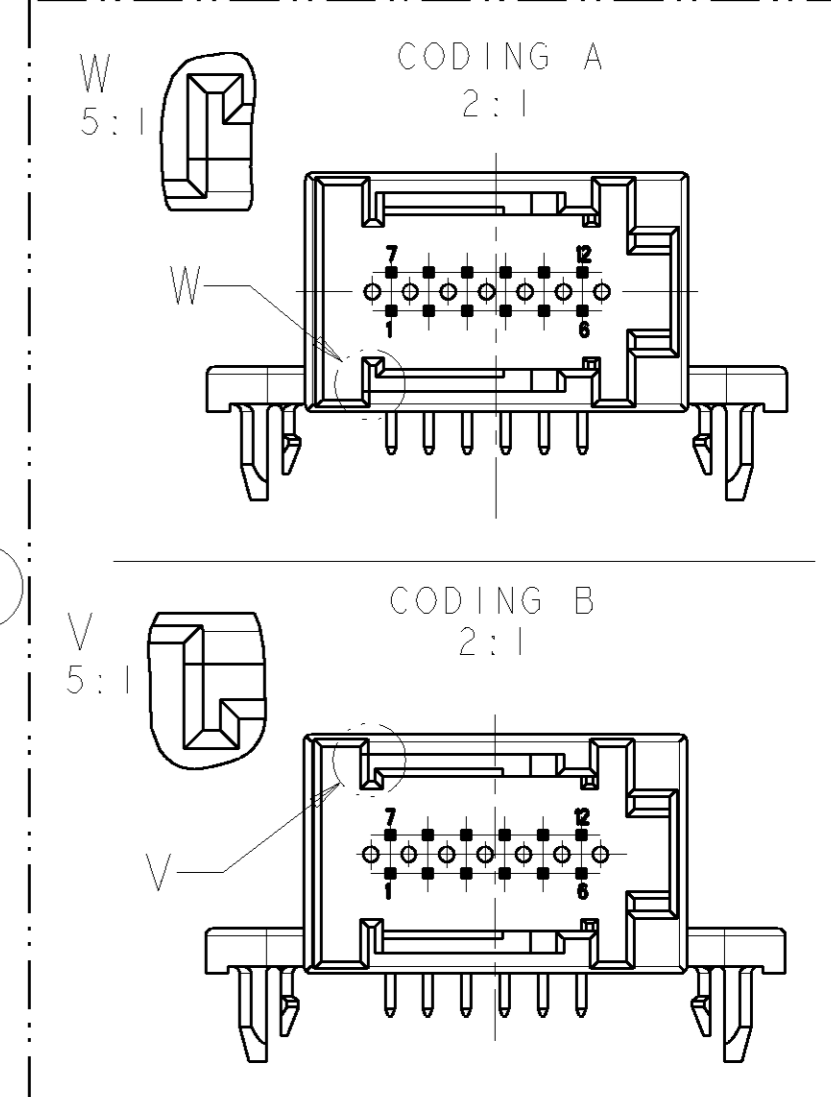
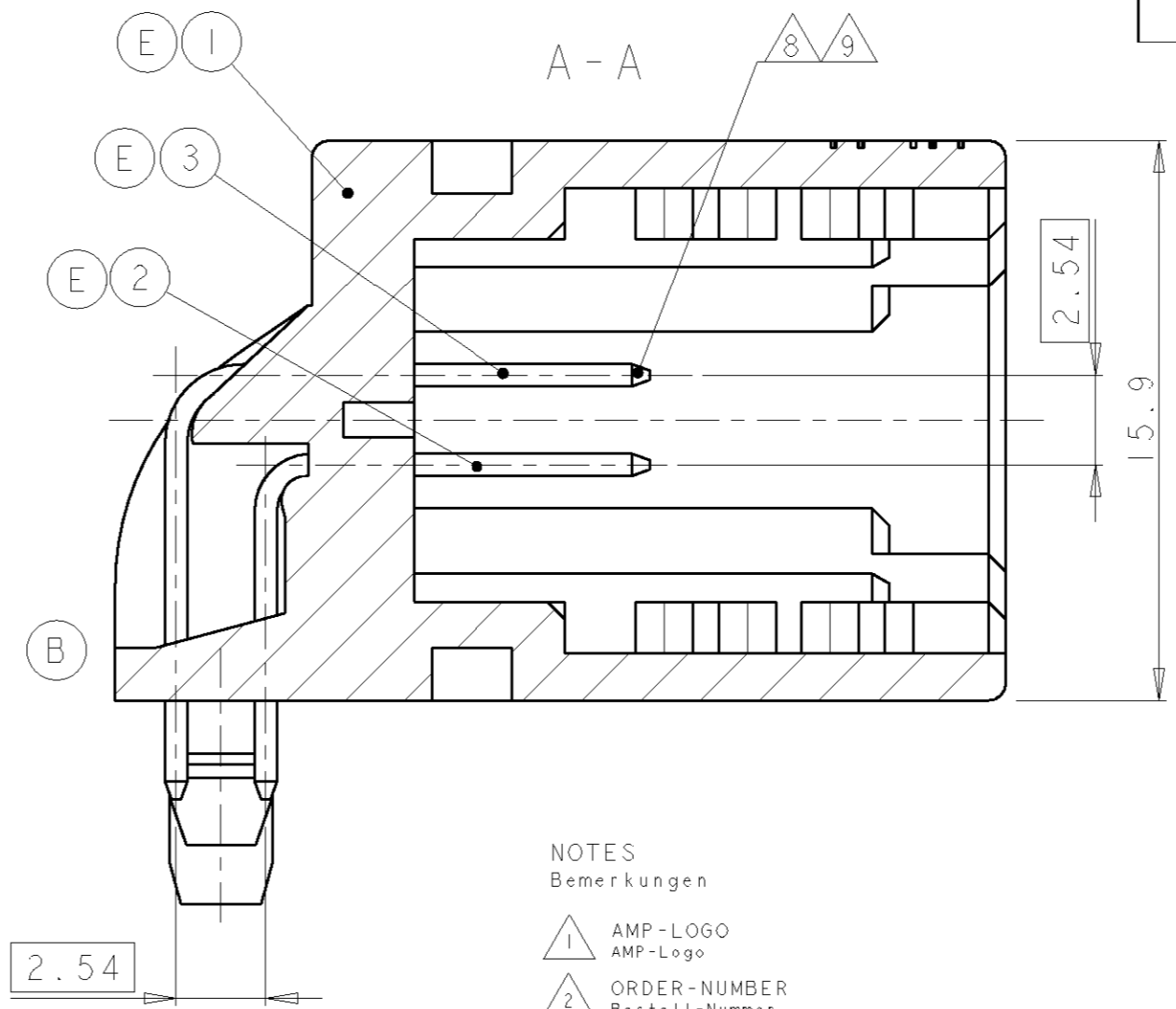
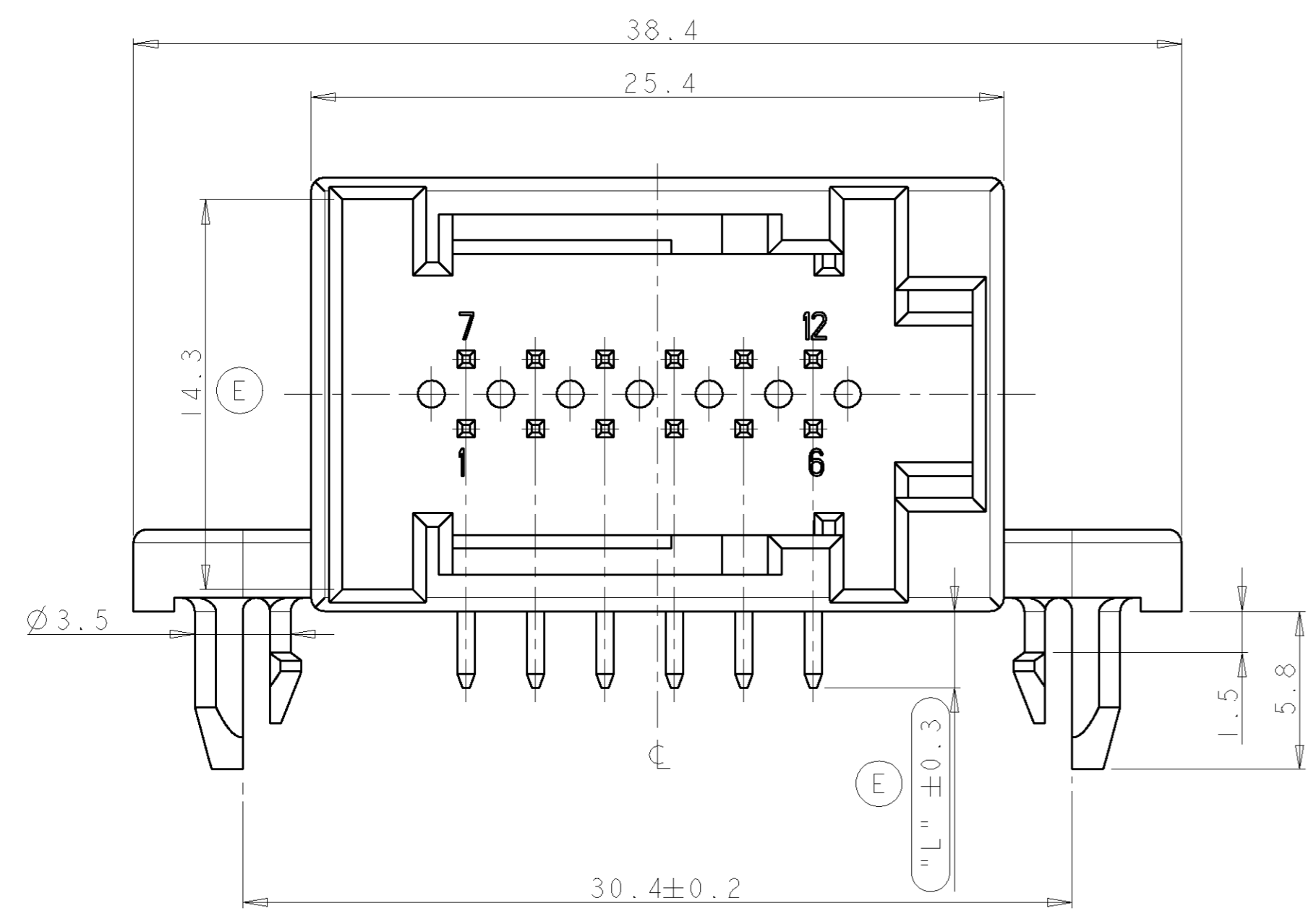


PROJECT NO.  
 B916823  
 A98-52300

| REVISIONS |     |                        |           |     |      |
|-----------|-----|------------------------|-----------|-----|------|
| P         | LTR | DESCRIPTION            | DATE      | DWN | APVD |
| D1        |     | SEE PCN EG00-2505-00-1 | 20OCT2000 | REH | VB   |
| D2        |     | SEE PCN EG00-0134-01-2 | 11JAN2001 | REH | VB   |
| E         |     | SEE PCN EG00-0553-03-2 | 17FEB2003 | LN  | REH  |
| E1        |     | SEE PCN EG00-1054-03-1 | 24MAR2003 | LN  | REH  |



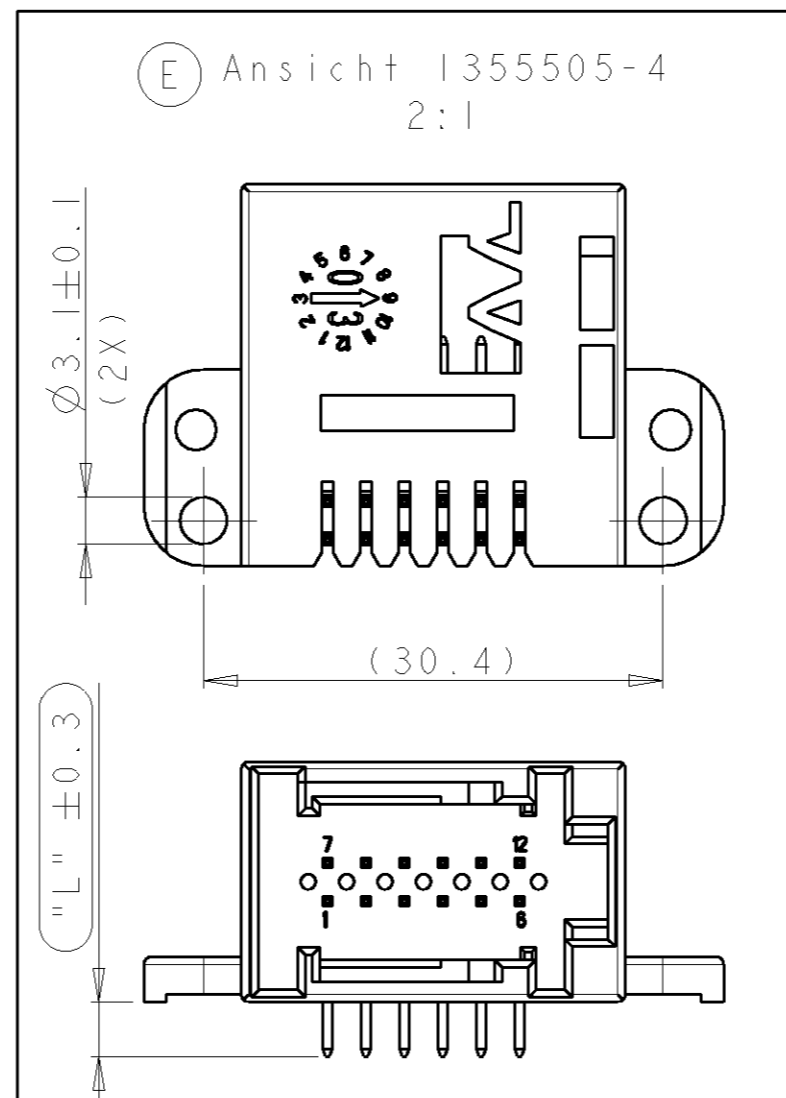
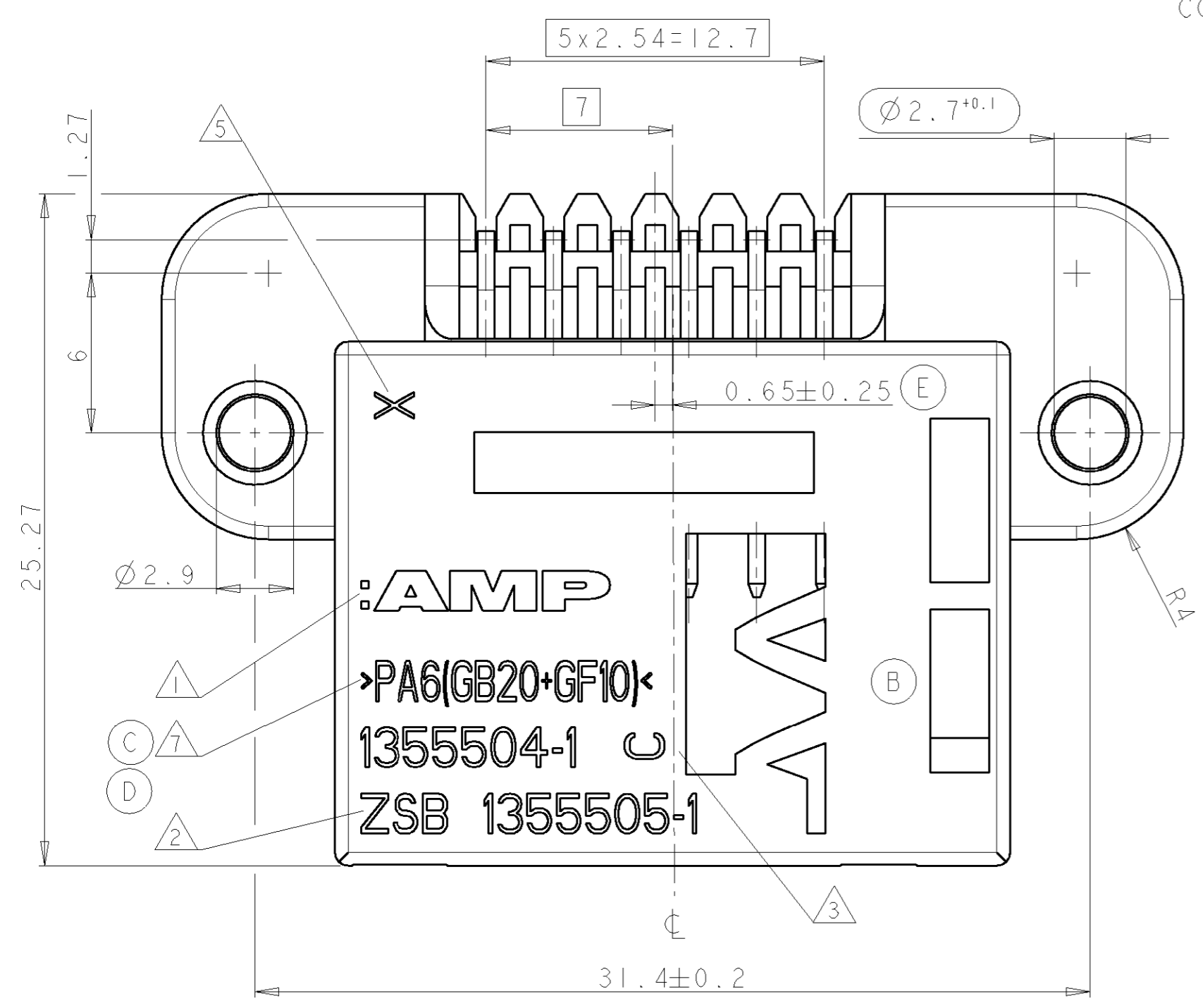
CODING Z AS DRAWN

NOTES  
 Bemerkungen

- 1 AMP-LOGO  
AMP-Logo
- 2 ORDER-NUMBER  
Bestell-Nummer
- 3 REVISIONS-NUMBER  
Werkzeugänderungsindex
- 5 CAVITY MARKING  
Nestmarkierung
- 6 PACKAGING IN LAYERS ACC. TO AMP-SPEC. 107-18032-300  
Lagenverpackung nach AMP-Spez. 107-18032-300
- 7 MATERIAL MARKING  
Werkstoffkennzeichnung
- 8 PIN TIPS ACC. TO TYCO SPEC. 114-18063  
Tabspitzen nach Tyco Spez.
- 9 ELECTRICAL VALUES ACC. TO 114-18021  
elektrische Werte nach

MATING WITH  
 Passend zu

|             |                    |
|-------------|--------------------|
| 929051-1    | - COVER WITH LEVER |
| 967671-1/-3 | - COVER WITH LEVER |
| 968473-1    | - MOS SOCKET HSG.  |



| Part No.  | Rev. Cod. | "L" | Description | Pcs.        | Material | Surface Finish | No.                            |   |
|-----------|-----------|-----|-------------|-------------|----------|----------------|--------------------------------|---|
| 1355505-4 | A         | B   | 3.6         | MODU II PIN | 6        | CuSn6          | TIN PLATED (MIN. THICKN. 2 µm) | 3 |
|           |           |     |             | MODU II PIN | 6        | CuFe2          | TIN PLATED (MIN. THICKN. 1 µm) | 2 |
| 1355505-3 | A         | B   | 2.8         | HOUSING     | 1        | PA6(GB20+GF10) | LIGHTGREY                      | 1 |
|           |           |     |             | MODU II PIN | 6        | CuSn6          | TIN PLATED (MIN. THICKN. 2 µm) | 3 |
| 1355505-2 | A         | A   | 2.8         | MODU II PIN | 6        | CuSn6          | TIN PLATED (MIN. THICKN. 2 µm) | 2 |
|           |           |     |             | HOUSING     | 1        | PA6(GB20+GF10) | BLUE                           | 1 |
| 1355505-1 | D         | Z   | 2.8         | MODU II PIN | 6        | CuSn6          | TIN PLATED (MIN. THICKN. 2 µm) | 3 |
|           |           |     |             | HOUSING     | 1        | PA6(GB20+GF10) | BLACK                          | 1 |
| Assy No.  | Rev. Cod. | "L" | Description | Pcs.        | Material | Surface Finish | No.                            |   |

THIS DRAWING IS A CONTROLLED DOCUMENT FOR TYCO ELECTRONICS CORPORATION. IT IS SUBJECT TO CHANGE AND THE CONTROLLING ENGINEERING ORGANIZATION SHOULD BE CONTACTED FOR THE LATEST REVISION.

DWN: M. Reinhardt 17MAY99  
 CHK: M. Reinhardt 19MAY99  
 APVD: -

AMP Deutschland GmbH  
 D - 63225 Langen

NAME: 12POS. MOS PIN HEADER 90°, ASSY  
 12pol.MOS Stiftleiste 90°, Assy

PRODUCT SPEC: 108-18671-0  
 APPLICATION SPEC: 114-18314-0

SIZE: A2  
 CAGE CODE: 00779  
 DRAWING NO: 1355505  
 RESTRICTED TO: -

CUSTOMER DRAWING  
 SCALE: 5:1  
 SHEET: 1 OF 1  
 REV: E1

# Mouser Electronics

Authorized Distributor

Click to View Pricing, Inventory, Delivery & Lifecycle Information:

[TE Connectivity:](#)

[1355505-1](#)