

N24RF64

Dual Interface RFID 64 Kb EEPROM Tag ISO 15693 RF and I²C Bus Compliant

Description

The N24RF64 is a RFID/NFC tag with a 64 Kb EEPROM device, offering both contactless and contact interface. In addition to the ISO/IEC 15693 radio frequency identification (RFID) interface protocol, the device features an I²C interface to communicate with a microcontroller. The I²C contact interface requires an external power supply.

The 64 Kb EEPROM array is internally organized as 2048 x 32 bits in RF mode and as 8192 x 8 bits when accessed from the I²C interface.

Features

- Contactless Transmission of Data
- ISO 15693 / ISO 18000-3 Mode1 Compliant
 - ♦ Vicinity Range Communication (up to 150 cm)
 - ♦ Air Interface Communication at 13.56 MHz (HF)
 - ♦ To tag: ASK Modulation with 1.65 Kbit/s or 26.48 Kbit/s Data Rate
 - ♦ From Tag: Load Modulation Using Manchester Coding with 423 kHz and 484 kHz Subcarriers in Low (6.6 Kbit/s) or high (26 Kbit/s) Data Rate Mode. Supports the 53 Kbit/s Data Rate with Fast Commands
- Read & Write 32-bit Block Mode
- Anti-collision Support
- Security:
 - ♦ 64-bit Unique Identifier (UID)
 - ♦ Multiple 32-bit Passwords and Lock Feature for Each User Memory Sector
- Supports Fast (400 kHz) and Fast-Plus (1 MHz) I²C Protocol
- 1.8 V to 5.5 V Supply Voltage Range
- 4-Byte Page Write Buffer
- I²C Timeout
- Schmitt Triggers and Noise Suppression Filters on I²C Bus Inputs (SCL and SDA)
- 2048 Blocks x 32 Bits (64 Sectors of 32 Blocks Each): RF Mode
- 8192 x 8 Bits I²C Mode
- 2,000,000 Program/Erase Cycles
- 200 Year Data Retention
- -40°C to +105°C Temperature Range
- SOIC, TSSOP 8-lead Packages
- These Devices are Pb-Free, Halogen Free/BFR Free and are RoHS Compliant*



ON Semiconductor®

www.onsemi.com

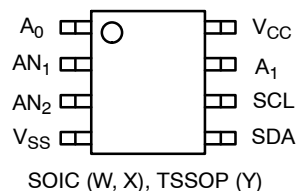


SOIC 8
CASE 751BD



TSSOP8, 4.4x3
CASE 948AL

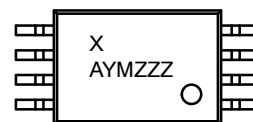
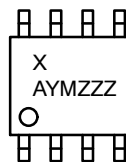
PIN CONFIGURATION



PIN FUNCTION

| Pin Name | Function |
|-----------------|----------------|
| A0, A1 | Device Address |
| SDA | Serial Data |
| SCL | Serial Clock |
| AN1, AN2 | Antenna Coil |
| V _{CC} | Power Supply |
| V _{SS} | Ground |

MARKING DIAGRAMS



X = Specific Device Code
A = Assembly Site Code
Y = Production Year (Last Digit)
M = Production Month Code
ZZZ = Last 3 Characters of Assembly Lot Number

ORDERING INFORMATION

See detailed ordering and shipping information on page 21 of this data sheet.

*For additional information on our Pb-Free strategy and soldering details, please download the ON Semiconductor Soldering and Mounting Techniques Reference Manual, SOLDERRM/D.

N24RF64

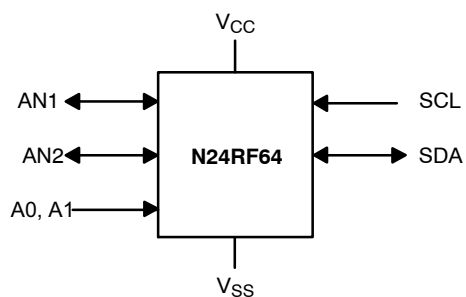


Figure 1. Functional Symbol

Table 1. ABSOLUTE MAXIMUM RATINGS

| Parameter | Rating | Unit |
|--|-------------|------|
| Storage Temperature | -65 to +150 | °C |
| Ambient Operating Temperature | -40 to +105 | °C |
| Voltage on SCL, SDA, A0, A1 and V _{CC} pins with respect to Ground (Note 1) | -0.5 to 6.5 | V |
| RF Input Voltage Peak to Peak Amplitude between AN1 and AN2, VSS pad floating | 28 | V |
| AC Voltage on AN1 or AN2 with respect to GND | -1 to 15 | V |

Stresses exceeding those listed in the Maximum Ratings table may damage the device. If any of these limits are exceeded, device functionality should not be assumed, damage may occur and reliability may be affected.

1. During transitions, the voltage undershoot on any pin should not exceed -1 V for more than 20 ns. Voltage overshoot on the SCL and SDA I²C pins should not exceed the absolute maximum ratings, irrespective of V_{CC}.

Table 2. RELIABILITY CHARACTERISTICS – EEPROM (Note 2)

| Symbol | Parameter | Test Conditions | Max | Unit |
|--------|----------------|---|-----------|-----------------------|
| NEND | Endurance | T _A ≤ 25°C, 1.8 V < V _{CC} < 5.5 V | 2,000,000 | Write Cycles (Note 3) |
| | | T _A = 85°C, 1.8 V < V _{CC} < 5.5 V | 800,000 | |
| | | T _A = 105°C, 1.8 V < V _{CC} < 5.5 V | 300,000 | |
| TDR | Data Retention | T _A = 25°C | 200 | Year |

2. Determined through qualification/characterization.

3. A Write Cycle refers to writing a Byte or a Page.

Table 3. DC OPERATING CHARACTERISTICS – I²C MODE

(V_{CC} = 1.8 V to 5.5 V, T_A = -40°C to +105°C, unless otherwise specified)

| Symbol | Parameter | Test Conditions | | Min | Max | Unit |
|--------------|--|---|--|----------------------|----------------------|------|
| ICCR ICCR | Supply Current (Read Mode) Supply Current (Read Mode) | Read, f _{SCL} = 400 kHz | V _{CC} = 1.8 V | | 0.15 | mA |
| | | | V _{CC} = 2.5 V | | 0.2 | |
| | | | V _{CC} = 5.5 V | | 0.3 | |
| ICCW | Supply Current (Write Mode) | Write Cycle | | | 0.4 | mA |
| ISB1 | Standby Current | V _{IN} = GND or V _{CC} | No RF Field on antenna coil | | 10 | μA |
| | | | Both V _{CC} Supply and RF Field on antenna coil | | 100 | |
| IL | Input Leakage Current (Note 4) | V _{IN} = GND or V _{CC} | | -2 | 2 | μA |
| ILO | Output Leakage Current (SDA) | SDA = Hi-Z, V _{OUT} = GND or V _{CC} | | -2 | 2 | μA |
| VIL1 | Input Low Voltage | V _{CC} ≥ 2.5 V | | -0.5 | 0.3 V _{CC} | V |
| VIH1 | Input High Voltage | V _{CC} ≥ 2.5 V | | 0.7 V _{CC} | V _{CC} +0.5 | V |
| VIL2 | Input Low Voltage | V _{CC} < 2.5 V | | -0.5 | 0.25 V _{CC} | V |
| VIH2 | Input High Voltage | V _{CC} < 2.5 V | | 0.75 V _{CC} | V _{CC} +0.5 | V |
| VOL1 | Output Low Voltage | V _{CC} ≥ 2.5 V, I _{OL} = 3.0 mA | | | 0.4 | V |
| VOL2 | Output Low Voltage | V _{CC} < 2.5 V, I _{OL} = 2.1 mA | | | 0.2 | V |

Product parametric performance is indicated in the Electrical Characteristics for the listed test conditions, unless otherwise noted. Product performance may not be indicated by the Electrical Characteristics if operated under different conditions.

4. When not driven, the A0 and A1 pins are pulled down to GND internally. For improved noise immunity, the internal pull-down is relatively strong as long as the input level is below the trip point of the CMOS input buffer (~0.5 x V_{CC}); therefore the external driver must be able to supply the pull-down current when attempting to drive the input HIGH. To conserve power, as the input level exceeds the trip point of the CMOS input buffer, the strong pull-down is disabled.

Table 4. PIN IMPEDANCE CHARACTERISTICS

| Symbol | Parameter | Conditions | Max | Unit |
|--------------------------|--------------------------------|-----------------------|-----|------|
| C _{IN} (Note 5) | SDA I/O Pin Capacitance | V _{IN} = 0 V | 8 | pF |
| C _{IN} (Note 5) | Input Capacitance (other pins) | V _{IN} = 0 V | 6 | pF |

5. These parameters are tested initially and after a design or process change that affects the parameter according to appropriate AEC-Q100 and JEDEC test methods.

N24RF64

Table 5. AC CHARACTERISTICS – I²C MODE (Note 6)

(V_{CC} = 1.8 V to 5.5 V, T_A = –40°C to +105°C, unless otherwise specified)

| Symbol | Parameter | I ² C Fast | | I ² C Fast Plus | | Unit |
|------------------------------|--|-----------------------|-------|----------------------------|-------|------|
| | | Min | Max | Min | Max | |
| F _{SCL} | Clock Frequency | 25 | 400 | 25 | 1000 | kHz |
| t _{LOW} | Low Period of SCL Clock | 1.3 | 20000 | 0.45 | 20000 | μs |
| t _{HIGH} | High Period of SCL Clock | 0.6 | 20000 | 0.40 | 20000 | μs |
| t _{SU:STA} | START Condition Setup Time | 0.6 | | 0.25 | | μs |
| t _{HD:STA} | START Condition Hold Time | 0.6 | 20000 | 0.25 | 20000 | μs |
| t _{HD:DAT} | Data In Hold Time | 0 | | 0 | | μs |
| t _{SU:DAT} | Data In Setup Time | 100 | | 50 | | ns |
| t _R (Note 7) | SDA and SCL Rise Time | 20 | 300 | 20 | 100 | ns |
| t _F (Note 7) | SDA and SCL Fall Time | 20 | 300 | 20 | 100 | ns |
| t _{SU:STO} | STOP Condition Setup Time | 0.6 | | 0.25 | | μs |
| t _{BUF} | Bus Free Time Between STOP and START | 1.3 | | 0.5 | | μs |
| t _{AA} | SCL Low to Data Out Valid | | 0.9 | | 0.4 | μs |
| t _{DH} | Data Out Hold Time | 100 | | 50 | | ns |
| T _i (Note 7) | Noise Pulse Filtered at SCL and SDA Inputs | | 50 | | 50 | ns |
| t _{WR} | Write Cycle Time | | 5 | | 5 | ms |
| t _{PU} (Notes 7, 8) | Power-up to Ready Mode | | 1 | | 1 | ms |

Product parametric performance is indicated in the Electrical Characteristics for the listed test conditions, unless otherwise noted. Product performance may not be indicated by the Electrical Characteristics if operated under different conditions.

6. Test conditions according to “AC Test Conditions” table.

7. Tested initially and after a design or process change that affects this parameter.

8. t_{PU} is the delay between the time V_{CC} is stable and the device is ready to accept commands.

Table 6. AC TEST CONDITIONS

| Parameter | Condition |
|---------------------------|---|
| Input Levels | 0.2 x V _{CC} to 0.8 x V _{CC} |
| Input Rise and Fall Times | ≤ 50 ns |
| Output Reference Levels | 0.5 x V _{CC} |
| Output Load | Current Source: I _{OL} = 3 mA (V _{CC} ≥ 2.5 V); I _{OL} = 1 mA (V _{CC} < 2.5 V); C _L = 100 pF |

N24RF64

Table 7. RF CHARACTERISTICS (Notes 9, 10) ($T_A = -40^{\circ}\text{C}$ to $+105^{\circ}\text{C}$, unless otherwise specified)

| Symbol | Parameter | Test Conditions | Min | Typ | Max | Unit |
|---------------------------------|---|--|--------|--------|--------|---------------|
| f_{CC} | External RF signal frequency | | 13.553 | 13.56 | 13.567 | MHz |
| H_{ISO} | Operating field | | 150 | | 5000 | mA/m |
| MI_{Carrier} (10%) | 10% Carrier Modulation Index $MI = (a-b) / (a+b)$ | 150 mA/m $< H_{\text{ISO}}$ $< 1000 \text{ mA/m}$ | 10 | | 30 | % |
| | | H_{ISO} $> 1000 \text{ mA/m}$ | 15 | | 30 | |
| $t_{1:10\%}$ | 10% Fall and Low Time | $t_1 = t_2$ | 6.0 | | 9.44 | us |
| $t_{2:10\%}$ | 10% Minimum Low Time | $t_1 = 9.44 \mu\text{s}$ | 4.5 | | t_1 | us |
| $t_{3:10\%}$ | 10% Rise Time | $t_1 = 9.44 \mu\text{s}$ | 0 | | 4.5 | us |
| MI_{Carrier} (100%) | 100% Carrier Modulation Index | $MI = (a-b) / (a+b)$ | 95 | | 100 | % |
| $t_{1:100\%}$ | 100% Fall and Low Time | $t_1 = t_2$ | 6.0 | | 9.44 | μs |
| $t_{2:100\%}$ | 100% Minimum Pulse Width Low Time | $t_1 = 9.44 \mu\text{s}$ | 2.1 | | t_1 | μs |
| $t_{3:100\%}$ | 100% Rise Time | $t_1 = 9.44 \mu\text{s}$ | 0 | | 3 | μs |
| $t_{4:100\%}$ | 100% Rise Time to 60% of Amplitude | | 0 | | 0.8 | μs |
| $t_{\text{MIN C-D}}$ | Minimum delay from Carrier generation to first Data | 150 mA/m $< H_{\text{ISO}}$ $< 1000 \text{ mA/m}$ | | | 1 | ms |
| | | $H_{\text{ISO}} > 1000 \text{ mA/m}$ | | | 2 | |
| f_{SH} | Subcarrier Frequency High | $f_{\text{CC}}/32$ | | 423.75 | | kHz |
| f_{SL} | Subcarrier Frequency Low | $f_{\text{CC}}/28$ | | 484.28 | | kHz |
| t_{RESP} | N24RF64 Tag Response Time | 4352/FS | 318.4 | 320.9 | 323.5 | μs |
| t_{WRF} | RF Write Time (with internal Verify) | 78080/FS | 5.753 | 5.758 | 5.763 | ms |
| C_{TUN} | Internal Tuning Capacitor (TSSOP-8) (Note 11) | $f = 13.56 \text{ MHz};$ $V_{\text{ac0}} - V_{\text{ac1}} = 1 \text{ Vp-p}$ | | 26 | | pF |
| $V_{\text{MAX-1}}$ | RF Input Voltage between AN1 and AN2 (peak to peak), V_{SS} pad floating (Note 11) | | | | 22 | V |
| $V_{\text{MAX-2}}$ | AC voltage on AN1 or AN2 with respect to GND (Note 11) | | -1 | | 11 | V |
| $V_{\text{MIN-1}}$ | RF Input Voltage between AN1 and AN2 (peak to peak), V_{SS} pad floating (Note 11) | | | 4 | | V |
| $V_{\text{MIN-2}}$ | AC voltage on AN1 or AN2 with respect to GND (Note 11) | | | 2.1 | | V |
| V_{BACK} | Backscattered Level (ISO Test) | ISO10373-7 | 10 | | | mV |
| $T_{\text{RF-OFF}}$ | RF Off Time | Chip reset | 2 | | | ms |

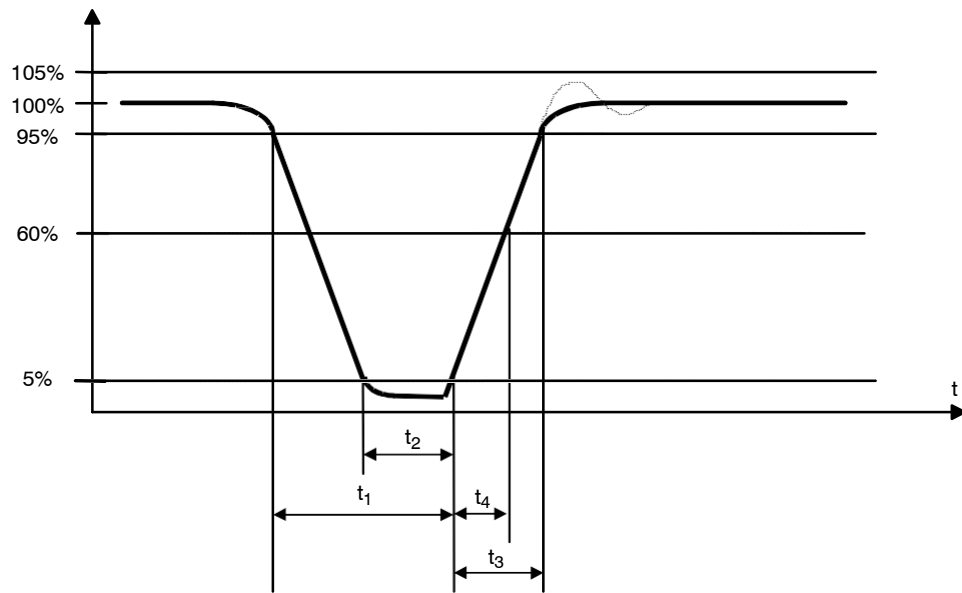
9. Characterized only.

10. All measurements performed on an antenna with the following characteristics:

- External size: 72 mm x 42 mm
- Number of turns: 7
- Antenna is printed on the PCB plated with 35 μm of Cooper
- Track width: 0.8 mm
- Space: 0.5 mm
- Coil: 5 μH

11. Characterized at room temperature only.

N24RF64



The clock recovery must be operational after t_4 max.

Figure 2. 100% Modulation Waveform

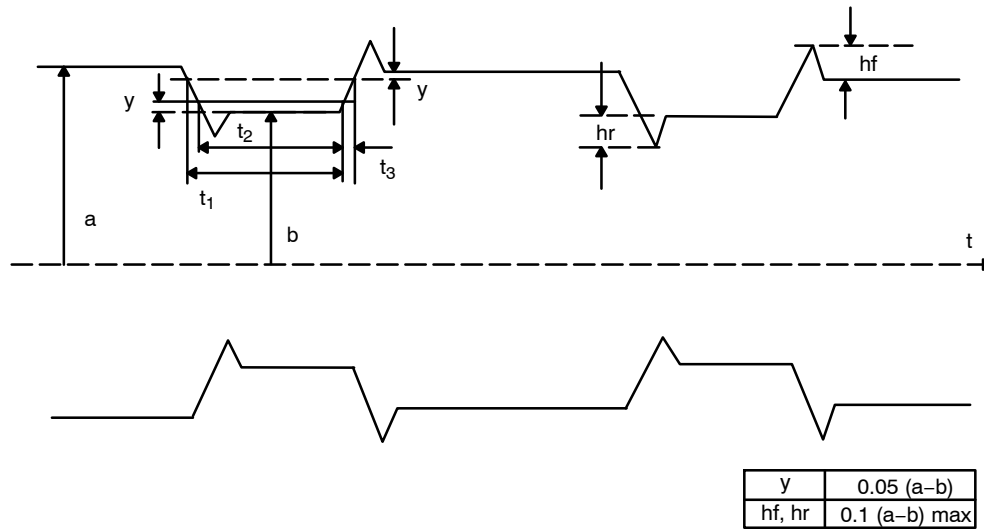


Figure 3. 10% Modulation Waveform

Power-On Reset (POR)

Each N24RF64 incorporates Power-On Reset (POR) circuitry which protects the internal logic against powering up in the wrong state. The device will power up into Standby mode after V_{CC} exceeds the POR trigger level and will power down into Reset mode when V_{CC} drops below the

POR trigger level. This bi-directional POR behavior protects the device against ‘brown-out’ failure following a temporary loss of power.

Pin Description

- **SCL:** The Serial Clock input pin accepts the clock signal generated by the Master
- **SDA:** The Serial Data I/O pin accepts input data and delivers output data. In transmit mode, this pin is open drain. Data is acquired on the positive edge, and is delivered on the negative edge of SCL
- **A₀, A₁:** The Address inputs set the device address that must be matched by the corresponding Slave address bits. The Address inputs are hard-wired HIGH or LOW allowing for up to four devices to be used (cascaded) on the same bus. When left floating, these pins are pulled LOW internally
- **AN₁, AN₂:** These inputs are used to connect the device to an external antenna. The coil is used to power and access the device through the ISO 15693 and ISO 18000-3 mode 1 RF protocols

Functional Description

The N24RF64 is a dual interface RFID/NFC tag with 64 Kb EEPROM.

The device follows the ISO 15693 and ISO 18000-3 mode 1 standard for the radio frequency power and signal interface via the 13.56 MHz carrier. When connected to an antenna coil, no external power supply is required, as the operating power is derived from the RF energy. The communication from the RF Reader to the N24RF64 tag takes place using the ASK modulation with a 1.65 Kb/s data rate using the 1/256 pulse coding or a data rate of 26.48 Kb/s using the 1/4 pulse coding. The communication from the EEPROM tag to the RF reader takes place via load modulation using Manchester coding with 423 kHz and 484 kHz subcarrier frequencies at 6.62 Kb/s or 26.48 Kb/s data rate. The device supports also the 53 Kb/s fast mode.

The N24RF64 supports the Inter-Integrated Circuit (I²C) Bus protocol. The protocol relies on the use of a Master device, which provides the clock and directs bus traffic and

Slave devices which execute requests. The N24RF64 operates as a Slave device with a 4-bit device identifier code (1010b) according to the I²C standard definition.

Memory Organization

In the RF mode, the user memory area is organized into 64 sectors of 32 blocks each for a total of 2048 blocks x 32 bits. The memory access from the I²C interface is organized as 8192 x 8 bits, divided into 64 sectors of 128 bytes each. The user and system memory organization is shown in Figure 4.

Each memory sector can be individually read and/or write protected using a specific password. The N24RF64 provides four 32-bit blocks to store three RF password and one I²C password codes.

In RF mode, the read and write access is done by 32-bit block. Read and Write access is controlled by a Sector Security Status (SSS) byte which includes 5 significant bits: Sector Lock bit, two Read / Write protection bits and two Password Control bits.

In I²C mode, a sector has 128 bytes that can be individually accessed for Read and Write. Each sector can be protected against write operations using the I²C-Write_Lock bit from the 16-bit block area.

The N24RF64 features a 64-bit block to store the 64-bit Unique Identifier (UID) per the ISO 15963 requirements. The UID value is written by ON Semiconductor during manufacturing and it is used during the anti-collision sequence.

The system memory area also includes the application family identifier (AFI) and a data storage family identifier (DSFID) used in the anti-collision algorithm.

The access to the user memory area requires the A2 bit from the Slave address byte set to “0” (Figure 5). All system memory blocks are accessed with A2 bit set to “1”.

Unique Identifier

The N24RF is programed at the factory with a 64-bit unique identifier. The UID conforms to ISO 15693 / ISO 18000 and is read-only. The UID is comprised of:

- Eight MSBs with a value of 0xE0
- IC manufacturer code for ON Semiconductor 0x67
- Unique 48 bit serial number

| MSB | | | | |
|------|----|------|----|----------------------|
| 63 | 56 | 55 | 48 | 47 |
| 0 | | | | |
| 0xE0 | | 0x67 | | Unique serial number |

Table 8.

| I ² C Byte Address | | Bits [31:24] | Bits [23:16] | Bits [15:8] | Bits [7:0] |
|-------------------------------|-----|--------------|--------------|--------------|--------------|
| A2=1 | 0 | SSS 3 (00h) | SSS 2 (00h) | SSS 1 (00h) | SSS 0 (00h) |
| A2=1 | 4 | SSS 7 (00h) | SSS 6 (00h) | SSS 5 (00h) | SSS 4 (00h) |
| A2=1 | ... | ... | ... | ... | ... |
| A2=1 | 56 | SSS 59 (00h) | SSS 58 (00h) | SSS 57 (00h) | SSS 56 (00h) |
| A2=1 | 60 | SSS 63 (00h) | SSS 62 (00h) | SSS 61 (00h) | SSS 60 (00h) |

Table 8. (continued)

| I ² C Byte Address | | Bits [31:24] | Bits [23:16] | Bits [15:8] | Bits [7:0] |
|-------------------------------|------|---|---|---|---|
| A2=1 | 2048 | I ² C Write Lock [31:24] (00h) | I ² C Write Lock [23:16] (00h) | I ² C Write Lock [15:8] (00h) | I ² C Write Lock [7:0] (00h) |
| A2=1 | 2052 | I ² C Write Lock [63:56] (00h) | I ² C Write Lock [55:48] (00h) | I ² C Write Lock [47:40] (00h) | I ² C Write Lock [39:32] (00h) |
| A2=1 | 2304 | I ² C password (0000 0000h) | | | |
| A2=1 | 2308 | RF password 1 (0000 0000h) | | | |
| A2=1 | 2312 | RF password 2 (0000 0000h) | | | |
| A2=1 | 2316 | RF password 3 (0000 0000h) | | | |
| A2=1 | 2320 | DSFID (FFh) | AFI (00h) | ON reserved | ON reserved |
| A2=1 | 2324 | UID | UID | UID | UID |
| A2=1 | 2328 | UID (E0h) | UID (67h) | UID | UID |
| A2=1 | 2332 | Mem Size (03 07FFh) | | | IC Ref (6Ah) |

| Sector | Area | Sector Security Status |
|--------|---|------------------------|
| 0 | 1 Kbit EEPROM Sector | 5 bits |
| 1 | 1 Kbit EEPROM Sector | 5 bits |
| 2 | 1 Kbit EEPROM Sector | 5 bits |
| 3 | 1 Kbit EEPROM Sector | 5 bits |
| ... | | |
| 60 | 1 Kbit EEPROM Sector | 5 bits |
| 61 | 1 Kbit EEPROM Sector | 5 bits |
| 62 | 1 Kbit EEPROM Sector | 5 bits |
| 63 | 1 Kbit EEPROM Sector | 5 bits |
| | I ² C Password | System |
| | RF Password 1 | System |
| | RF Password 2 | System |
| | RF Password 3 | System |
| | 8-bit DSFID | System |
| | 8-bit AFI | System |
| | 64-bit UID | System |
| | 64-bit I ² C Write Lock bits | System |
| | 320-bit SSS | System |

Figure 4. Memory Organization

Sector Security Status

The five Sector Security Status bits are organized as follows:

| b4 | b3 | b2 | b1 | b0 |
|-----------------------|----|----------------------------|----|-------------|
| Password control bits | | Read/Write Protection bits | | Sector Lock |

The Sector Lock bit enables (1) or disables (0) the sector protection. The password control bits determine whether and which password protects the sector. The read/write protection bits determine whether reading and/or writing the sector is permitted. (See table below for combinations.)

| Sector Lock (b0) | b2, b1 | Sector Access When Password Presented | | Sector Access When Password Not Presented | |
|------------------|--------|---------------------------------------|----------|---|----------|
| 0 | xx | Read | Write | Read | Write |
| 1 | 00 | Read | Write | Read | No Write |
| 1 | 01 | Read | Write | Read | Write |
| 1 | 10 | Read | Write | No Read | No Write |
| 1 | 11 | Read | No Write | No Read | No Write |

| b4 | b0 |
|--------|----------------------------------|
| b4, b3 | Password |
| 00 | Sector not protected by password |
| 01 | Sector protected by Password 1 |
| 10 | Sector protected by Password 2 |
| 11 | Sector protected by Password 3 |

I²C Bus Protocol

The 2-wire I²C bus consists of two lines, SCL and SDA, connected to the V_{CC} supply via pull-up resistors. The Master provides the clock to the SCL line, and either the Master or the Slaves drive the SDA line. A '0' is transmitted by pulling a line LOW and a '1' by letting it stay HIGH. Data transfer may be initiated only when the bus is not busy (see AC Characteristics). During data transfer, SDA must remain stable while SCL is HIGH.

START/STOP Condition

An SDA transition while SCL is HIGH creates a START or STOP condition (Figure 5). The START consists of a HIGH to LOW SDA transition, while SCL is HIGH. Absent the START, a Slave will not respond to the Master. The STOP completes all commands, and consists of a LOW to HIGH SDA transition, while SCL is HIGH.

Device Addressing

The Master addresses a Slave by creating a START condition and then broadcasting an 8-bit Slave address. For the N24RF64, the first four bits of the Slave address are set to 1010. The A2 bit is used to control the access to the user or system memory area. The A1 and A0 bits must match the

logic state of the similarly named input pins. The R/\overline{W} bit tells the Slave whether the Master intends to read (1) or write (0) data (Figure 6).

Acknowledge

During the 9th clock cycle following every byte sent to the bus, the transmitter releases the SDA line, allowing the receiver to respond. The receiver then either acknowledges (ACK) by pulling SDA LOW, or does not acknowledge (NoACK) by letting SDA stay HIGH (Figure 7). Bus timing is illustrated in Figure 8.

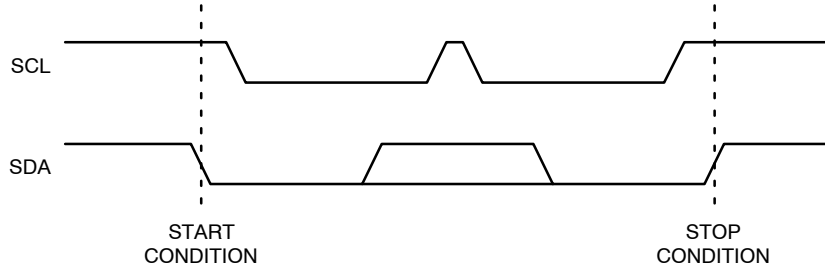
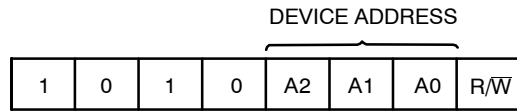


Figure 5. Slave Address Bits



NOTE: A2 bit is used to control the memory addressing: A2 = 0: User memory area; A2 = 1: System memory area
A1, A0 bits must match the logic state of the similarly named pins.

Figure 6. Slave Address Bits

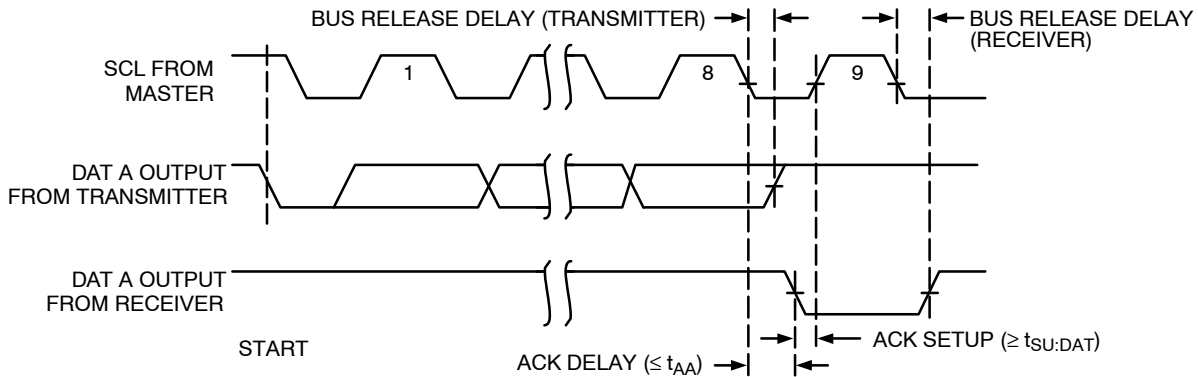


Figure 7. Acknowledge Timing

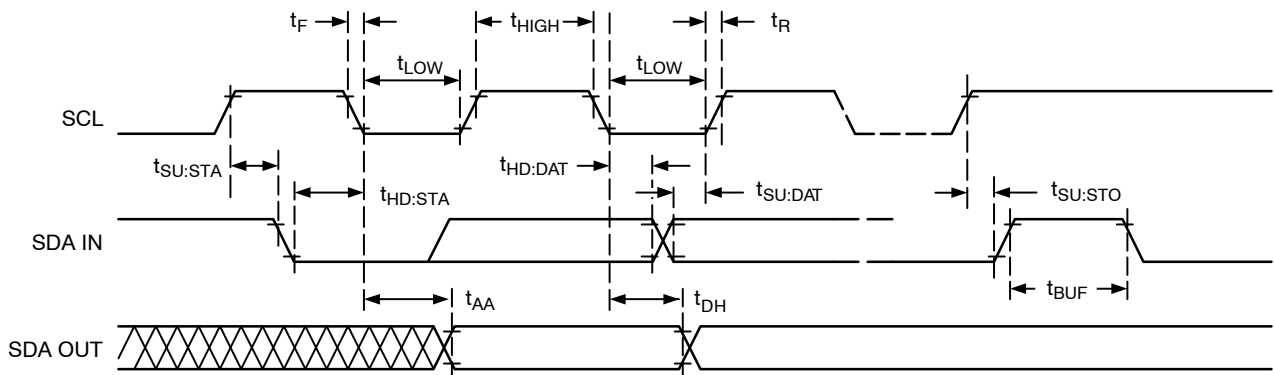


Figure 8. Bus Timing

WRITE OPERATIONS

Byte Write

To write data to memory, the Master creates a START condition on the bus and then broadcasts a Slave address with the R/\overline{W} bit set to '0'. The Master then sends two address bytes and a data byte and concludes the session by creating a STOP condition on the bus. The Slave responds with ACK after every byte sent by the Master (Figure 9). The STOP starts the internal Write cycle, and while this operation is in progress (t_{WR}), the SDA output is tri-stated and the Slave does not acknowledge the Master (Figure 10).

Page Write

The Byte Write operation can be expanded to Page Write, by sending more than one data byte to the Slave before issuing the STOP condition (Figure 11). Up to 4 distinct data bytes can be loaded into the internal Page Write Buffer starting at the address provided by the Master. The page address is latched, and as long as the Master keeps sending

data, the internal byte address is incremented up to the end of page, where it then wraps around (within the page). New data can therefore replace data loaded earlier. Following the STOP, data loaded during the Page Write session will be written to memory in a single internal Write cycle (t_{WR}).

Acknowledge Polling

As soon (and as long) as internal Write is in progress, the Slave will not acknowledge the Master. This feature enables the Master to immediately follow-up with a new Read or Write request, rather than wait for the maximum specified Write time (t_{WR}) to elapse. Upon receiving a NoACK response from the Slave, the Master simply repeats the request until the Slave responds with ACK.

The remainder of the instruction is identical to a normal Page Write.

Delivery State

The N24RF64 is shipped erased, i.e., all bytes are FFh.

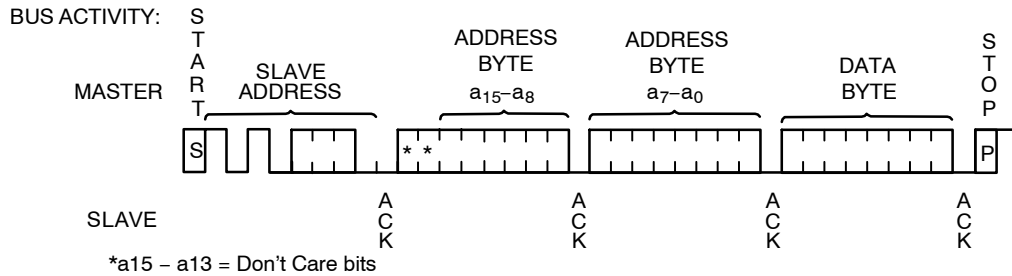


Figure 9. Byte Write Sequence

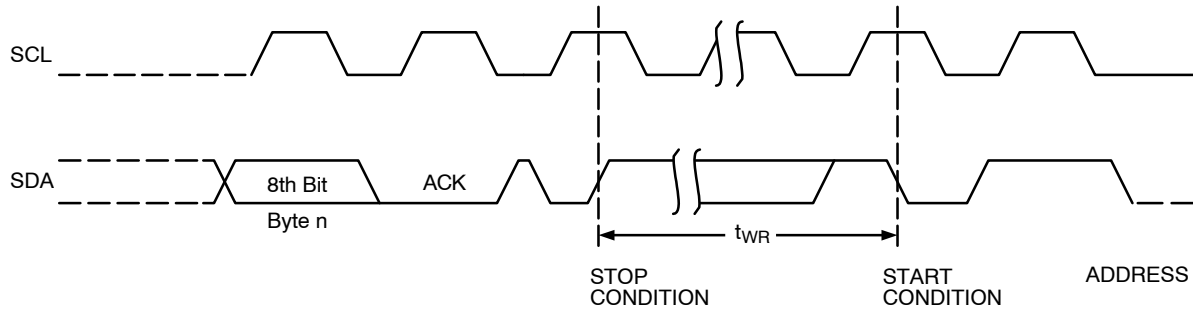


Figure 10. Write Cycle Timing

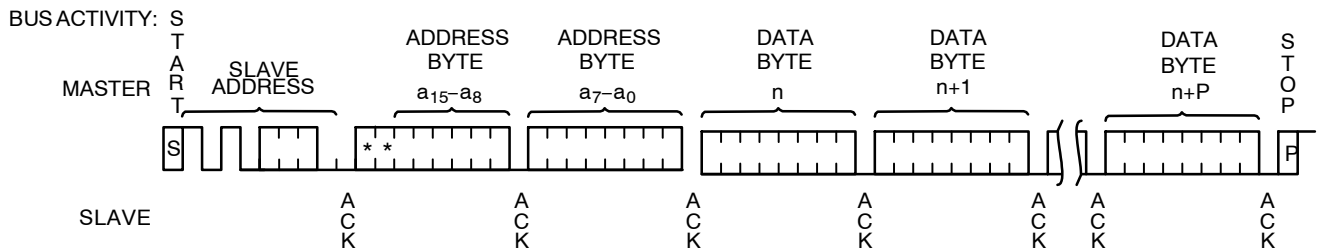


Figure 11. Page Write Sequence

READ OPERATIONS

Immediate Read

To read data from memory, the Master creates a START condition on the bus and then broadcasts a Slave address with the R/\overline{W} bit set to '1'. The Slave responds with ACK and starts shifting out data residing at the current address. After receiving the data, the Master responds with NoACK and terminates the session by creating a STOP condition on the bus (Figure 12). The Slave then returns to Standby mode.

Selective Read

To read data residing at a specific address, the selected address must first be loaded into the internal address register. This is done by starting a Byte Write sequence, whereby the Master creates a START condition, then broadcasts a Slave address with the R/\overline{W} bit set to '0' and then sends two address bytes to the Slave. Rather than completing the Byte Write sequence by sending data, the Master then creates a START condition and broadcasts a Slave address with the R/\overline{W} bit set to '1'. The Slave responds with ACK after every byte sent by the Master and then sends out data residing at the selected address. After receiving the data, the Master responds with NoACK and then terminates the session by creating a STOP condition on the bus (Figure 13).

Sequential Read

If, after receiving data sent by the Slave, the Master responds with ACK, then the Slave will continue transmitting until the Master responds with NoACK followed by STOP (Figure 14). During Sequential Read the internal byte address is automatically incremented up to the end of memory, where it then wraps around to the beginning of memory.

I²C SECURITY

In the I²C mode it is possible to protect each memory sector from user area against write operations. The sector write access is controlled using the 64-bit I2C_Write_Lock bit area and the 32-bit I²C password. There are two commands to control the I²C password: I²C Present Password and I²C Write Password.

I²C Present Password

The I²C Present Password command is used to modify the write access rights of the sectors protected by the I²C Write-Lock bits, including the password itself. N24RF64 will allow this only if the correct password is presented, via I²C bus. If the password is correct, the access rights remain activated until a new I²C Present Password command is received, or the device is powered off.

Following a Start condition, the master sends a write instruction with the slave address with the Read/Write bit

equal to 0 and the A2 bit equal to 1 (system memory). The device acknowledges this and expects two I²C password address bytes, 09h and 00h. The device responds to each address byte with an ACK. The device then expects the 4 password data bytes, the validation code, 09h, and a resend of the 4 password data bytes. The most significant byte of the password is sent first, followed by the least significant bytes.

The 32-bit password must be sent twice to prevent any data corruption during the sequence. If the two 32-bit passwords sent are not exactly the same, the command will not be accepted.

When the bus master generates a Stop condition immediately after the Ack bit, an internal delay equivalent to the write cycle time is triggered. A Stop condition at any other time does not trigger the internal delay. During that delay, the N24RF64 compares the 32 received data bits with the 32 bits of the stored I²C password.

If the values match, the write access rights to all protected sectors are modified after the internal delay. If the values do not match, the protected sectors remains protected.

During the internal delay, the SDA output is tri-stated and the Slave does not acknowledge the Master.

I²C Write Password

The I²C Write Password command is used to overwrite the 32-bit I²C password block. This command is used in I²C mode to update the I²C password value. It cannot be used to modify any of the RF passwords. After the write cycle, the new I²C password value is automatically activated. The I²C password value can only be modified after issuing a valid I²C Present Password command.

Following a Start condition, the master sends a write instruction with the slave address with the Read/Write bit equal to 0 and the A2 bit equal to 1 (system memory). The device acknowledges this and expects two I²C password address bytes, 09h and 00h. The device responds to each address byte with an ACK. The device then expects the 4 password data bytes, the validation code, 07h, and a resend of the 4 password data bytes. The most significant byte of the password is sent first, followed by the least significant bytes. N24RF64 is shipped with the default I²C password 00000000h. By default, the password is activated.

The 32-bit password must be sent twice to prevent any data corruption during the sequence. If the two 32-bit passwords sent are not exactly the same, the command will not be accepted.

When the bus master generates a Stop condition immediately after the Ack bit, the internal write cycle is triggered. A Stop condition at any other time does not trigger the internal write cycle.

During the internal write cycle, the SDA output is tri-stated and the Slave does not acknowledge the Master.

N24RF64

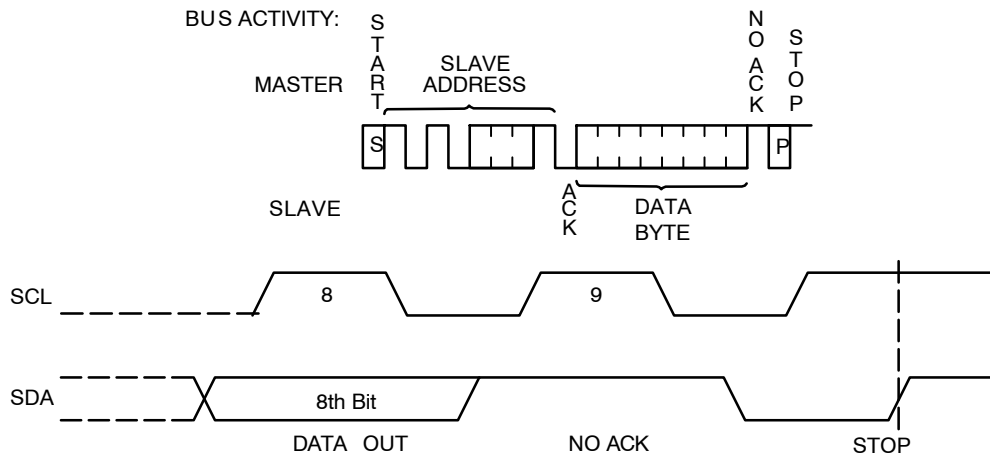


Figure 12. Immediate Read Sequence and Timing

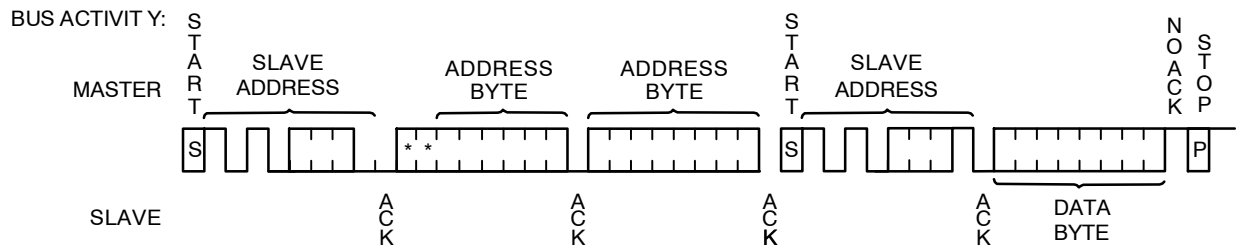


Figure 13. Selective Read Sequence

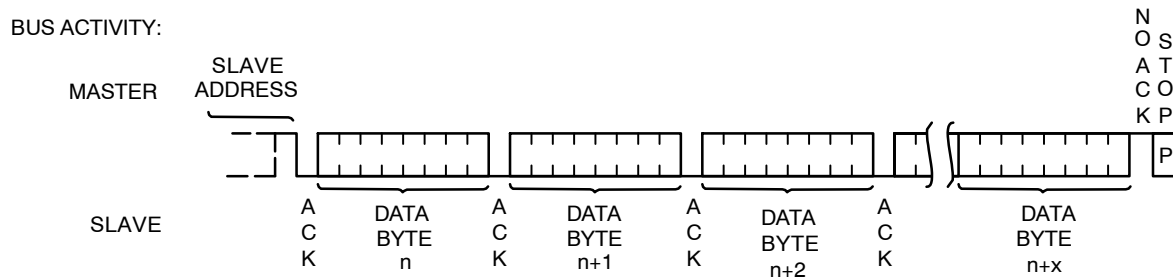


Figure 14. Sequential Read Sequence

RF MODE OPERATION

The communication protocol between the RF Reader and the N24RF64 tag is based on the RTF technique (Reader Talks First):

- Activation of the N24RF64 memory tag by the electromagnetic field of the RF Reader
- Transmission of a command / request by the RF Reader
- Transmission of a response by the memory tag

The memory tag operates continuously under the electromagnetic field (H) generated by the RF Reader. The transmission of data and power is based on inductive coupling using the carrier frequency (f_c) as 13.56 MHz ± 7 kHz per ISO 15693 standard.

Each request from the Reader and each response from the N24RF64 tag are organized in a frame, delimited by a start of frame (SOF) and an end of frame (EOF).

Communication from RF Reader to N24RF64 Tag

The communication between the RF Reader and memory tag uses the ASK (Amplitude Shift Keying) modulation. The received signal is demodulated by the ASK demodulator of the memory tag. The N24RF64 supports both 100% and 10% modulation index. The Reader selects which index is used. Figure 14 shows the 100% ASK modulation waveform.

The data transmission uses pulse position coding described in the ISO 15693: 1 out of 256 data coding with a resulting data rate of 1.65 Kb/s or 1 out of 4 data coding with a data rate of 26.48 Kb/s.

The request from RF Reader to the memory tag consists of: a request SOF, flags, command code, parameters, data, 2-byte CRC, a request EOF. The SOF defines the data coding mode that will be used by the RF Reader for the following command. Figure 15 shows a SOF to select 1 out of 256 data coding and Figure 16 illustrates the SOF to select

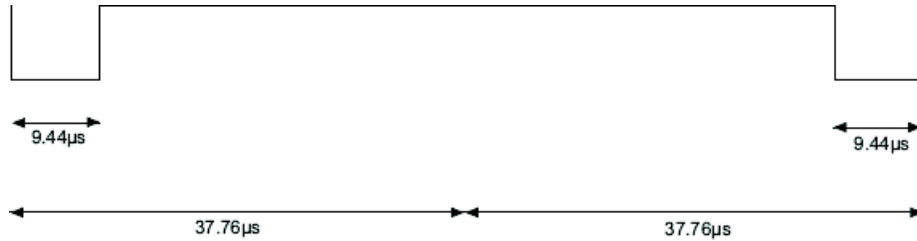


Figure 15. Request SOF for 1 out of 256 Data Coding

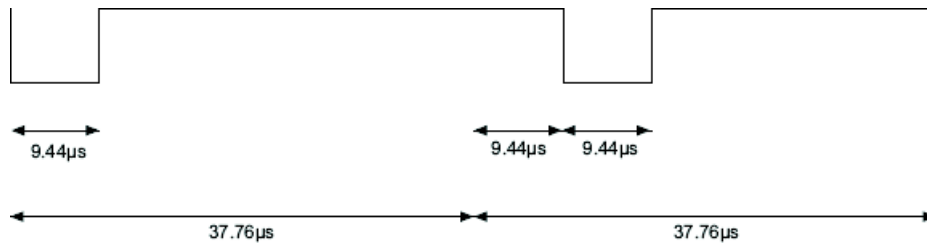


Figure 16. Request SOF for 1 out of 4 Data Coding

Communication from N24RF64 Tag to RF Reader

The communication between the N24RF64 memory tag and the RF reader uses the load modulation with Manchester data coding. Via the inductive coupling, the carrier is loaded to generate a subcarrier with f_s frequency. The device supports the one-subcarrier with 423.75 kHz ($f_c/32$) frequency and two-subcarrier response with 423.75 kHz ($f_c/32$) and 484.28 kHz ($f_c/28$) frequencies. The one-subcarrier or two-subcarrier response format is selected by the RF Reader.

The N24RF64 responds using the low or high data rate for standard commands. The fast commands use a data rate multiplied by two. The data rate is selected by the RF Reader through the protocol header. Table 9 shows the data rates supported by the memory tag using one carrier and two carriers format.

Table 9. TAG RESPONSE DATA RATES

| Command Type | Data Rate | One-Subcarrier | Two-Subcarrier |
|-------------------|-----------|---------------------------|--------------------------|
| Standard Commands | Low | 6.62 Kb/s ($f_c/2028$) | 6.67 Kb/s ($f_c/2032$) |
| Fast Commands | | 13.24 Kb/s ($f_c/1024$) | N/A |
| Standard Commands | High | 26.48 Kb/s ($f_c/512$) | 26.69 Kb/s ($f_c/508$) |
| Fast Commands | | 52.97 Kb/s ($f_c/256$) | N/A |

N24RF64

The N24RF64 supports the following commands in RF mode:

Table 10. RF COMMAND DESCRIPTION

| Nr | Command Name | Command Description |
|----|------------------------------------|--|
| 1 | Inventory | Perform the anticollision sequence |
| 2 | Stay quiet | Put the N24RF64 in quiet mode, where it does not respond to any inventory command |
| 3 | Read single block | Output the 32 bits of the selected block and its locking status |
| 4 | Write single block | Write the 32-bit value in the selected block, if it is not locked |
| 5 | Read multiple blocks | Read the selected blocks and send back their value |
| 6 | Select | Select the N24RF64; after this command the device processes all Read/Write commands with Select_flag set |
| 7 | Reset to ready | Enter the ready state |
| 8 | Write AFI | Write the 8-bit value in the AFI register |
| 9 | Lock AFI | Used to lock the AFI register |
| 10 | Write DSFID | Write the 8-bit value in the DSFID register |
| 11 | Lock DSFID | Lock the DSFID register. |
| 12 | Get system info | Provide the system information value |
| 13 | Get multiple block security status | Send the security status of the selected block |
| 14 | Write sector password | Write the 32-bit selected password |
| 15 | Lock sector | Write the sector security status bits of the selected sector |
| 16 | Present sector password | Enables the user to present a password to unprotect the user blocks linked to this password |
| 17 | Fast read single block | Output the 32 bits of the selected block and its locking status |
| 18 | Fast inventory initiated | Perform the anticollision sequence triggered by the Initiate command |
| 19 | Fast initiate | Trigger the tag response to the Inventory initiated sequence |
| 20 | Fast read multiple blocks | Read the selected blocks and send back their value |
| 21 | Inventory initiated | Perform the anticollision sequence triggered by the Initiate command |
| 22 | Initiate | Trigger the tag response to the Inventory initiated sequence |

Table 11. RF COMMAND FORMAT

| Nr. Crt. | Function | SOF | Flags | Command | IC Mfg. code | UID | Optional AFI | Number | Data | CRC16 | EOF |
|----------|----------------------------|-----|--------|---------|-----------------|----------------------|-----------------|----------------------|------------------------------|---------|-----|
| 1 | Inventory | x | 8 bits | 01h | – | – | 8 bits | 8 bits (Note 13) | 0 to 8 bytes (Note 16) | 16 bits | x |
| 2 | Stay Quiet | x | 8 bits | 02h | – | 8 bytes | – | – | – | 16 bits | x |
| 3 | Read single block | x | 8 bits | 20h | – | 8 bytes | – | 16 bits (Note 14) | – | 16 bits | x |
| 4 | Write single block | x | 8 bits | 21H | – | 8 bytes (Note 12) | – | 16 bits (Note 14) | 32 bits | 16 bits | x |
| 5 | Read multiple blocks | x | 8 bits | 23H | – | 8 bytes (Note 12) | – | 16 bits (Note 14) | 8 bits (Note 17) | 16 bits | x |
| 6 | Select | x | 8 bits | 25h | – | 8 bytes | – | – | – | 16 bits | x |

N24RF64

Table 11. RF COMMAND FORMAT (continued)

| Nr. Crt. | Function | SOF | Flags | Command | IC Mfg. code | UID | Optional AFI | Number | Data | CRC16 | EOF |
|----------|------------------------------------|-----|--------|---------|-----------------|----------------------|-----------------|----------------------|---------------------------|---------|-----|
| 7 | Reset to ready | x | 8 bits | 26h | – | 8 bytes (Note 12) | – | – | – | 16 bits | x |
| 8 | Write AFI | x | 8 bits | 27h | – | 8 bytes (Note 12) | – | – | 8 bits | 16 bits | x |
| 9 | Lock AFI | x | 8 bits | 28h | – | 8 bytes (Note 12) | – | – | – | 16 bits | x |
| 10 | Write DSFID | x | 8 bits | 29h | – | 8 bytes (Note 12) | – | – | 8 bits | 16 bits | x |
| 11 | Lock DSFID | x | 8 bits | 2Ah | – | 8 bytes (Note 12) | – | – | – | 16 bits | x |
| 12 | GET System Info | x | 8 bits | 2Bh | – | 8 bytes (Note 12) | – | – | – | 16 bits | x |
| 13 | Get multiple block security status | x | 8 bits | 2Ch | – | 8 bytes (Note 12) | – | 16 bits (Note 14) | 16 bits (Note 17) | 16 bits | x |
| 14 | Write sector password | x | 8 bits | B1h | 67h | 8 bytes (Note 12) | – | 8 bits (Note 15) | 32 bits | 16 bits | x |
| 15 | Lock sector | x | 8 bits | B2h | 67h | 8 bytes (Note 12) | – | 16 bits (Note 14) | 8 bits | 16 bits | x |
| 16 | Present sector password | x | 8 bits | B3h | 67h | 8 bytes (Note 12) | – | 8 bits (Note 15) | 32 bits | 16 bits | x |
| 17 | Fast read single Block | x | 8 bits | C0h | 67h | 8 bytes (Note 12) | – | 16 bits (Note 14) | – | 16 bits | x |
| 18 | Fast Inventory Initiated | x | 8 bits | C1h | 67h | – | 8 bits | 8 bits (Note 13) | 0 to 8 bytes (Note 16) | 16 bits | x |
| 19 | Fast Initiate | x | 8 bits | C2h | 67h | – | – | – | – | 16 bits | x |
| 20 | Fast read multiple Blocks | x | 8 bits | C3h | 67h | 8 bytes (Note 12) | – | 16 bits (Note 14) | 8 bits (Note 17) | 16 bits | x |
| 21 | Inventory Initiated | x | 8 bits | D1h | 67h | – | 8 bits | 8 bits (Note 13) | 0 to 8 bytes (Note 16) | 16 bits | x |
| 22 | Initiate | x | 8 bits | D2h | 67h | – | – | – | – | 16 bits | x |

12. UID optional.

13. Mask length.

14. Block number/First block number.

15. Password number.

16. Mask value.

17. Number of blocks.

N24RF64

Table 12. INSTRUCTION RESPONSE FORMAT (No Error)

| Nr. Crt. | Function | SOF | Flags Response | Data Byte | UID | DSFID | AFI | Memory Size | IC Ref | Data | CRC16 | EOF |
|----------|---------------------------|-----|----------------|--------------------|---------|--------|--------|-------------|--------|-------------------|---------|-----|
| 1 | Inventory | x | 00h | DSFID | 8 bytes | – | – | – | – | – | 16 bits | x |
| 2 | Stay Quiet | x | – | – | – | – | – | – | – | – | – | x |
| 3 | Read single block | x | 00h | SSS (Note 18) | – | – | – | – | – | 32 bits | 16 bits | x |
| 4 | Write single block | x | 00h | – | – | – | – | – | – | – | 16 bits | x |
| 5 | Read multiple block | x | 00h | SSS (Notes 18, 19) | – | – | – | – | – | 32 bits (Note 19) | 16 bits | x |
| 6 | Select | x | 00h | – | – | – | – | – | – | – | 16 bits | x |
| 7 | Reset to ready | x | 00h | – | – | – | – | – | – | – | 16 bits | x |
| 8 | Write AFI | x | 00h | – | – | – | – | – | – | – | 16 bits | x |
| 9 | Lock AFI | x | 00h | – | – | – | – | – | – | – | 16 bits | x |
| 10 | Write DSFID | x | 00h | – | – | – | – | – | – | – | 16 bits | x |
| 11 | Lock DSFID | x | 00h | – | – | – | – | – | – | – | 16 bits | x |
| 12 | Get System Info–FL_PE = 0 | x | 00h | 0Bh | 8 bytes | 8 bits | 8 bits | – | 8 bits | – | 16 bits | x |
| | Get System Info–FL_PE = 1 | x | 00h | 0Fh | 8 bytes | 8 bits | 8 bits | 24 bits | 8 bits | – | 16 bits | x |

18. SSS optional (FL_OPT = 1).

19. Repeated as needed.

Table 13. INSTRUCTION RESPONSE FORMAT (Error Flag = 1)

| Nr. Crt. | Function | SOF | Flags Response | Error code | CRC16 | EOF |
|----------|-------------------------|-----|----------------|------------|---------|-----|
| 1 | Inventory | – | – | – | – | – |
| 2 | Stay Quiet | – | – | – | – | – |
| 3 | Read single block | x | 01h | 8 bits | 16 bits | x |
| 4 | Write single block | x | 01h | 8 bits | 16 bits | x |
| 5 | Read multiple block | x | 01h | 8 bits | 16 bits | x |
| 6 | Select | x | 01h | 8 bits | 16 bits | x |
| 7 | Reset to ready | x | 01h | 8 bits | 16 bits | x |
| 8 | Write AFI | x | 01h | 8 bits | 16 bits | x |
| 9 | Lock AFI | x | 01h | 8 bits | 16 bits | x |
| 10 | Write DSFID | x | 01h | 8 bits | 16 bits | x |
| 11 | Lock DSFID | x | 01h | 8 bits | 16 bits | x |
| 12 | Get System Info | x | 01h | 8 bits | 16 bits | x |
| 13 | Get Multiple Block SS | x | 01h | 8 bits | 16 bits | x |
| 14 | Write sector password | x | 01h | 8 bits | 16 bits | x |
| 15 | Lock sector | x | 01h | 8 bits | 16 bits | x |
| 16 | Present sector password | x | 01h | 8 bits | 16 bits | x |
| 17 | Fast read single Block | x | 01h | 8 bits | 16 bits | x |

N24RF64

Table 13. INSTRUCTION RESPONSE FORMAT (Error Flag = 1) (continued)

| Nr. Crt. | Function | SOF | Flags Response | Error code | CRC16 | EOF |
|----------|--------------------------|-----|----------------|------------|---------|-----|
| 18 | Fast Inventory Initiated | – | – | – | – | – |
| 19 | Fast Initiate | – | – | – | – | – |
| 20 | Fast read multiple Block | x | 01h | 8 bits | 16 bits | x |
| 21 | Inventory Initiated | – | – | – | – | – |
| 22 | Initiate | – | – | – | – | – |

Table 14. RESPONSE ERROR CODE

| Nr. Crt. | Function | Error Code | | | | | | | | |
|----------|--------------------------|------------|-----|-----|-----|-----|-----|-----|-----|-----|
| | | 02h | 03h | 0Fh | 10h | 11h | 12h | 13h | 14h | 15h |
| 1 | Inventory | – | – | – | – | – | – | – | – | – |
| 2 | Stay Quiet | – | – | – | – | – | – | – | – | – |
| 3 | Read single block | – | x | – | x | – | – | – | – | x |
| 4 | Write single block | – | x | – | x | – | x | x | – | – |
| 5 | Read multiple block | – | x | x | x | – | – | – | – | x |
| 6 | Select | – | x | – | – | – | – | – | – | – |
| 7 | Reset to ready | – | x | – | – | – | – | – | – | – |
| 8 | Write AFI | – | x | – | – | – | x | x | – | – |
| 9 | Lock AFI | – | x | – | – | x | – | – | x | – |
| 10 | Write DSFID | – | x | – | – | – | x | x | – | – |
| 11 | Lock DSFID | – | x | – | – | x | – | – | x | – |
| 12 | Get System Info | – | x | – | – | – | – | – | – | – |
| 13 | Get Multiple Block SS | – | x | x | x | – | – | – | – | – |
| 14 | Write sector password | x | x | – | x | – | x | x | – | – |
| 15 | Lock sector | x | x | – | x | x | – | – | x | – |
| 16 | Present sector password | x | x | x | x | – | – | – | – | – |
| 17 | Fast read single Block | x | x | – | x | – | – | – | – | x |
| 18 | Fast Inventory Initiated | – | – | – | – | – | – | – | – | – |
| 19 | Fast Initiate | – | – | – | – | – | – | – | – | – |
| 20 | Fast read multiple Block | x | x | x | x | – | – | – | – | x |
| 21 | Inventory Initiated | – | – | – | – | – | – | – | – | – |
| 22 | Initiate | – | – | – | – | – | – | – | – | – |

N24RF64

| Error code | Meaning |
|------------|---|
| 02h | The command is not recognized |
| 03h | The option is not supported |
| 0Fh | Unknown error |
| 10h | The specified block is not available (doesn't exist) |
| 11h | The specified block is already locked and this cannot be locked again |
| 12h | The specified block is locked and its content cannot be changed |
| 13h | The specified block was not successfully programmed |
| 14h | The specified block was not successfully locked |
| 15h | The specified block is read-protected |

Table 15. REQUEST FLAGS

| Nr. Crt. | Function | bit 7 | bit6 | bit5 | | bit4 | | bit3 | bit2 | bit1 | bit0 |
|----------|--------------------------|-------|-------------|--------------|--------------|-------------|----------|-------------------------|----------------|----------------|------------------|
| | | RFU | Option Flag | Address Flag | NB Slot Flag | Select Flag | AFI Flag | Protocol Extension Flag | Inventory Flag | Data Rate Flag | Sub-Carrier Flag |
| 1 | Inventory | 0 | 0 | – | 0/1 | – | 0/1 | 0 | 1 | 0/1 | 0/1 |
| 2 | Stay Quiet | 0 | 0 | 1 | – | 0 | – | 0 | 0 | 0/1 | 0/1 |
| 3 | Read single block | 0 | 0/1 | 0/1 | – | 0/1 | – | 1 | 0 | 0/1 | 0/1 |
| 4 | Write single block | 0 | 0/1 | 0/1 | – | 0/1 | – | 1 | 0 | 0/1 | 0/1 |
| 5 | Read multiple block | 0 | 0/1 | 0/1 | – | 0/1 | – | 1 | 0 | 0/1 | 0/1 |
| 6 | Select | 0 | 0 | 1 | – | 0 | – | 0 | 0 | 0/1 | 0/1 |
| 7 | Reset to ready | 0 | 0 | 0/1 | – | 0/1 | – | 0 | 0 | 0/1 | 0/1 |
| 8 | Write AFI | 0 | 0/1 | 0/1 | – | 0/1 | – | 0 | 0 | 0/1 | 0/1 |
| 9 | Lock AFI | 0 | 0/1 | 0/1 | – | 0/1 | – | 0 | 0 | 0/1 | 0/1 |
| 10 | Write DSFID | 0 | 0/1 | 0/1 | – | 0/1 | – | 0 | 0 | 0/1 | 0/1 |
| 11 | Lock DSFID | 0 | 0/1 | 0/1 | – | 0/1 | – | 0 | 0 | 0/1 | 0/1 |
| 12 | GET System Info | 0 | 0 | 0/1 | – | 0/1 | – | 0/1 | 0 | 0/1 | 0/1 |
| 13 | Get Multiple Block SS | 0 | 0 | 0/1 | – | 0/1 | – | 1 | 0 | 0/1 | 0/1 |
| 14 | Write sector password | 0 | 0/1 | 0/1 | – | 0/1 | – | 0 | 0 | 0/1 | 0/1 |
| 15 | Lock sector | 0 | 0/1 | 0/1 | – | 0/1 | – | 0 | 0 | 0/1 | 0/1 |
| 16 | Present sector password | 0 | 0 | 0/1 | – | 0/1 | – | 0 | 0 | 0/1 | 0/1 |
| 17 | Fast read single Block | 0 | 0/1 | 0/1 | – | 0/1 | – | 1 | 0 | 0/1 | 0 |
| 18 | Fast Inventory Initiated | 0 | 0 | – | 0/1 | – | 0/1 | 0 | 1 | 0/1 | 0 |
| 19 | Fast Initiate | 0 | 0 | 0 | – | 0 | – | 0 | 0 | 0/1 | 0 |
| 20 | Fast read multiple Block | 0 | 0/1 | 0/1 | – | 0/1 | – | 1 | 0 | 0/1 | 0 |
| 21 | Inventory Initiated | 0 | 0 | – | 0/1 | – | 0/1 | 0 | 1 | 0/1 | 0/1 |
| 22 | Initiate | 0 | 0 | 0 | – | 0 | – | 0 | 0 | 0/1 | 0/1 |

N24RF64

ORDERING INFORMATION

| Device Order Number | Specific Device Marking | Package Type | Temperature Range | Lead Finish | Shipping ¹ |
|---------------------|-------------------------|----------------------|-------------------|-------------|-----------------------|
| N24RF64DWPT3G | 24RF64 | SOIC-8 (Pb-Free) | -40°C to +105°C | NiPdAu | 3000 / Tape & Reel |
| N24RF64DTPT3G | RF64 | TSSOP-8 (Pb-Free) | -40°C to +105°C | NiPdAu | 3000 / Tape & Reel |

†For information on tape and reel specifications, including part orientation and tape sizes, please refer to our Tape and Reel Packaging Specifications Brochure, BRD8011/D.

20. All packages are RoHS-compliant (Pb-Free, Halogen-free).

21. Contact factory for availability.

MECHANICAL CASE OUTLINE

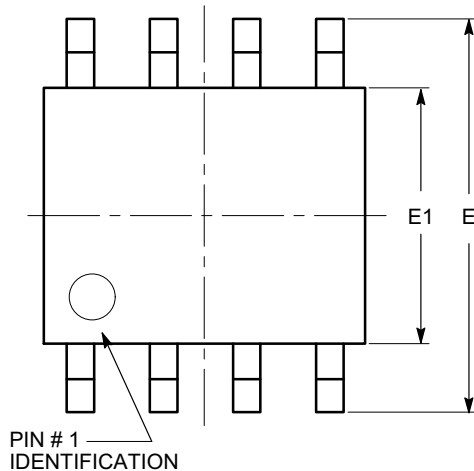
PACKAGE DIMENSIONS

ON Semiconductor®



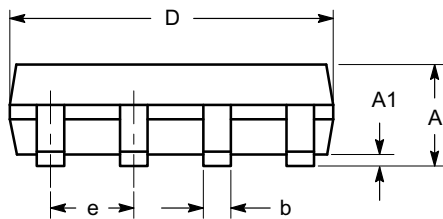
SOIC 8, 150 mils
CASE 751BD-01
ISSUE O

DATE 19 DEC 2008

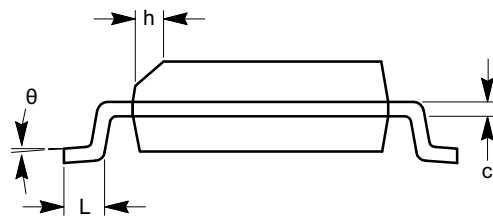


TOP VIEW

| SYMBOL | MIN | NOM | MAX |
|--------|----------|-----|------|
| A | 1.35 | | 1.75 |
| A1 | 0.10 | | 0.25 |
| b | 0.33 | | 0.51 |
| c | 0.19 | | 0.25 |
| D | 4.80 | | 5.00 |
| E | 5.80 | | 6.20 |
| E1 | 3.80 | | 4.00 |
| e | 1.27 BSC | | |
| h | 0.25 | | 0.50 |
| L | 0.40 | | 1.27 |
| θ | 0° | | 8° |



SIDE VIEW



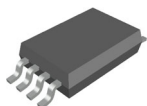
END VIEW

Notes:

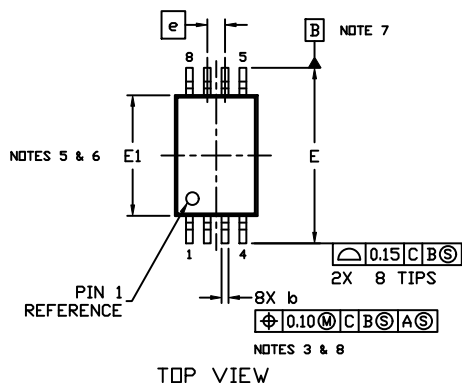
- (1) All dimensions are in millimeters. Angles in degrees.
- (2) Complies with JEDEC MS-012.

| | | |
|------------------|------------------|---|
| DOCUMENT NUMBER: | 98AON34272E | Electronic versions are uncontrolled except when accessed directly from the Document Repository. Printed versions are uncontrolled except when stamped "CONTROLLED COPY" in red. |
| DESCRIPTION: | SOIC 8, 150 MILS | PAGE 1 OF 1 |

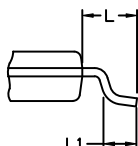
ON Semiconductor and are trademarks of Semiconductor Components Industries, LLC dba ON Semiconductor or its subsidiaries in the United States and/or other countries. ON Semiconductor reserves the right to make changes without further notice to any products herein. ON Semiconductor makes no warranty, representation or guarantee regarding the suitability of its products for any particular purpose, nor does ON Semiconductor assume any liability arising out of the application or use of any product or circuit, and specifically disclaims any and all liability, including without limitation special, consequential or incidental damages. ON Semiconductor does not convey any license under its patent rights nor the rights of others.

onsemi[™]

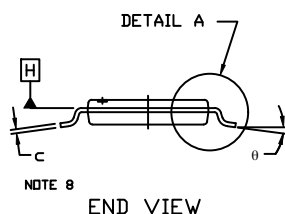
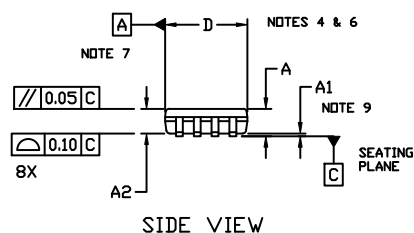
DATE 20 MAY 2022



1. DIMENSIONING AND TOLERANCING PER ASME Y14.5, 2009..
2. CONTROLLING DIMENSION: MILLIMETERS
3. DIMENSION b DOES NOT INCLUDE DAMBAR PROTRUSION. ALLOWABLE PROTRUSION SHALL NOT BE 0.15 IN EXCESS OF MAXIMUM MATERIAL CONDITION.
4. DIMENSION d DOES NOT INCLUDE MOLD FLASH, PROTRUSIONS OR GATE BURRS. MOLD FLASH, PROTRUSIONS OR GATE BURRS SHALL NOT EXCEED 0.15 PER SIDE.
5. DIMENSION $E1$ DOES NOT INCLUDE INTERLEAD FLASH OR PROTRUSION. INTERLEAD FLASH OR PROTRUSION SHALL NOT EXCEED 0.25 PER SIDE.
6. THE PACKAGE TOP MAY BE SMALLER THAN THE PACKAGE BOTTOM. DIMENSIONS d AND $E1$ ARE DETERMINED AT THE OUTERMOST EXTREMES OF THE PLASTIC BODY AT DATUM PLANE H.
7. DATUMS A AND B ARE TO BE DETERMINED AT DATUM H.
8. DIMENSIONS b AND c APPLY TO THE FLAT SECTION OF THE LEAD BETWEEN 0.10 AND 0.25 FROM THE LEAD TIP.
9. $A1$ IS DEFINED AS THE LOWEST VERTICAL DISTANCE FROM THE SEATING PLANE TO THE LOWEST POINT ON THE PACKAGE BODY..



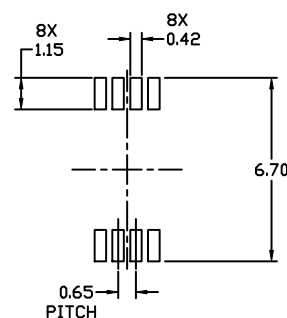
DETAIL A



| DIM | MILLIMETERS | | |
|-----|-------------|------|------|
| | MIN. | NOM. | MAX. |
| A | --- | --- | 1.20 |
| A1 | 0.05 | --- | 0.15 |
| A2 | 0.80 | 0.90 | 1.05 |
| b | 0.19 | --- | 0.30 |
| c | 0.09 | --- | 0.20 |
| D | 2.90 | 3.00 | 3.10 |
| E | 6.30 | 6.40 | 6.50 |
| E1 | 4.30 | 4.40 | 4.50 |
| e | 0.65 BSC | | |
| L | 1.00 REF | | |
| L1 | 0.50 | 0.60 | 0.70 |
| ø | 0* | --- | 8* |

XXX
YWW
A■

*This information is generic. Please refer to device data sheet for actual part marking. Pb-Free indicator, "G" or microdot "•", may or may not be present. Some products may not follow the Generic Marking.

RECOMMENDED
MOUNTING FOOTPRINT*

* For additional information on our Pb-Free strategy and soldering details, please download the ON Semiconductor Soldering and Mounting Techniques Reference Manual, [SOLDDERM/D](http://www.onsemi.com/SOLDERM/D).

| | | |
|-------------------------|-------------------------------|---|
| DOCUMENT NUMBER: | 98AON34428E | Electronic versions are uncontrolled except when accessed directly from the Document Repository. Printed versions are uncontrolled except when stamped "CONTROLLED COPY" in red. |
| DESCRIPTION: | TSSOP8, 4.4X3.0, 0.65P | PAGE 1 OF 1 |

onsemi and **onsemi** are trademarks of Semiconductor Components Industries, LLC dba **onsemi** or its subsidiaries in the United States and/or other countries. **onsemi** reserves the right to make changes without further notice to any products herein. **onsemi** makes no warranty, representation or guarantee regarding the suitability of its products for any particular purpose, nor does **onsemi** assume any liability arising out of the application or use of any product or circuit, and specifically disclaims any and all liability, including without limitation special, consequential or incidental damages. **onsemi** does not convey any license under its patent rights nor the rights of others.

onsemi, **Onsemi**, and other names, marks, and brands are registered and/or common law trademarks of Semiconductor Components Industries, LLC dba "**onsemi**" or its affiliates and/or subsidiaries in the United States and/or other countries. **onsemi** owns the rights to a number of patents, trademarks, copyrights, trade secrets, and other intellectual property. A listing of **onsemi**'s product/patent coverage may be accessed at www.onsemi.com/site/pdf/Patent-Marking.pdf. **onsemi** reserves the right to make changes at any time to any products or information herein, without notice. The information herein is provided "as-is" and **onsemi** makes no warranty, representation or guarantee regarding the accuracy of the information, product features, availability, functionality, or suitability of its products for any particular purpose, nor does **onsemi** assume any liability arising out of the application or use of any product or circuit, and specifically disclaims any and all liability, including without limitation special, consequential or incidental damages. Buyer is responsible for its products and applications using **onsemi** products, including compliance with all laws, regulations and safety requirements or standards, regardless of any support or applications information provided by **onsemi**. "Typical" parameters which may be provided in **onsemi** data sheets and/or specifications can and do vary in different applications and actual performance may vary over time. All operating parameters, including "Typicals" must be validated for each customer application by customer's technical experts. **onsemi** does not convey any license under any of its intellectual property rights nor the rights of others. **onsemi** products are not designed, intended, or authorized for use as a critical component in life support systems or any FDA Class 3 medical devices or medical devices with a same or similar classification in a foreign jurisdiction or any devices intended for implantation in the human body. Should Buyer purchase or use **onsemi** products for any such unintended or unauthorized application, Buyer shall indemnify and hold **onsemi** and its officers, employees, subsidiaries, affiliates, and distributors harmless against all claims, costs, damages, and expenses, and reasonable attorney fees arising out of, directly or indirectly, any claim of personal injury or death associated with such unintended or unauthorized use, even if such claim alleges that **onsemi** was negligent regarding the design or manufacture of the part. **onsemi** is an Equal Opportunity/Affirmative Action Employer. This literature is subject to all applicable copyright laws and is not for resale in any manner.

PUBLICATION ORDERING INFORMATION

LITERATURE FULFILLMENT:

Email Requests to: orderlit@onsemi.com

onsemi Website: www.onsemi.com

TECHNICAL SUPPORT

North American Technical Support:

Voice Mail: 1 800-282-9855 Toll Free USA/Canada

Phone: 011 421 33 790 2910

Europe, Middle East and Africa Technical Support:

Phone: 00421 33 790 2910

For additional information, please contact your local Sales Representative

Mouser Electronics

Authorized Distributor

Click to View Pricing, Inventory, Delivery & Lifecycle Information:

[onsemi:](#)

[N24RF64DTPT3G](#) [N24RF64DWPT3G](#)