



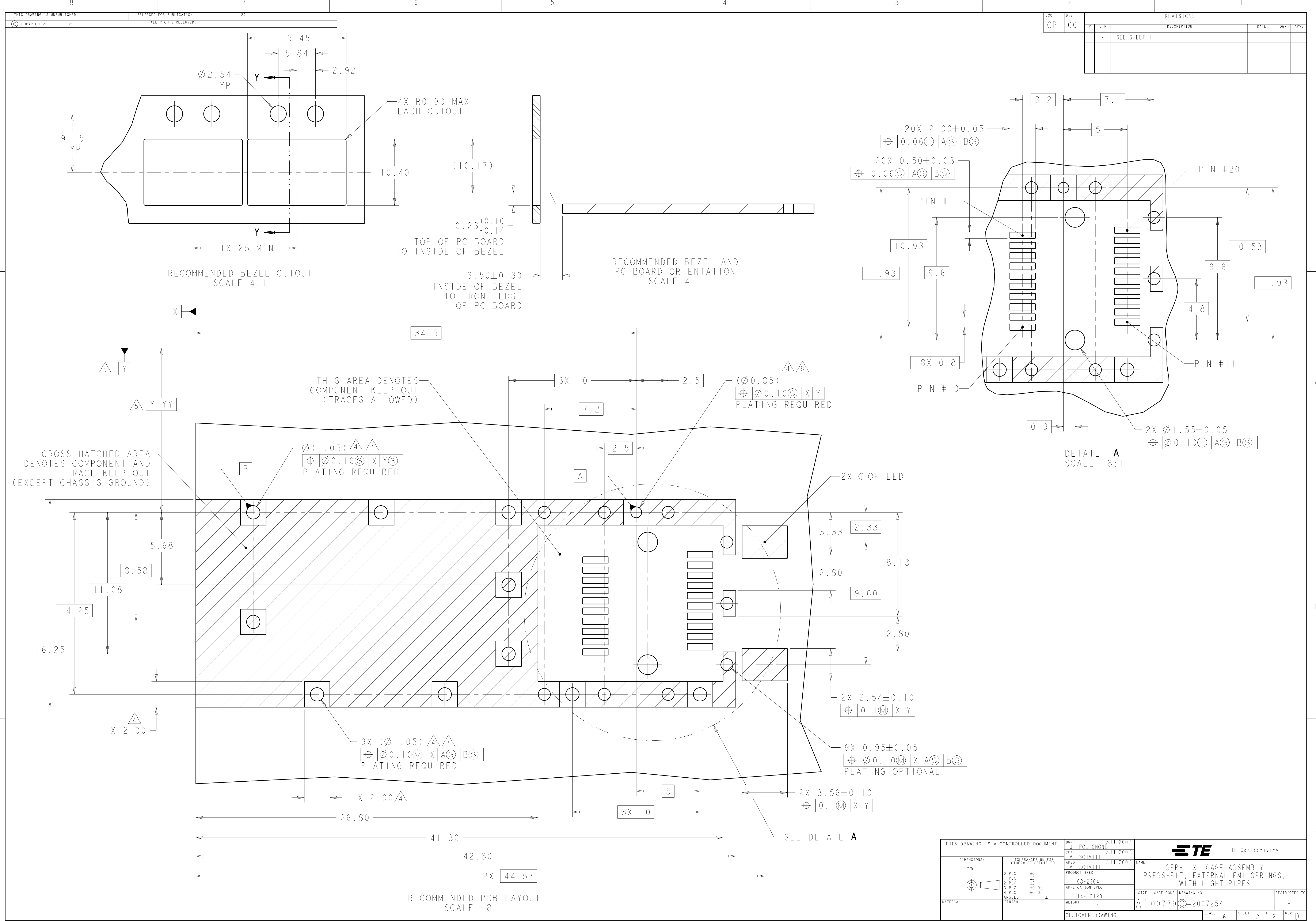


LOC		DIST		REVISIONS					
GP		00		REV	LYR	DESCRIPTION	DATE	OWN	APVD
				C1		REVISED PER ECO-11-004835	11MAR2011	RK	HMR
				D		REVISED PER ECO-11-019224	09JAN2012	TX	AC

THIS DRAWING IS A CONTROLLED DOCUMENT.			OWN J. POLIGNONE 3JUL2007	 TE Connectivity				
DIMENSIONS:			CHK M. SCHMITT 13JUL2007					
mm	TOLERANCES UNLESS OTHERWISE SPECIFIED:		APVD M. SCHMITT 13JUL2007	NAME  SFP+ 1X1 CAGE ASSEMBLY PRESS-FIT, EXTERNAL EMI SPRINGS, WITH LIGHT PIPES				
		PRODUCT SPEC						
		108-2364						
		APPLICATION SPEC						
MATERIAL		FINISH	WEIGHT	SIZE		CAGE CODE	DRAWING NO	RESTRICTED TO
			-	A100779		C	2007254	-
CUSTOMER DRAWING			SCALE		SHEET		REV	
			6:1		1 OF 2		D	



THIS DRAWING IS A CONTROLLED DOCUMENT.		DWN J. POLIGNONE 3JUL2007	NAME SFP+ 1X1 CAGE ASSEMBLY PRESS-FIT, EXTERNAL EMI SPRINGS, WITH LIGHT PIPES
DIMENSIONS:		CHK M. SCHMITT 13JUL2007	
mm		APVD M. SCHMITT 13JUL2007	
TOLERANCES UNLESS OTHERWISE SPECIFIED:		PRODUCT SPEC	
9 PLC ±0.1		APPLICATION SPEC	SIZE CAGE CODE DRAWING NO A100779C=2007254
3 PLC ±0.1		WEIGHT	
3 PLC ±0.1		CUSTOMER DRAWING	RESTRICTED TO
5 PLC ±0.05		SCALE 6:1	SHEET 2 OF 2
4 PLC ±0.05		REV D	
ANGLES			
FINISH			

# Mouser Electronics

Authorized Distributor

Click to View Pricing, Inventory, Delivery & Lifecycle Information:

[TE Connectivity:](#)

[2007254-1](#)