



## 電氣規格書

料號 :  
 9PA250E606 ,,,SPH,G.P,,,FSP250-50FGNC,(I00903),IPC,FLEX,禁  
 USA,ErP,,250W,,BALL,WO/IO,WO/SS,FSP,,,W/PFC(A),ODM,,,FULL  
 RANGE,+SPH,9PA250E605,,,RAZ08,,  
 9PA250E611 ,,,SPH,G.P,,,FSP250-50FGNC,(I529001),IPC,FLEX,禁USA,NON  
 ErP,,250W,,BALL,WO/IO,WO/SS,FSP,,,W/PFC(A),ODM,,,FULL  
 RANGE,+SPH,9PA250E606,,,RAZ08,,

版次 : 04  
 文件編號 : ESD16005055-R1  
 研發部門 : RAZ08  
 作者 :  
 Model No/Type : FSP250-50FGNC  
 發行日期 : 2019/12/26 13:46:15  
 備註 : 關聯9PA250E611

單位	姓名	單位	姓名	單位	姓名
Manager(申請者 主管)	fsp_cch				



全漢企業股份有限公司  
FSP TECHNOLOGY INC

台灣 桃園市建國東路 22 號  
NO.22, Jianguo E. Rd., Taoyuan City, Taiwan, R.O.C.  
TEL:+886-3-375-9888 FAX:+886-3-375-6966

# SPECIFICATION

## FSP250-50FGNC

9PA250E606

9PA250E611

**Main Feature:**  
**High Efficiency**  
**Meet 2013 ErP**  
**Active PFC Circuit**  
**Full Range Input**  
**Low Noise**

DEC 25, 2019

REV :1.02



全漢企業股份有限公司  
FSP TECHNOLOGY INC

**MODEL: FSP250-50FGNC**

**Revision History**

<u>Rev</u>	<u>Description</u>	<u>Date</u>	<u>Author</u>
1.00		2016/05/18	
1.01	6.6 DIELECTRIC STRENGTH Primary to Frame Ground : 1800 Vac for 3 sec. Primary to Secondary : 1800Vac for 3 sec	2019/6/21	Sam
1.02	ADD 9PA250E611	2019/12/25	Sam

## 1. GENERAL DESCRIPTION AND SCOPE

This is the specification of Model FSP250-50FGNC; AC-line powered switching power supply with active PFC (Power Factor Correction) circuit, meet EN61000-3-2 . Also, +5Vsb power is less than  $0.5W_{input}$  at power off mode (PS\_ON input at high state) which is comply with ErP Lot 6 year 2013 requirement.

The specification below is intended to describe as detailedly as possible the functions and performance of the subject power supply. Any comment or additional requirements to this specification from our customers will be highly appreciated and treated as a new target for us to approach.

## 2. REFERENCE DOCUMENTS

The subject power supply will meet the EMI requirements and obtain main safety approvals as following:

### 2.1 EMI REGULATORY

### 2.2 SAFETY

### 3. INPUT ELECTRICAL SPECIFICATIONS

#### 3.1. AC INPUT

Parameter	Min.	Nom. <sup>(1)</sup>	Max.	Unit
V <sub>in</sub> (115VAC)	90	115	150	VAC <sub>rms</sub>
V <sub>in</sub> (230VAC)	180	230	265	VAC <sub>rms</sub>
V <sub>in</sub> Frequency	47	--	63	HZ

◆ Nominal voltages for test purposes are considered to be within  $\pm 1.0V$  of nominal.

#### 3.2. INRUSH CURRENT

Maximum inrush current from power-on (with power on at any point on the AC sine) and including, but not limited to, three line cycles, shall be limited to a level below the surge rating of the input line cord, AC switch if present, bridge rectifier, fuse, and EMI filter components. Repetitive ON/OFF cycling of the AC input voltage should not damage the power supply or cause the input fuse to blow.

#### 3.3. INPUT LINE CURRENT

AC input	Input line current	Power Factor (@ Full Load)
115V	< 3.0Amps – rms	> 0.95
230V	< 2.0Amps – rms	> 0.9

#### 3.4. EFFICIENCY

##### 3.4.1 General

Under the load conditions defined in Table 1 and Table 2. The loading condition for testing efficiency shown in Table 1 represents a fully loaded system. a ~ 50-60% (typical) loaded system. and a ~ 20-30% (light) loaded system.

**Table. 1 Loading Table for Efficiency Measurements**

<b>250W(loading shown in Amps)</b>					
<b>Loading</b>	<b>+12V</b>	<b>+5V</b>	<b>+3.3V</b>	<b>-12V</b>	<b>+5Vsb</b>
<b>Full</b>	<b>16.5</b>	<b>6</b>	<b>4</b>	<b>0.4</b>	<b>1.0</b>
<b>Typical</b>	<b>10</b>	<b>3</b>	<b>2</b>	<b>0.2</b>	<b>0.5</b>
<b>Light</b>	<b>5.5</b>	<b>0.3</b>	<b>0.5</b>	<b>0.1</b>	<b>0.1</b>

**Table 2. Minimum Efficiency Vs Load**

<b>Loading</b>	<b>Voltage</b>	<b>Full load</b>	<b>Typical load</b>	<b>Light load</b>
<b>Required Minimum Efficiency</b>	<b>115V</b>	<b>78%</b>	<b>79%</b>	<b>78%</b>
<b>Required Minimum Efficiency</b>	<b>230V</b>	<b>78%</b>	<b>79%</b>	<b>78%</b>

◆ Minimum Efficiency for test purposes are considered to be within  $\pm 1.0\%$  of nominal.

#### 3.4.2 Standby Power Consumption (+5Vsb):

Input Power < 0.5W @ 5Vsb/45mA & 230Vac input

PS\_ON input signal @ High State

## 4.0. OUTPUT ELECTRICAL REQUIREMENTS

### 4.1 OUTPUT VOLTAGE AND CURRENT RATING

<b>Output</b>	<b>MINIMUM LOAD</b>	<b>NORMAL LOAD</b>	<b>MAXIMUM LOAD</b>	<b>PEAK LOAD</b>	<b>LOAD REG</b>	<b>LINE REG.</b>	<b>NOISE</b>	<b>RIPPLE</b>
+3.3V	0.5A	10A	17A	20A	$\pm 5\%$	$\pm 1\%$	50mV P-P	50mV P-P
+5V	0.3A	10.A	18A	20A	$\pm 5\%$	$\pm 1\%$	50mV P-P	50mV P-P
+12V	1A	8.5A	17A	20A	$\pm 5\%$	$\pm 1\%$	120mV P-P	120mV P-P
-12V	0A	0.4A	0.5A		$\pm 10\%$	$\pm 1\%$	120mV P-P	120mV P-P
+5VSB	0A	1A	2A	2.5A	$\pm 5\%$	$\pm 1\%$	50mV P-P	50mV P-P

(1) +3.3V & +5V total output not exceed 105W.

(2) +3.3V & +5V & +12V total output not exceed 230W.

(3) Total output for this subject power supply is 250 watts.

(4) Voltages and ripple are measured at the load side of mating connectors with a 0.1uF monolithic ceramic capacitor paralleled by a 10uF electrolytic capacitor across the measuring terminals.

## 4.2. LOAD CAPACITY SPECIFICATIONS

The cross regulation defined as follows, the voltage regulation limits DC include DC Output ripple & noise.

LOAD	+3.3V	+5V	+12V	-12V	+5VSB
Condition_1	X	X	X	X	2A
Condition_2	0.5A	0.3 A	1A	0A	0A
Condition_3	0.5A	5A	5A	0.5A	0.1A
Condition_4	1 A	6A	17A	0.1A	0.1A
Condition_5	1 A	12A	4A	0.1A	0.1A
Condition_6	7.5A	16A	12A	0.1A	0.1A
Condition_7	12A	2A	2A	0A	0.1A
Condition_8	17A	9.7A	10.5A	0.5A	2A

## 4.3. HOLD-UP TIME (@ 80% of Full Load of Table. 1)

115V / 60Hz : 15 mSec. Minimum.

230V / 50Hz : 15 mSec. Minimum.

The output voltage will remain within specification, in the event that the input power is removed or interrupted, for the duration of one cycle of the input frequency. The interruption may occur at any point in the AC voltage cycle. The power good signal shall remain high during this test.

## 4.4. OUTPUT RISE TIME

(10% TO 90% OF FINAL OUTPUT VALUE, @FULL LOAD)

115V-rms or 230V-rms      + 3.3Vdc : 20ms Maximum  
    + 5Vdc : 20ms Maximum  
    + 12Vdc : 20ms Maximum  
    + 5Vsb : 20ms Maximum  
    - 12Vdc : 20ms Maximum

#### 4.5.OVER VOLTAGE PROTECTION

Voltage Source	Protection Point
+3.3V	3.8V-5.5V
+5V	5.7V-7.5V
+12V	13.5V-17V

#### 4.6.SHORT CIRCUIT PROTECTION

Output short circuit is defined to be a short circuit load of less than 0.1 ohm.

In the event of an output short circuit condition on +3.3V, +5V or +12V output, the power supply will shutdown and latch off without damage to the power supply. The power supply shall return to normal operation after the short circuit has been removed and the power switch has been turned off for no more than 2 seconds.

#### 4.7. POWER SIGNAL

POWER GOOD @ 115/230V,FULL LOAD	100 –500mSec.
POWER FAIL @ 115/230V,FULL LOAD	1 mSec. minimum

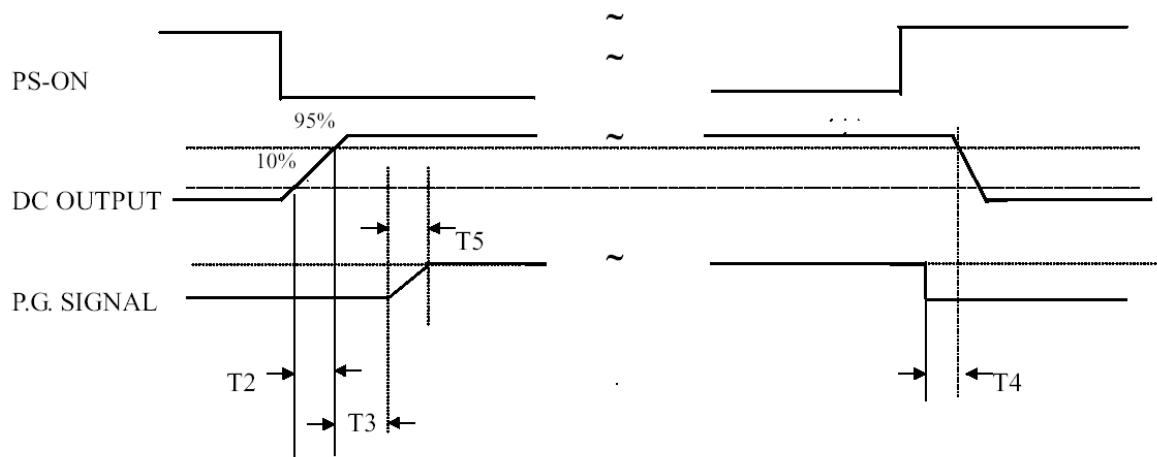


Figure 1

T2 : RISETIME < 20mS

T3 : POWER GOOD DELAY TIME 100mS-500mS

T4 : POWER FAIL DELAY TIME > 1mS

T5 : POWER GOOD RISETIME  $\leq$  10mS

4.9. The main power supply shall be off when the PS\_ON pin is floating (open collector). The ON/STBY pin of P1 must remain off state for 5 Sec (maximum) prior to switching to the ON state.



## 5.0 FAN NOISE REQUIREMENTS

5.1. The subject power supply is cooled by a self-contained, 40mm×15mm, 12VDC fan.

## 6.0 ENVIRONMENTAL REQUIREMENTS

The power supply will be compliant with each item in this specification for the following Environmental conditions.

### 6.1. TEMPERATURE RANGE

Operating	10 to +50 deg. C
Storage	-20 to +80 deg. C

The maximum continuous power rating of supply is 250W at 50°C.

### 6.2. HUMIDITY

Operating	5 –95% RH, Non-condensing
Storage	5 –95% RH, Non-condensing

### 6.3. VIBRATION

#### Random Vibration

0.01g<sup>2</sup>/ Hz at 5 Hz, sloping to 0.02g<sup>2</sup>/ Hz at 20 Hz, and maintaining 0.02g<sup>2</sup>/ Hz from 20Hz to 500Hz. The area under the PSD curve is 3.13gRMS.

The duration shall be 20 minutes per axis for all three axes on all samples.

### 6.4 GROUND LEAKAGE CURRENT

The power supply ground leakage current shall be less than 3.5 mA.

### 6.5 RELIABILITY

The power supply reliability, when calculated by MIL-HDBK-217; latest revision, are exceed 100,000 hours with all output at maximum load and an ambient temperature of 25°C.

## 6.6 DIELECTRIC STRENGTH

Primary to Frame Ground : 1800 Vac for 3 sec.

Primary to Secondary : 1800Vac for 3 sec

## 6.7 INSULATION RESISTANCE

Primary to Frame Ground : 20 Meg.ohms Minimum

Primary to Secondary : 20 Meg.ohms Minimum

## 7.0. LABELLING

Label marking will be permanent, legible and complied with all agency requirements.

### 7.1. MODEL NUMBER LABEL

Labels will be affixed to the sides of the power supply showing the following:

- Manufacturer's name and logo.
- Model no., serial no., revision level, location of manufacturer.
- The total power output and the maximum load for each output.
- AC input rating.

## 8.0 MECHANICAL SPECIFICATIONS

The mechanical drawing of the subject power supply, which indicate the form factor, location of the mounting holes, location, the length of the connectors, and other physical specifications of the subject power supply. Please refer to the attachment drawing.