

REVISIONS

P	LTR	DESCRIPTION	DATE	DWN	APVD
	S	PRODUCTION ISSUE	25JAN2019	PNT	MT

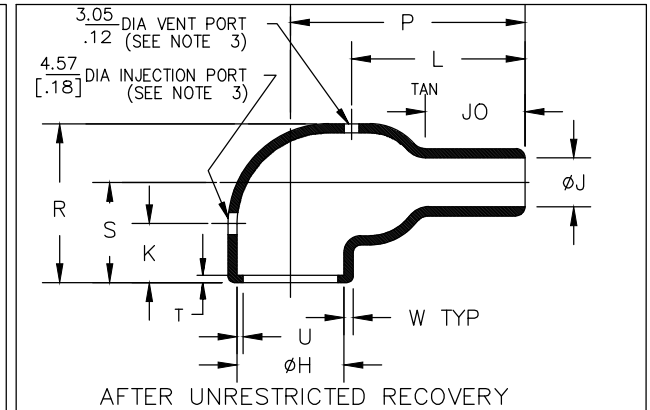
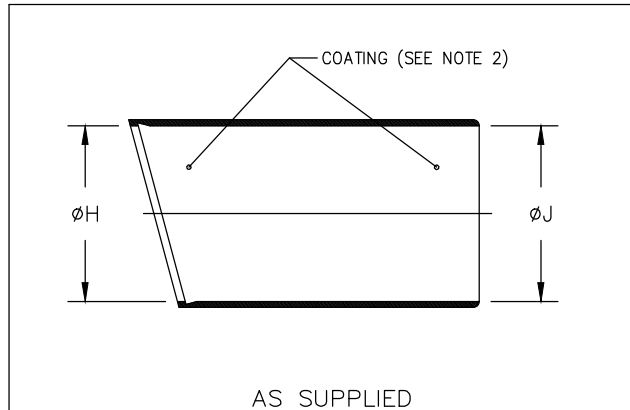


TABLE OF DIMENSIONS

PART NUMBER	H			J				P	R	S	T	U	JO	W	K	L
	Min -100 a	Min a	Max b	Min -100 a	Min -3,-4,-25 a	Min -12 a	Max b	±10% b	Ref b	Ref b	Ref b	Ref b	±10% b	±20% b	±10% b	±10% b
222D121	<u>24,0</u> [.94]	<u>23,4</u> [.92]	<u>10,4</u> [.41]	<u>14,0</u> [.55]	<u>23,4</u> [.92]	<u>12,4</u> [.49]	<u>5,6</u> [.22]	<u>21,3</u> [.84]	<u>22,6</u> [.89]	<u>16,5</u> [.65]	<u>3,0</u> [.12]	<u>1,0</u> [.04]	<u>5,8</u> [.23]	<u>1,3</u> [.05]	<u>15,2</u> [.60]	<u>14,7</u> [.58]
222D132	<u>30,0</u> [1.18]	<u>28,4</u> [1.12]	<u>14,2</u> [.56]	<u>15,0</u> [.59]	<u>28,4</u> [1.12]	<u>14,7</u> [.58]	<u>6,6</u> [.26]	<u>33,8</u> [1.33]	<u>27,2</u> [1.07]	<u>19,3</u> [.76]	<u>3,0</u> [.12]	<u>1,0</u> [.04]	<u>15,5</u> [.65]	<u>1,5</u> [.06]	<u>19,1</u> [.75]	<u>24,9</u> [.98]
222D142	<u>31,0</u> [1.22]	<u>31,0</u> [1.22]	<u>17,8</u> [.70]	<u>18,0</u> [.71]	<u>31,0</u> [1.22]	<u>16,0</u> [.63]	<u>7,1</u> [.28]	<u>36,6</u> [1.44]	<u>31,0</u> [1.22]	<u>21,1</u> [.83]	<u>3,0</u> [.12]	<u>1,0</u> [.04]	<u>12,7</u> [.50]	<u>1,8</u> [.07]	<u>19,1</u> [.75]	<u>24,9</u> [.98]
222D152	<u>36,0</u> [1.42]	<u>36,0</u> [1.42]	<u>22,4</u> [.88]	<u>21,0</u> [.83]	<u>36,0</u> [1.42]	<u>18,5</u> [.73]	<u>8,4</u> [.33]	<u>43,7</u> [1.72]	<u>35,1</u> [1.38]	<u>22,9</u> [.90]	<u>3,0</u> [.12]	<u>1,0</u> [.04]	<u>14,5</u> [.57]	<u>1,8</u> [.07]	<u>19,1</u> [.75]	<u>30,0</u> [1.18]
222D163	<u>43,0</u> [1.69]	<u>42,7</u> [1.68]	<u>28,2</u> [1.11]	<u>25,0</u> [.98]	<u>42,7</u> [1.68]	<u>22,1</u> [.87]	<u>9,9</u> [.39]	<u>53,6</u> [2.11]	<u>43,9</u> [1.73]	<u>29,0</u> [1.14]	<u>3,0</u> [.12]	<u>1,7</u> [.07]	<u>17,5</u> [.69]	<u>2,0</u> [.08]	<u>19,3</u> [.76]	<u>33,0</u> [1.30]
222D174	<u>52,0</u> [2.05]	<u>51,8</u> [2.04]	<u>35,1</u> [1.38]	<u>39,0</u> [1.54]	<u>51,8</u> [2.04]	<u>35,3</u> [1.39]	<u>15,7</u> [.62]	<u>78,0</u> [3.07]	<u>52,8</u> [2.08]	<u>33,5</u> [1.32]	<u>3,0</u> [.12]	<u>1,7</u> [.07]	<u>33,5</u> [1.32]	<u>3,3</u> [.13]	<u>25,4</u> [1.00]	<u>53,8</u> [2.12]
222D185	<u>66,0</u> [2.60]	<u>66,0</u> [2.60]	<u>44,5</u> [1.75]	<u>42,0</u> [1.65]	<u>66,0</u> [2.60]	<u>45,7</u> [1.80]	<u>20,3</u> [.80]	<u>97,5</u> [3.84]	<u>66,0</u> [2.60]	<u>41,7</u> [1.64]	<u>3,0</u> [.12]	<u>2,0</u> [.08]	<u>40,1</u> [1.58]	<u>3,8</u> [.15]	<u>25,4</u> [1.00]	<u>71,1</u> [2.80]
222D196	<u>81,8</u> [3.22]	<u>81,8</u> [3.22]	<u>60,5</u> [2.38]	<u>57,2</u> [2.25]	<u>81,8</u> [3.22]	<u>57,2</u> [2.25]	<u>25,4</u> [1.00]	<u>117,9</u> [4.64]	<u>83,8</u> [3.30]	<u>51,6</u> [2.03]	<u>3,0</u> [.12]	<u>2,0</u> [.08]	<u>38,1</u> [1.50]	<u>4,1</u> [.16]	<u>25,4</u> [1.00]	<u>80,0</u> [3.15]

DIMENSIONS:

mm [INCHES]

DWN

PRAVEEN N T

25JAN2019

MATERIAL

SEE SHEET 2

FINISH

-

TOLERANCES UNLESS OTHERWISE SPECIFIED:

CHK

N NAGAR

25JAN2019

APVD

M TAYLOR

25JAN2019

PRODUCT SPEC

-

APPLICATION SPEC

-

WEIGHT

-

NAME

BOOT, 90 DEGREE,
WITH LIP

SIZE

A4

CAGE CODE

00779

DRAWING NO

C-

222D121-XX-0THRU196-XX-0

RESTRICTED TO

-

CUSTOMER DRAWING

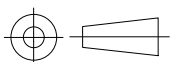
SCALE

DNS

SHEET

1 OF 2

REV S



REVISIONS

P	LTR	DESCRIPTION	DATE	DWN	APVD
	—	SEE SHEET 1	—	—	—

COMPATABILITY CHART

MATERIAL DASH NO.	MATERIAL DESCRIPTION	RT SPEC	COATING SLASH NO.	COATING S NO.
-3	Polyolefin, Semi-rigid	RT-301	/42;/86;/180	S1017;S1048;S1030
-4	Polyolefin, Flexible	RT-1304	/42;/86;/180	S1017;S1048;S1030
-12	Fluoroelastomer, Flexible	RT-1312	N/A	N/A
-25	Elastomer, Fluid Resistant	RW-2070	/42;/86;/225	S1017;S1048;S1206
-100	Polyolefin, Semi-flexible ZEROHAL	RW-2082	/86;/180	S1048;S1030

ORDERING INFORMATION

Base part number _____

Material dash number _____
(See Compatability Chart)

Modification number _____

Adhesive slash number _____
(If necessary, see Compatability Chart)

Color designator _____

NOTES

- Dimensions appearing in table are as follows:
 - a - As Supplied
 - b - After Unrestricted Recovery
- Coating is optional. As supplied dimensions appearing in table are for uncoated parts. When coating is added, entry diameters will be reduced by 1.5mm[.06] max.
- Molding ports are optional. When -00 modification number is specified molding ports will be located as shown.
- 8 material is not available on 222D185 and 222D196.


RELEASED FOR PUBLICATION

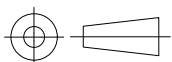
- , 25JAN2019

THIS DRAWING IS UNPUBLISHED.

ALL RIGHTS RESERVED.

© COPYRIGHT - TE Connectivity Ltd.

DIMENSIONS: mm [INCHES]	DWN PRAVEEN N T	25JAN2019	MATERIAL —	FINISH —				
	CHK N NAGAR	25JAN2019	 TE Connectivity Ltd.					
TOLERANCES UNLESS OTHERWISE SPECIFIED:	APVD M TAYLOR	25JAN2019			NAME BOOT, 90 DEGREE, WITH LIP			
	PRODUCT SPEC —	SIZE A4		CAGE CODE 00779	DRAWING NO C- 222D121-XX-0THRU196-XX-0	RESTRICTED TO —		
0 PLC ± — 1 PLC ± — 2 PLC ± — 3 PLC ± — 4 PLC ± — ANGLES ± —	APPLICATION SPEC —	WEIGHT		CUSTOMER DRAWING		SCALE DNS	SHEET 2 of 2	REV S



Mouser Electronics

Authorized Distributor

Click to View Pricing, Inventory, Delivery & Lifecycle Information:

[TE Connectivity:](#)

[222D142-3/86-0](#)