

- 1

ELECTRICAL ENGAGEMENT POINT
- 2

AS SHOWN
- 3

SAME AS -2 EXCEPT:
COLOR CODE PER DETAIL Z

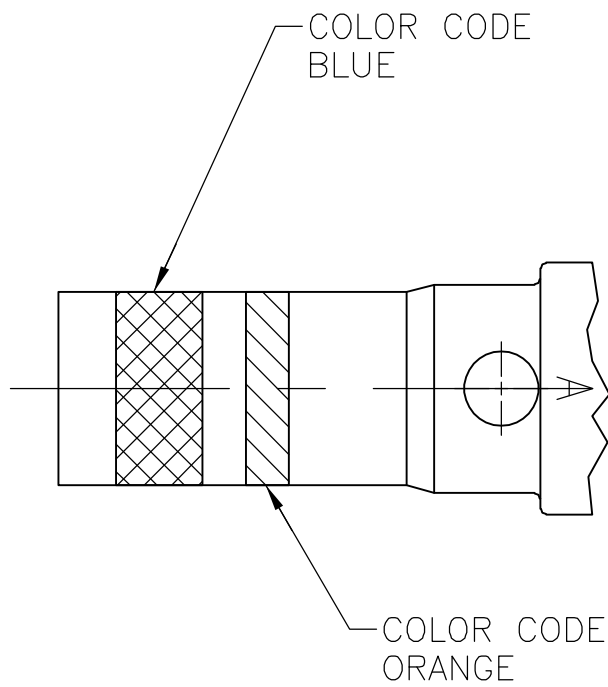
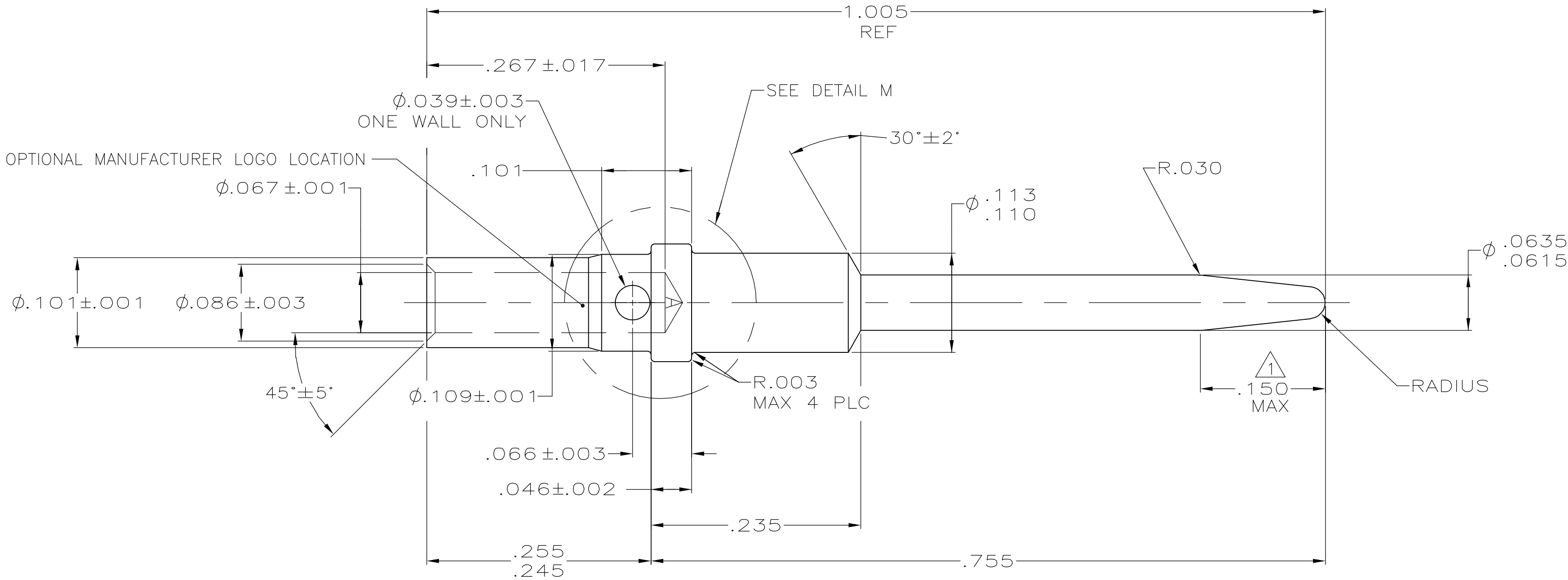
LOC	DIST	REVISIONS				
DF	A0	P	LTR	DESCRIPTION	DATE	APVD
		F		REV PER EC 0H14-0154-04	24JAN06	TK CT

D

C


B

A



DETAIL Z
(APPLIES TO -3 ONLY)

OBSOLETE	208268-5
<div>3</div>	208268-3
<div>2</div>	208268-2
DESCRIPTION	PART NUMBER

THIS DRAWING IS A CONTROLLED DOCUMENT.		DWN C.C.THOMAS 8-20-04		tyco Electronics Tyco Electronics Corporation Harrisburg, PA 17105-3608													
DIMENSIONS: INCHES		CHK S.GLATFELTER 8-20-04															
		TOLERANCES UNLESS OTHERWISE SPECIFIED:		APVD S.GLATFELTER 8-20-04		NAME PIN CONTACT, SIZE 16 ARINC 600 TYPE											
				PRODUCT SPEC													
				APPLICATION SPEC													
		—		SIZE		CAGE CODE		DRAWING NO		RESTRICTED TO							
MATERIAL COPPER ALLOY		FINISH GOLD PER ASTM-B-488 OVER NICKEL PER QQ-N-290		WEIGHT —		A2		00779		C-208268		—					
CUSTOMER DRAWING						SCALE		10:1		SHEET		1 of 1		REV		F	

208268

B

A

Mouser Electronics

Authorized Distributor

Click to View Pricing, Inventory, Delivery & Lifecycle Information:

[TE Connectivity:](#)

[208268-3](#)