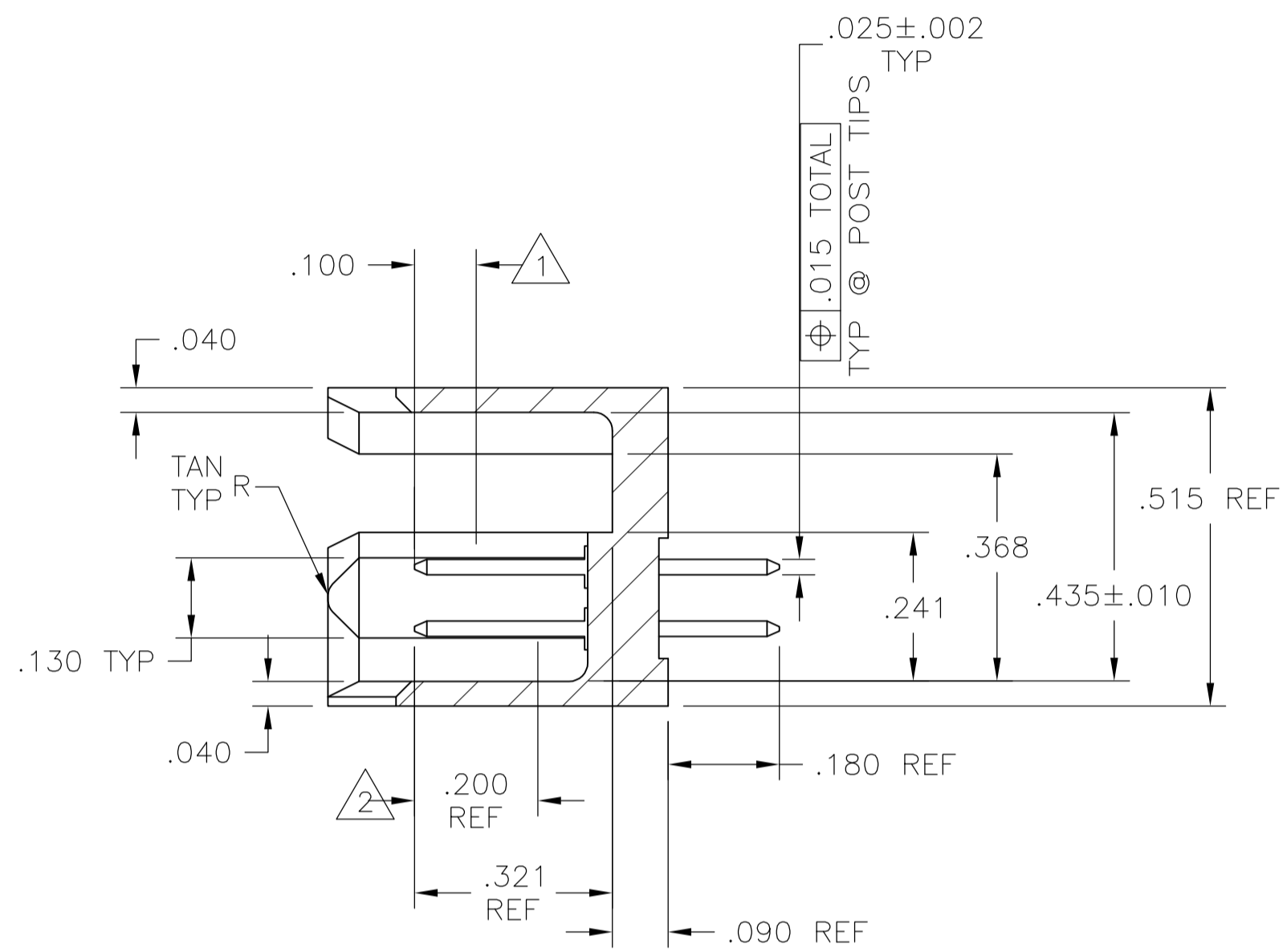
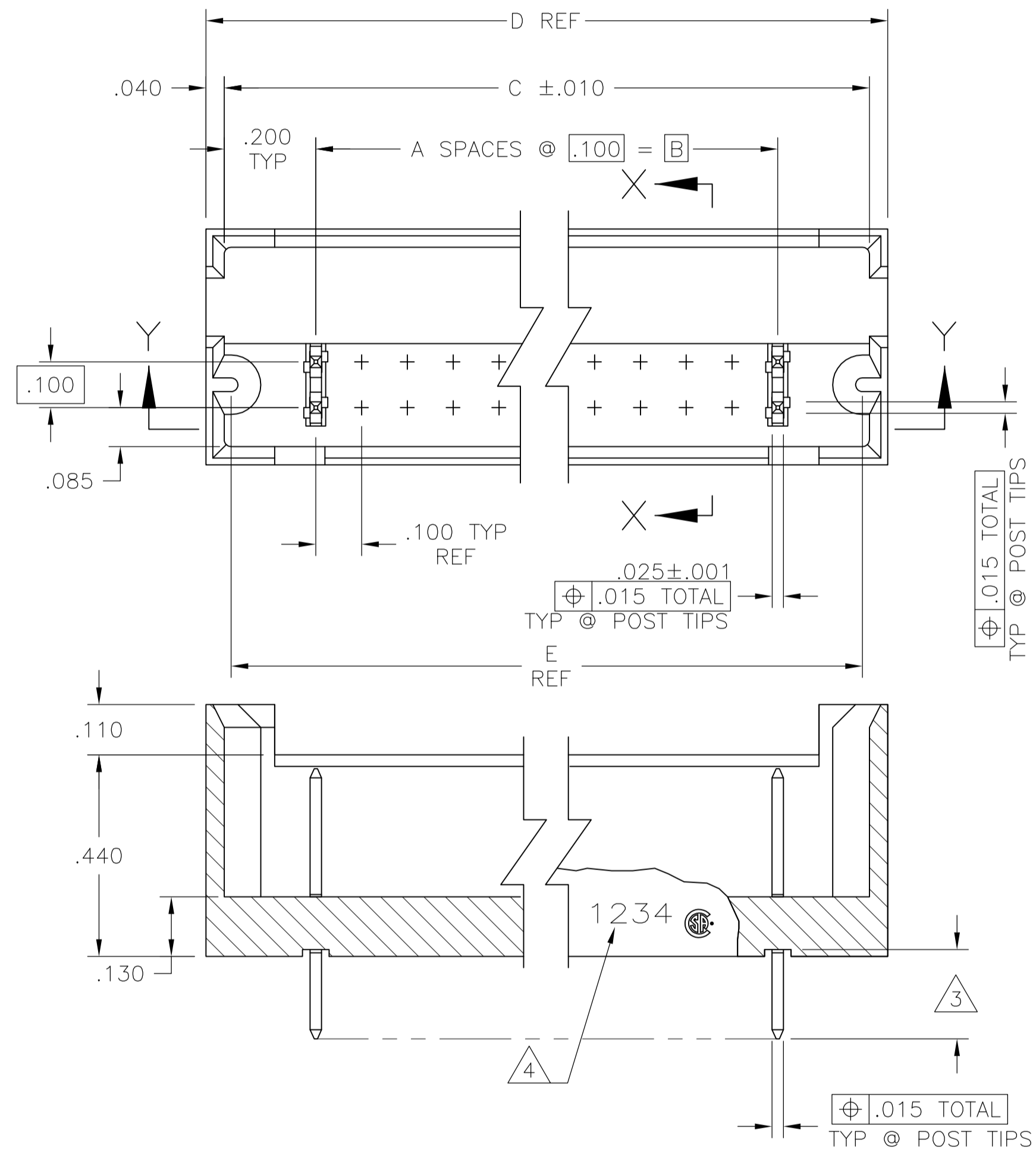

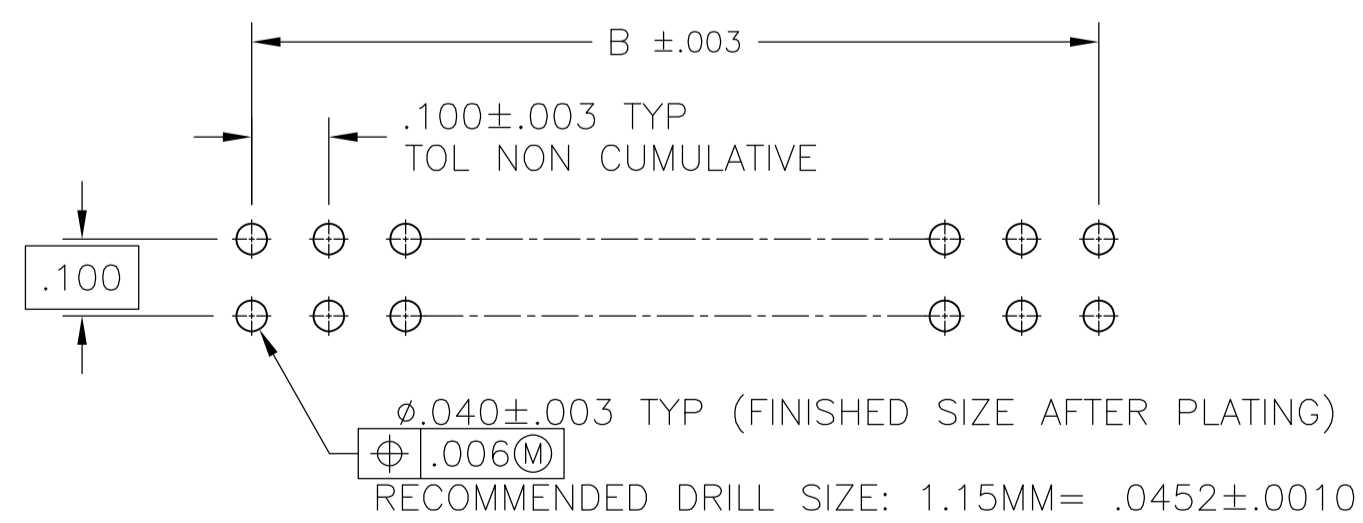


LOC	DIST	REVISIONS					
		P	LTR	DESCRIPTION	DATE	DWN	APVD
			L5	REVISED PER ECO-13-015097	25SEP2013	KH	JO



SECTION X-X

- | | |
|---|--|
| 1 | POINT OF MEASUREMENT FOR PLATING THICKNESS. |
| 2 | FINISH OVER INDICATED AREA: .000030 GOLD OVER .000050 NICKEL. |
| 3 | FINISH OVER INDICATED AREA: .000100--.000200
BRIGHT TIN LEAD OVER .000050 NICKEL. |
| 4 | RECESSED DATE CODE AND  LOGO. |
| 5 | OBSOLETE PART NUMBER. |
| 6 | PRELIMINARY PART - NOT RELEASED FOR PRODUCTION |
| 7 | FINISH OVER INDICATED AREA: .000100--.000200
MATTE TIN OVER .000050 NICKEL. |
| 8 | ROHS 2002/95/EC COMPLIANT |
| 9 | OBSOLETE PARTS: OBSOLETE CIS STREAMLINING PER D.RENAUD/D.SINISI |



RECOMMENDED HOLE SIZE

<div>9</div>	<div>OBsolete</div>	<div>5</div>	1.570	1.680	1.600	1.200	12	26	<div>8</div>	7-102692-9
		<div>5</div>	8.270	8.380	8.300	7.900	79	160	<div>8</div>	7-102692-8
		<div>5</div>	4.970	5.080	5.000	4.600	46	94	<div>8</div>	7-102692-7
		<div>5</div>	2.470	2.580	2.500	2.100	21	44	<div>8</div>	7-102692-6
		<div>5</div>	.970	1.080	1.000	.600	6	14	<div>8</div>	7-102692-5
		<div>5</div>	9.270	9.380	9.300	8.900	89	180	<div>8</div>	7-102692-4
		<div>5</div>	7.670	7.780	7.700	7.300	73	148	<div>8</div>	7-102692-3
		<div>5</div>	6.670	6.780	6.700	6.300	63	128	<div>8</div>	7-102692-2
<div>9</div>	<div>OBsolete</div>	<div>5</div>	7.270	7.380	7.300	6.900	69	140	<div>8</div>	7-102697-1
		<div>5</div>	6.770	6.880	6.800	6.400	64	130	<div>8</div>	7-102692-0
		<div>5</div>	4.570	4.680	4.600	4.200	42	86	<div>8</div>	6-102692-9
		<div>5</div>	3.870	3.980	3.900	3.500	35	72	<div>8</div>	6-102692-8
		<div>5</div>	1.770	1.880	1.800	1.400	14	30	<div>8</div>	6-102692-7
		<div>5</div>	1.270	1.380	1.300	.900	9	20	<div>8</div>	6-102692-6
		<div>5</div>	1.070	1.180	1.100	.700	7	16	<div>8</div>	6-102692-5
		<div>5</div>	3.770	3.880	3.800	3.400	34	70	<div>8</div>	6-102692-4
<div>9</div>	<div>OBsolete</div>	<div>2</div> <div>7</div>	2.270	2.380	2.300	1.900	19	40	<div>8</div>	6-102692-3
		<div>2</div> <div>7</div>	4.770	4.880	4.800	4.400	44	90	<div>8</div>	6-102692-2
		<div>2</div> <div>7</div>	10.270	10.380	10.300	9.900	99	200	<div>8</div>	6-102692-1
		<div>2</div> <div>7</div>	5.770	5.880	5.800	5.400	54	110	<div>8</div>	6-102692-0
		<div>2</div> <div>7</div>	6.270	6.380	6.300	5.900	59	120	<div>8</div>	5-102692-9
		<div>2</div> <div>7</div>	5.270	5.380	5.300	4.900	49	100	<div>8</div>	5-102692-8
		<div>2</div> <div>7</div>	5.070	5.180	5.100	4.700	47	96	<div>8</div>	5-102692-7
		<div>2</div> <div>7</div>	4.270	4.380	4.300	3.900	39	80	<div>8</div>	5-102692-6
<div>9</div>	<div>OBsolete</div>	<div>5</div>	3.270	3.380	3.300	2.900	29	60	<div>8</div>	5-102692-5
		<div>5</div>	2.770	2.880	2.800	2.400	24	50	<div>8</div>	5-102692-4
		<div>5</div>	2.070	2.180	2.100	1.700	17	36	<div>8</div>	5-102692-3
		<div>5</div>	1.470	1.580	1.500	1.100	11	24	<div>8</div>	5-102692-2
		<div>5</div>	.870	.980	.900	.500	5	12	<div>8</div>	5-102692-1
		<div>5</div>	1.570	1.680	1.600	1.200	12	26		2-102692-9
		<div>5</div>	8.270	8.380	8.300	7.900	79	160		2-102692-8
		<div>5</div>	4.970	5.080	5.000	4.600	46	94		2-102692-7
<div>9</div>	<div>OBsolete</div>	<div>5</div>	2.470	2.580	2.500	2.100	21	44		2-102692-6
		<div>5</div>	.970	1.080	1.000	.600	6	14		2-102692-5
		<div>5</div>	9.270	9.380	9.300	8.900	89	180		2-102692-4
		<div>5</div>	7.670	7.780	7.700	7.300	73	148		2-102692-3
		<div>5</div>	6.670	6.780	6.700	6.300	63	128		2-102692-2
		<div>5</div>	7.270	7.380	7.300	6.900	69	140		2-102692-1
		<div>5</div>	6.770	6.880	6.800	6.400	64	130		2-102692-0
		<div>5</div>	4.570	4.680	4.600	4.200	42	86		1-102692-9
<div>9</div>	<div>OBsolete</div>	<div>5</div>	3.870	3.980	3.900	3.500	35	72		1-102692-8
		<div>5</div>	1.770	1.880	1.800	1.400	14	30		1-102692-7
		<div>5</div>	1.270	1.380	1.300	.900	9	20		1-102692-6
		<div>2</div> <div>3</div>	1.070	1.180	1.100	.700	7	16		1-102692-5
		<div>2</div> <div>3</div>	3.770	3.880	3.800	3.400	34	70		1-102692-4
		<div>2</div> <div>3</div>	2.270	2.380	2.300	1.900	19	40		1-102692-3
		<div>2</div> <div>3</div>	4.770	4.880	4.800	4.400	44	90		1-102692-2
		<div>2</div> <div>3</div>	10.270	10.380	10.300	9.900	99	200		1-102692-1
<div>9</div>	<div>OBsolete</div>	<div>5</div>	5.770	5.880	5.800	5.400	54	110		1-102692-0
		<div>5</div>	6.270	6.380	6.300	5.900	59	120		102692-9
		<div>5</div>	5.270	5.380	5.300	4.900	49	100		102692-8
		<div>5</div>	5.070	5.180	5.100	4.700	47	96		102692-7
		<div>5</div>	4.270	4.380	4.300	3.900	39	80		102692-6
		<div>5</div>	3.270	3.380	3.300	2.900	29	60		102692-5
		<div>5</div>	2.770	2.880	2.800	2.400	24	50		102692-4
		<div>5</div>	2.070	2.180	2.100	1.700	17	36		102692-3
<div>9</div>	<div>OBsolete</div>	<div>5</div>	1.470	1.580	1.500	1.100	11	24		102692-2
		<div>5</div>	.870	.980	.900	.500	5	12		102692-1
			E	D	C ± .010	B	A	NO. OF POSN		PART NUMBER

Mouser Electronics

Authorized Distributor

Click to View Pricing, Inventory, Delivery & Lifecycle Information:

[TE Connectivity:](#)

[1-102692-1](#)